



STATUS VERIFIED UNCLASSIFIED
David T. Eulink 9/3/81
 DATE

VIA WASH DC NR S-155 1915257

402685

FM DMA HO LEEHEY SFOO

VIA LOSALAMOS NMEX NR S-227 1907432

Reviewers	Class.	Date
<i>J. M. Saporiti</i>	<i>U</i>	
<i>J. L. Cucciaro</i>	<i>U</i>	

DE URPUJ 11B

P 190430Z ZMJ

FM CJTF SEVEN ENIWETOK MI

TO DDFJA/CHAIRMAN AEC WASH DC/VIA LOS ALAMOS NMEX

ZEN/COFS USA WASH DC

INFO ZEN/CNO WASH DC

ZEN/COFS USA WASH DC

BHPB/CINCPACFLT PEARL HARBOR TH

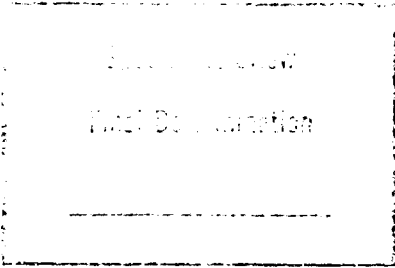
ZEN/CJTF SEVEN REAR WASH DC

DA GRNC

000 LTR 9/18/80
J. L. Cucciaro
 Date
J. L. Cucciaro 5-27-80

BEST COPY AVAILABLE

/S E C R E T/ REPT AS OF ONE EIGHT ZERO ZERO ZERO ONE ZEBRA FOLS CLN
 MEAN LEUCOCYTE COUNT RONGERIK AMERICANS APPROACHING THAT OF KUJALEIN
 AMERICAN CONTROL GROUP PD MEAN PLATELET COUNT LEVELING OFF ABOUT TWO
 ZERO ZERO THOUSAND WITH CONTROL PLATELET COUNT ABOUT TWO THREE EIGHT
 THOUSAND PD MINOR SHIN LESIONS OBSERVED IN AMERICANS DISAPPEARING PD
 NEW SUBJ PD RONGELAP GROUP SHOWING SOME DESQUAMATION SOLES OF FEET PD
 IN GENERAL SHIN LESIONS COMPLETELY HEALED WITH EXCEPTION PARTIAL AND
 IMPERFECT REPIGMENTATION AND ONE EAR LESION COVERED WITH DRY ESCHAR
 THAT MAY BE ATTACHED TO AURICULAR CARTILAGE PD ULTIMATE OUTCOME THIS
 LESION QUESTIONABLE PD MEAN LEUCOCYTE COUNT INCREASE ABOUT EIGHT ZERO

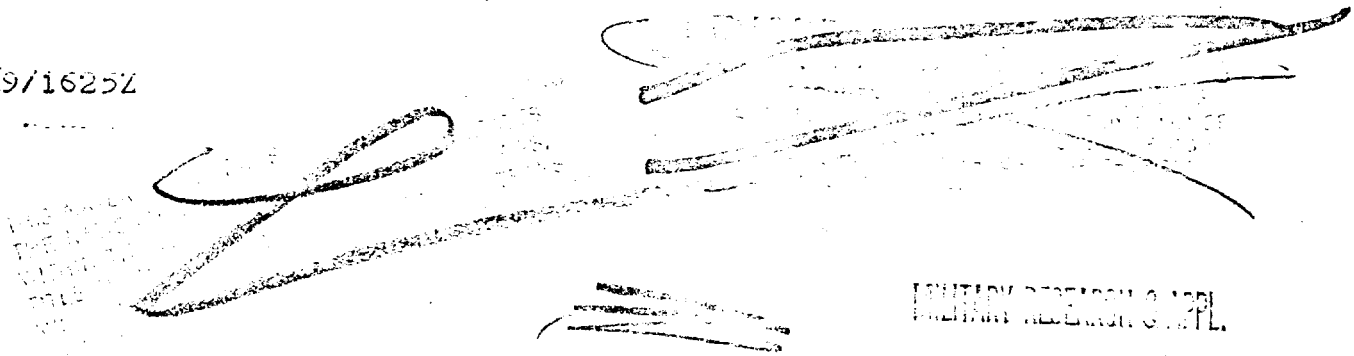


PAGE TWO UHPJC 11B

ZERO CELLS PD ONE COUNT TWO FOUR ZERO ZERO AND ONE TWO SEVEN FIVE ZERO
PD MEAN PLATELET COUNT TWO THREE TWO THOUSAND COMPARED TO MAJURO CONTROL
GROUP OF THREE TWO NINE THOUSAND PD WITH EXCEPTION OF UNKNOWN EFFECT
INTERNAL DEPOSITION ON LATE EFFECTS EXTERNAL WHOLE BODY RADIATION
PROGNOSIS FOR IMMEDIATE FUTURE MONTHS LOOKS FAVORABLE

END OF MSG

1971625Z



MILITARY RESEARCH & DEVL