

Enclosure 31

List of Addressees Contacted for Nuclear Debris Materials

1. DOD

Air Force Cambridge Research Center

410459

Naval Research Laboratory

Nuclear Defense Laboratory

AFTAC, Headquarters & Air Force Sources

2. AEC

Argonne National Laboratory

Health and Safety Laboratory NYO
Lawrence Radiation Laboratory

Los Alamos Scientific Laboratory

Robert A. Taft Sanitation and Engineering Center

3. Universities

Columbia (Lamont Geological Observatory)

California (UCRL) Berkeley

U.C.L.A. (Biology and Medicine) *Medicine*

Washington (Laboratory of Radiation Biology)

Hawaii (Marine Laboratory)

Scripps Institute of Oceanography

4. Other Organizations

USDA Soil Conservation Service

PHS Laboratory of Physical Biology

Sandia Corp

Tracerlab (Richmond, Calif. and Waltham, Mass.)

Woods Hole Oceanographic Institution

Isotopes, Inc.

Reynolds Electrical and Engineering Corp.

BEST COPY AVAILABLE

DOE ARCHIVES

US DOE ARCHIVES
326 US STU. OF ENERGY
RC
Collection DBM-EC FILES
Box 2703 Job# 7239
Folder U.S. Naval Biological

M-079-A

Nuclear Debris Samples From IASL

<u>Operation</u>	<u>Shot</u>	<u>Solid Sample No.</u>	<u>Liquid Sample No.</u>
Upshot Knothole	Nancy	2028L	311
	Dixie	4037	331A
Castle	Bravo	1-032L	416A-1
	Union	4-1086R	441A-1
Teapot	Wasp	1-049R	471A
	Moth	2-055R	482A
Redwing	Lacrosse	1-038R	644A
	Eric	5-053L	682A
	Flathead	7-504L 1/2	703A
	Osage	10-037R	734A
Plumbbob	Baltzmann	046R	811A
	Priscilla	501L-1	851A
	John	504RO-L	883A
	P		923A
	C	046R	1021A
Hardtack I	Cactus	503R2	1133A
	Butternut	503L-1	1151A
	Wahoo	503R-1	1173A-1
Hardtack II	Eddy	498R-1	1494A
	Quaey	504L-2	1582A
	C	504L-1	1562A
Dominic II	Little Feller II	827L 1/2	2-872A
	Little Feller I	842R-2	2943A-1

DOE ARCHIVES

NUCLEAR DEBRIS SAMPLES FROM LRL

<u>Operation</u>	<u>Shot</u>	<u>Sample No.</u>
Hardtack	Fir	502RHSB-2
	"	498 R HSB-1
	Nutmeg	501 R 1/2 HS-2
	"	496 R HS-1
	Pine	980L HT-15
	"	979 R HT-11
	Poplar	981R 1/2 HT-15
	"	496 R HT-2
Redwing	Redwood	977R H-T-11
	"	498R HT-3
	Apache	504R 1/2
	"	502L
	I	043R
	"	038R
	M	502 R1/2
	"	500 R1/2
Dominic	TEWA	501 R 1/2A
	"	046 R
	A	PS #1
	Bighorn	AC 982
	"	A/C 976,R1,R2
	E	lx, 2x
	Pamlico	Pot 3A
	"	Pot 6

enclosure 1

~~TAMU~~ NRDL INVENTORY OF NUCLEAR DEBRIS SAMPLES.

Operation	SHOT	SAMPLE TYPE AND APPROXIMATE NO. of SAMPLES AMOUNT	PREDOMINANT RADIONUCLIDES FOUND by GAMMA-RAY SPEC-ROMETRY (1964)
TRINITY 1945	—	FUSED ROCK 1	Cs ¹³⁷ , Co ⁶⁰ , Eu ^{152,154}
CROSSROAD 1946	BAKER	BLACK SPHERES ABOUT 20 gm	Cs ¹³⁷ , Eu ^{152,154}
IVY 1952	MIKE	CORAL SOIL 25 GAL	Cs ¹³⁷ , Sb ¹²⁵ , Co ⁶⁰
BUSTER-JAUGE 1951	UNCLE	CRATER SOIL 1/4 lb	Cs ¹³⁷ , Eu ^{152,154}
CASTLE 1954	BRAVO	SOIL PROFILE ABOUT 100 TUBES	Cs ¹³⁷ , Sb ¹²⁵ , Co ⁶⁰
REDWING 1956	ZUNI	CORAL AND CLOUD RESIDUE 10 gm	Cs ¹³⁷ , Sb ¹²⁵ , Co ⁶⁰ , Mn ⁵⁴
	"I"	CORAL 5 lb	Cs ¹³⁷ , Sb ¹²⁵ , Co ⁶⁰
TEAPOT 1955	—	SOIL SAMPLES 8	—
DOMINIC 1962	SWORDFISH	SEA WATER 5 gal	Ce ¹⁴⁴ , Sb ¹²⁵ , Ru ¹⁰⁶ , Mn ⁵⁴ , Co ⁶⁰
"	JOHNNY BOY	SOIL, SIEVED, 32	Ce ¹⁴⁴ , Co ⁶⁰ , Cs ¹³⁴
"	SMALL BOY	SOIL, SIEVED, 100	Ce ¹⁴⁴ , Sb ¹²⁵ , Ru ¹⁰⁶ , Cs ¹³⁷ , Mn ⁵⁴ , Co ⁶⁰
"	SEDAN	SOIL 8 AND ONE SET SIEVED SAMPLES	W ¹⁸¹ , Sb ¹²⁵ , Ru ¹⁰⁶ , Cs ¹³⁷ , Mn ⁵⁴ , Co ⁶⁰ , Zn ^{65(?)}

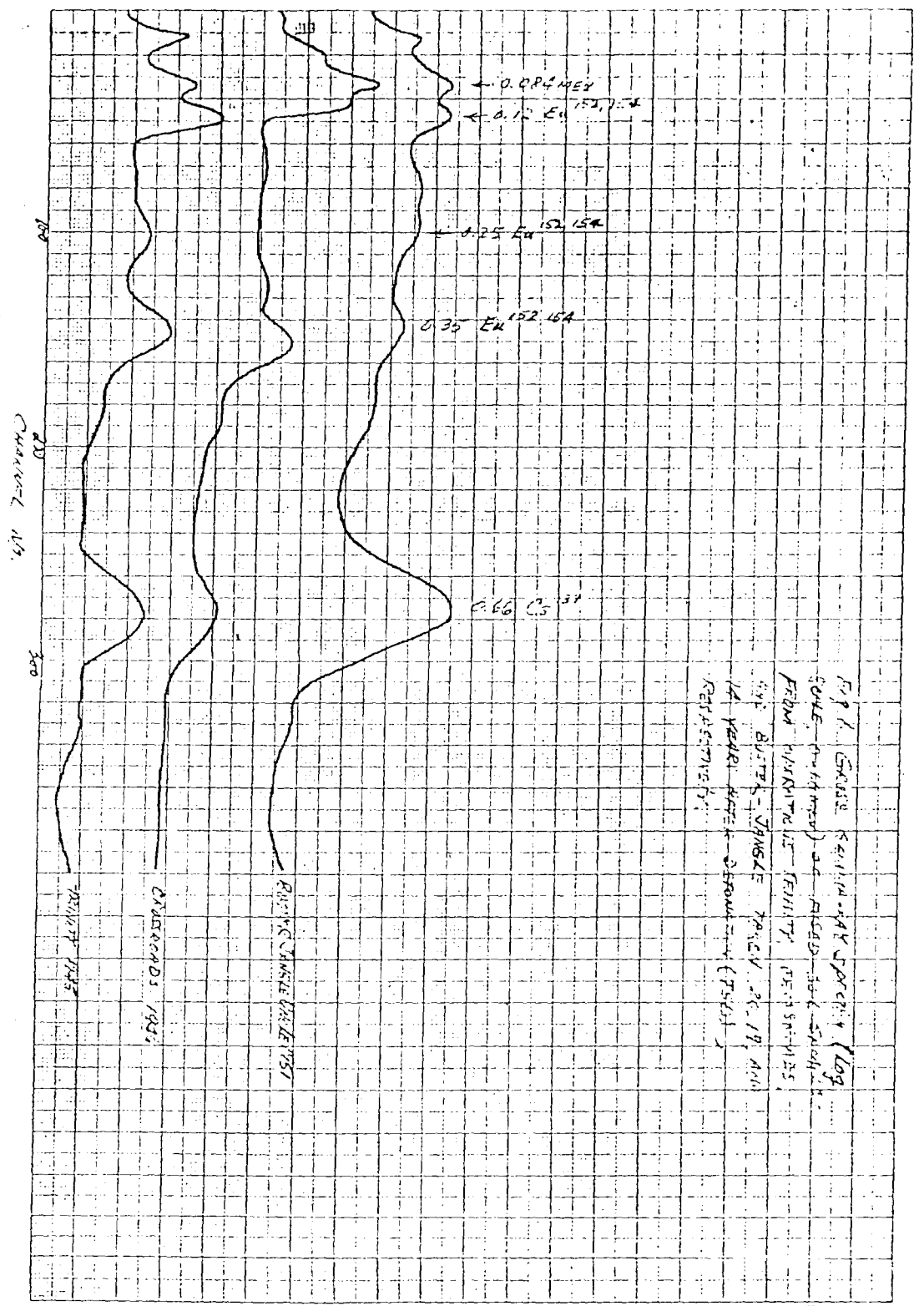
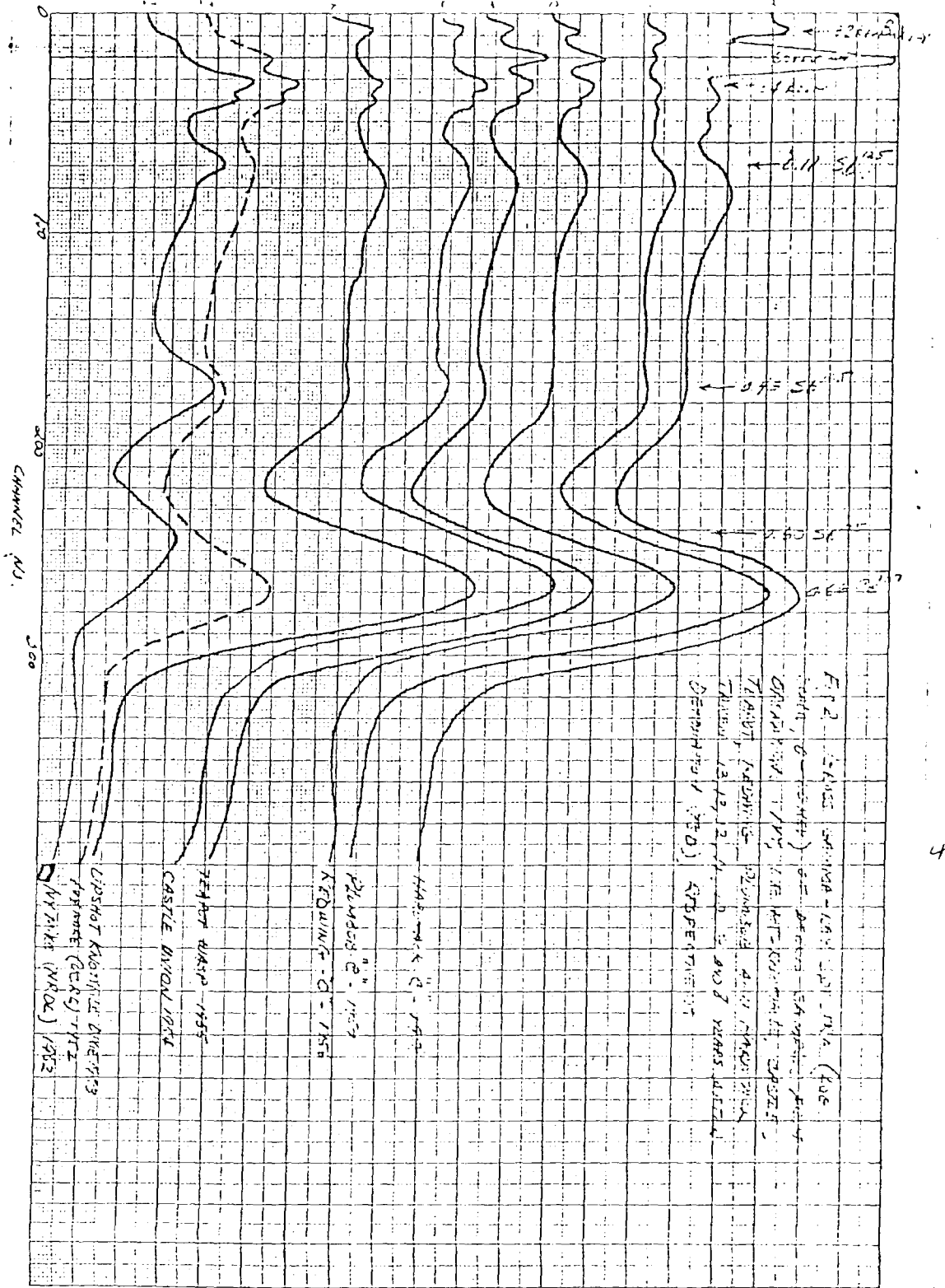


Fig. 1. Channel width vs. depth (log scale) for the 1957-58 season. Data from the 1957-58 season. The channel width is plotted against the channel depth. The data points are: (0.00, 100), (0.10, 152.15A), (0.25, 152.15A), (0.60, 31).

DOE ARCHIVES



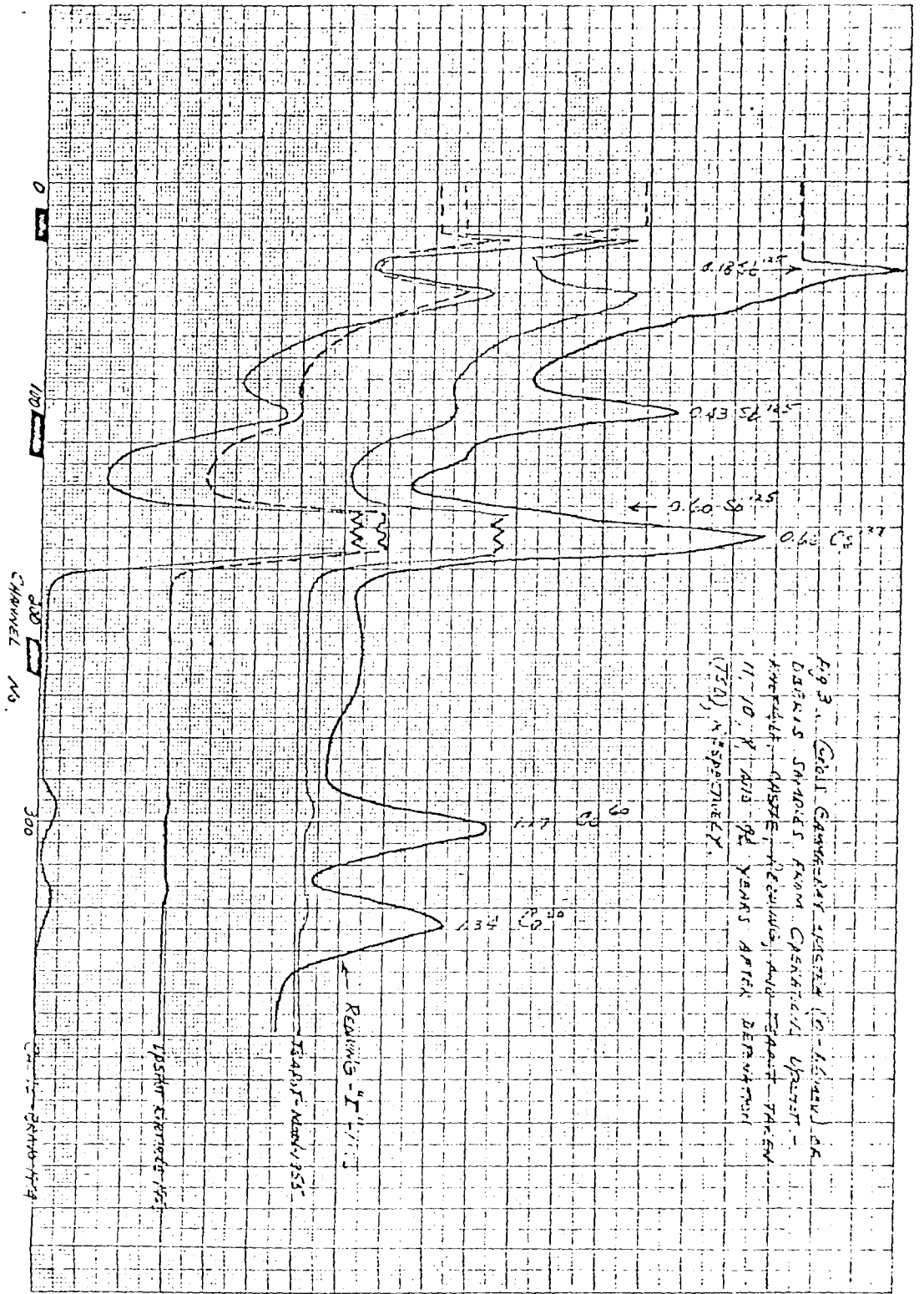
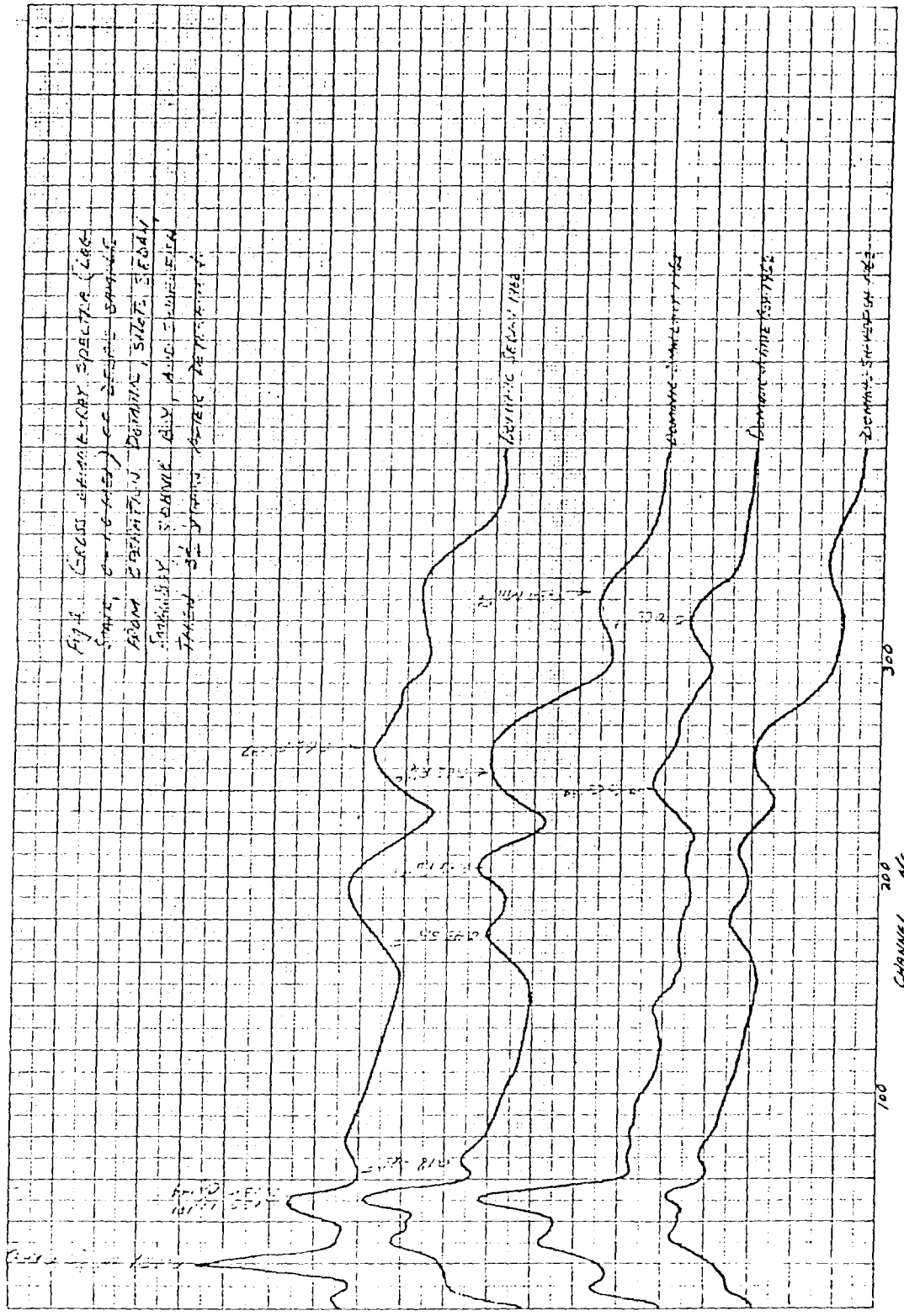


Fig. 1. CROSS-CORRELATION SPECTRA (Lag
 zero, 0.1 sec) of seismic signals
 from BENTONITE DEBRIS, SITE 2, F&W,
 SINKHOLE 3, BAYVIEW LAGOON, AND ILLINOIS
 TANKS AT VARIOUS DEPTH REPRESENTED.



CHANNEL NO.

44

Enclosure 3 1

List of Addressees Contacted for Nuclear Debris Materials

1. DOD

Air Force Cambridge Research Center

Naval Research Laboratory

Nuclear Defense Laboratory

AFTAC, Headquarters & Air Force Sources

2. AEC

Argonne National Laboratory

Health and Safety Laboratory NYO
Lawrence Radiation Laboratory

Los Alamos Scientific Laboratory

Robert A. Tart Sanitation and Engineering Center

3. Universities

Columbia (Lamont Geological Observatory)

California (UCRL) , Berkeley

U.C.L.A. (Biology and Medicine)

Washington (Laboratory of Radiation Biology)

Hawaii (Marine Laboratory)

Scripps Institute of Oceanography

4. Other Organizations

USDA Soil Conservation Service

PHS Laboratory of Physical Biology

Sandia Corp

Tracerlab (Richmond, Calif. and Waltham, Mass.)

Woods Hole Oceanographic Institution

Isotopes, Inc.

Reynolds Electrical and Engineering Corp.

US DOE ARCHIVES	326 USES ATOM ENERGY	Collection 1001-401-1023	on 7/11/81	older files - 1001-401-1023
-----------------	----------------------	--------------------------	------------	-----------------------------

DOE ARCHIVES

Nuclear Debris Samples From LASL

<u>Operation</u>	<u>Shot</u>	<u>Solid Sample No.</u>	<u>Liquid Sample No.</u>
Upshot Knothole	Nancy	2028L	311
	Dixie	4037	331A
Castle	Bravo	1-032L	416A-1
	Union	4-1086R	441A-1
Teapot	Wasp	1-049R	471A
	Moth	2-055R	482A
Redwing	Lacrosse	1-038R	644A
	Eric	5-053L	682A
	Flathead	7-504L 1/2	703A
	Osage	10-037R	734A
Plumbbob	Baltzmann	046R	811A
	Priscilla	501L-1	851A
	John	504RO-L	883A
	P		923A
	C	046R	1021A
Hardtack I	Cactus	503R2	1133A
	Butternut	503L-1	1151A
	Wahoo	503R-1	1173A-1
Hardtack II	Eddy	498R-1	1494A
	Quaey	504L-2	1582A
	C	504L-1	1562A
Dominic II	Little Feller II	827L 1/2	2-872A
	Little Feller I	842R-2	2943A-1

NUCLEAR DEBRIS SAMPLES FROM LRL

<u>Operation</u>	<u>Shot</u>	<u>Sample No.</u>
Hardtack	Fir	502RHSB-2
	"	498 R HSB-1
	Nutmeg	501 R 1/2 HS-2
	"	496 R HS-1
	Pine	980L HT-15
	"	979 R HT-11
	Poplar	981R 1/2 HT-15
	"	496 R HT-2
	Redwood	977R H-T-11
	"	498R HT-3
Redwing	Apache	504R 1/2
	"	502L
	I	043R
	"	038R
	M	502 R1/2
	"	500 R1/2
	TEWA	501 R 1/2A
	"	046 R
Dominic	A	PS #1
	Bighorn	AC 982
	"	A/C 976,R1,R2
	E	1x, 2x
	Pamlico	Pot 3A
	"	Pot 6

~~TAMU~~ NRDL INVENTORY OF NUCLEAR DEBRIS SAMPLES.

Operation	SHOT	SAMPLE TYPE AND APPROXIMATE NO. of SAMPLES AMOUNT	PREDOMINANT RADIONUCLIDES FOUND by GAMMA-RAY SPEC- ROMETRY (1964)
TRINITY 1945	—	FUSED ROCK 1	Cs ¹³⁷ , Co ⁶⁰ , Eu ^{152,154}
CROSSROAD 1946	BAKER	BLACK SPHERES ABOUT 20 gm	Cs ¹³⁷ , Eu ^{152,154}
IVY 1952	MIKE	CORAL SOIL 25 GAL	Cs ¹³⁷ , Sb ¹²⁵ , Co ⁶⁰
BUSTER-JANKE 1951	UNCLE	CRATER SOIL 1/4 lb	Cs ¹³⁷ , Eu ^{152,154}
CASTLE 1954	BRAVO	SOIL PROFILE ABOUT 100 TUBES	Cs ¹³⁷ , Sb ¹²⁵ , Co ⁶⁰
REDWING 1956	ZUNI "I"	CORAL AND CLOUD RESIDUE 10 gm CORAL 5 lb	Cs ¹³⁷ , Sb ¹²⁵ , Co ⁶⁰ , Mn ⁵⁴ Cs ¹³⁷ , Sb ¹²⁵ , Co ⁶⁰
TEAPOT 1955	-	SOIL SAMPLES 8	—
DOMINIC 1962	SWORDFISH	SEA WATER 5 gal	Ce ¹⁴⁴ , Sb ¹²⁵ , Ru ¹⁰⁶ , Mn ⁵⁴ , Co ⁶⁰
"	JOHNNY BOY	SOIL, SIEVED, 32	Ce ¹⁴⁴ , Co ⁶⁰ , Cs ¹³⁷
"	SMALLBOY	SOIL, SIEVED, 100	Ce ¹⁴⁴ , Sb ¹²⁵ , Ru ¹⁰⁶ , Cs ¹³⁷ Mn ⁵⁴ , Co ⁶⁰
"	SEDAN	SOIL 8 AND ONE SET SIEVED SAMPLES	W ¹⁸¹ , Sb ¹²⁵ , Ru ¹⁰⁶ , Cs ¹³⁷ Mn ⁵⁴ , Co ⁶⁰ , Zn ^{65(?)}

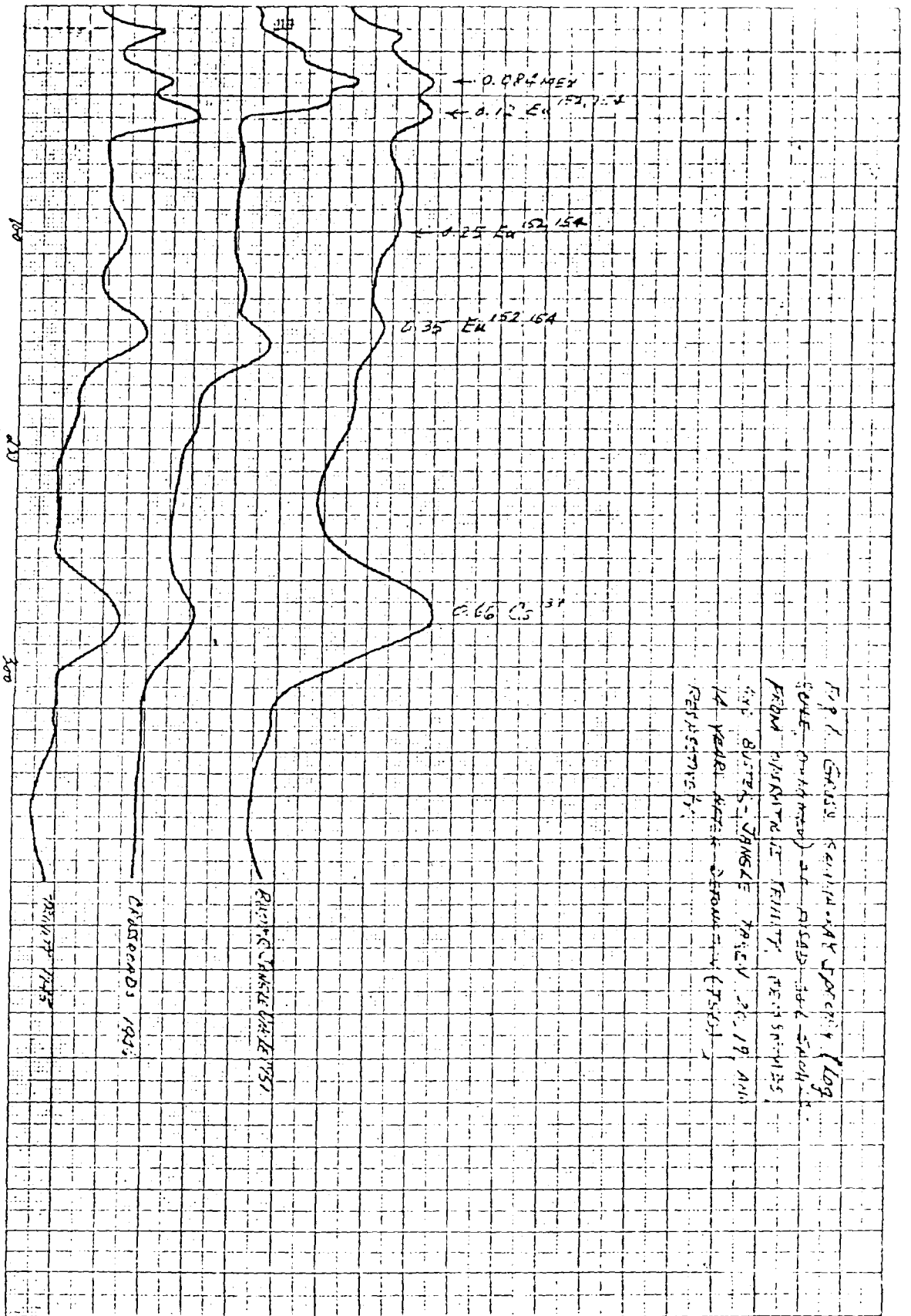
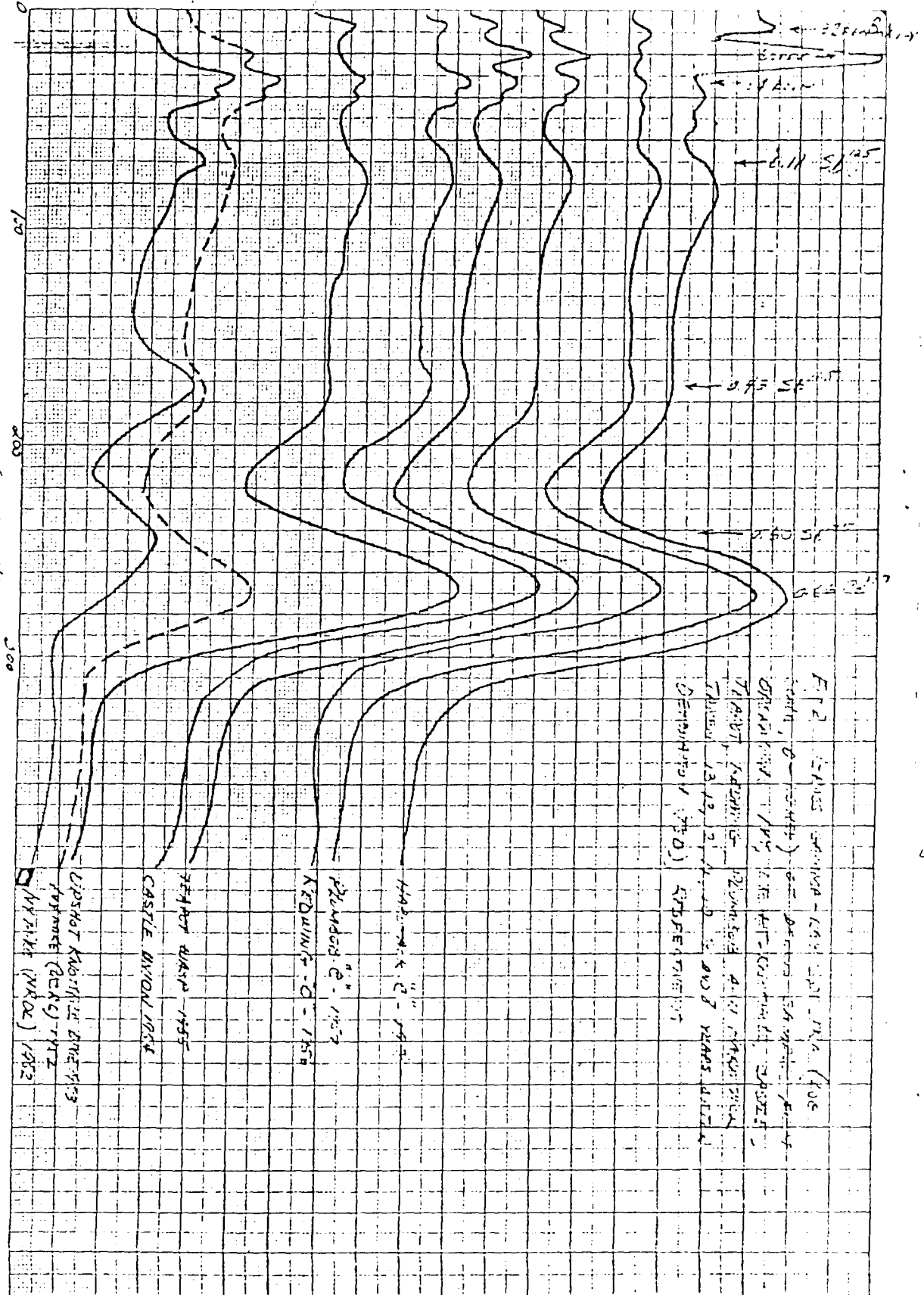


Fig. 1. GEOTECHNICAL SURVEY LOG
 (NOTE: Only part of log is shown - full log
 FROM MINISTRIE TERRE ET MINES
 DES BUREAUX-CHARGES TRAVAIL 20, 19, AN
 14, YERRE, TERRE ET MINES (T.M.),
 REVISIONS 1951)

402

DOE ARCHIVES



403

