

REPOSITORY NATIONAL ARCHIVES
PACIFIC SOUTHWEST REGION

COLLECTION RG 326 ATOMIC ENERGY COMMISSION

BOX No. 52670 (#28) A16164 326-658730

FOLDER WEATHER STATIONS

Reproduced from the holdings of the National Archives
Pacific Southwest Region

COPY

405962

H & N ROUTING

Info: Ryan *MB 12/26*
cc: Robertson
cc: Moore
cc: Generaux
cc: Sears
cc: Rohrer
cc: Poche
cc: Butler



TEE:EW:M-2506

December 23, 1957

TO WHOM IT MAY CONCERN:

BEST COPY AVAILABLE

Subject: LETTER OF INTRODUCTION AND AUTHORITY

The bearer, Mr. Thomas J. Baldwin, is the senior representative assigned by the AEC Contractor, Holmes & Narver, Inc., for a construction mission at Rongelap.

The construction mission is scheduled to be accomplished by January 18, 1958.

In addition to the specific assignment as contained in the Holmes and Narver "Letter of Instruction", date: December 23, 1957, addressed to Mr. Thomas J. Baldwin, the undersigned authorizes and limits Mr. Baldwin as follows:

1. No commitments of any kind are to be made to inhabitants of the Trust Territories.
2. Coordination will be effected only with the representatives of Trust Territory Government.
3. Maintain safety to inhabitants and Holmes and Narver employees.
4. Protect trees to the maximum. Record actual damage by type and number destroyed where unavoidable. The local magistrate should be present when trees or other property is removed to verify count of trees destroyed and other pertinent details.
5. Maintain progress, reporting via ship radio, and make emergency reports promptly.

Sincerely yours,

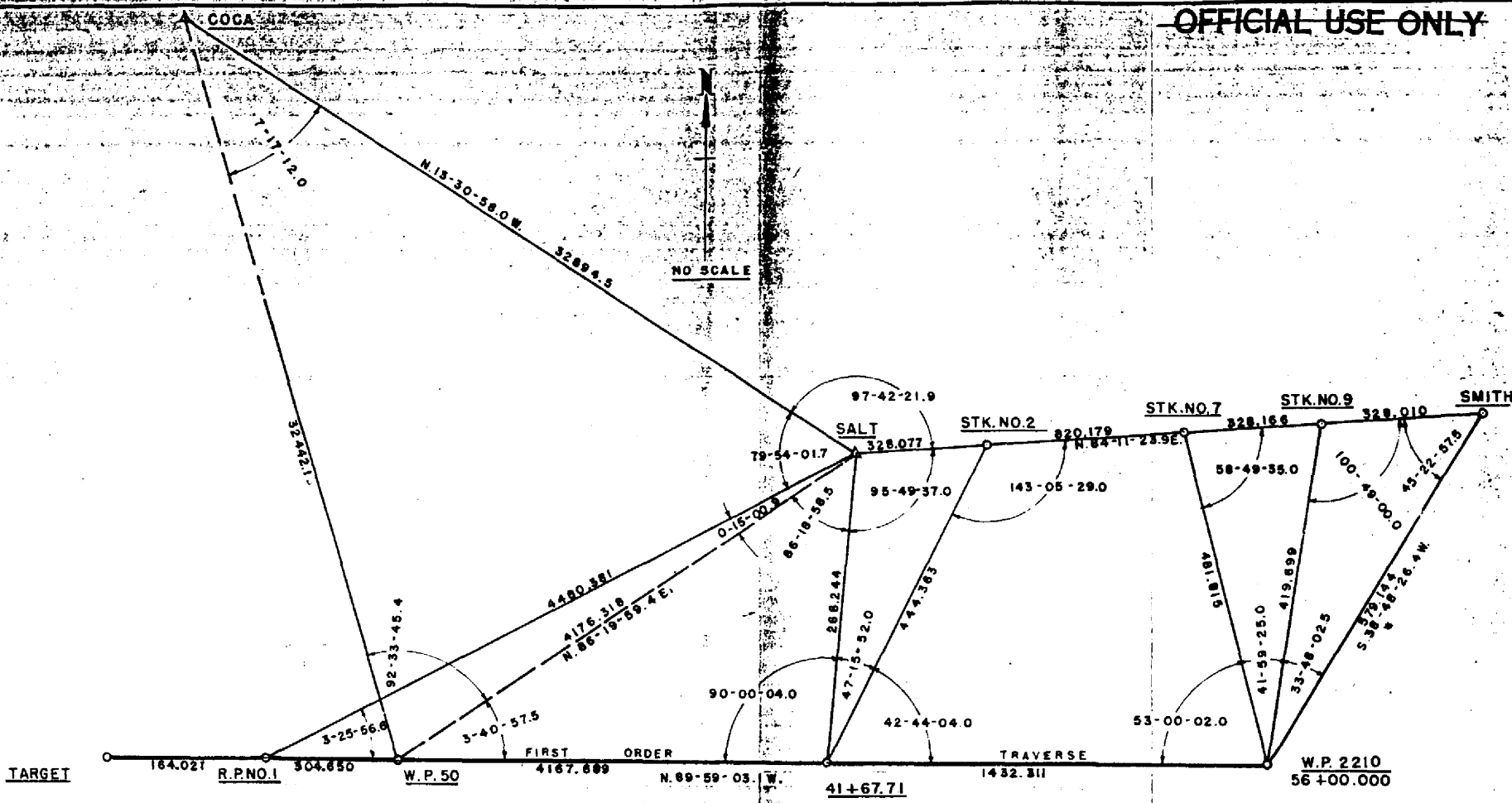
ERNEST WYNKOOP
Chief, Eniwetok Branch

cc: Pac. Opns. Div., ALO
HICOMTERPACIS, Guam
DISTAD, Marshall Islands
H&N, EPG
H&N, LosA (2)
Chrono
Central

COPY

Reproduced from the holdings of the National Archives
 and Records Administration, Pacific Southwest Region

OFFICIAL USE ONLY



STATION	PLANE COORDINATES	
	NORTH	EAST
COCA	132,405.10	106,278.70
SALT	100,421.60	113,966.80
SMITH	100,604.26	115,761.96
W.P. 2210	100,152.96	115,399.01
41+67.71	100,153.36	113,966.70
W.P. 50	100,154.50	109,799.00

DECLASSIFIED PER DOE
 LETTER DATED JULY, 15, 1994
 FROM ANTON SINISGALLI TO
 DIANE S. NIXON

THIS IS AN OFFICIAL DOCUMENT OF THE UNITED STATES.
 IT MAY NOT BE PUBLISHED, REPRODUCED, OR USED FOR
 OTHER THAN OFFICIAL PURPOSES WITHOUT THE PRIOR
 WRITTEN CONSENT OF THE UNITED STATES ATOMIC
 ENERGY COMMISSION AND IS SUBJECT TO RECALL.
 ANY VIOLATION WILL BE SUBJECT TO PUNISHMENT
 UNDER THE LAWS OF THE UNITED STATES.

LOCATION OF STATIONS
 50, - 2210

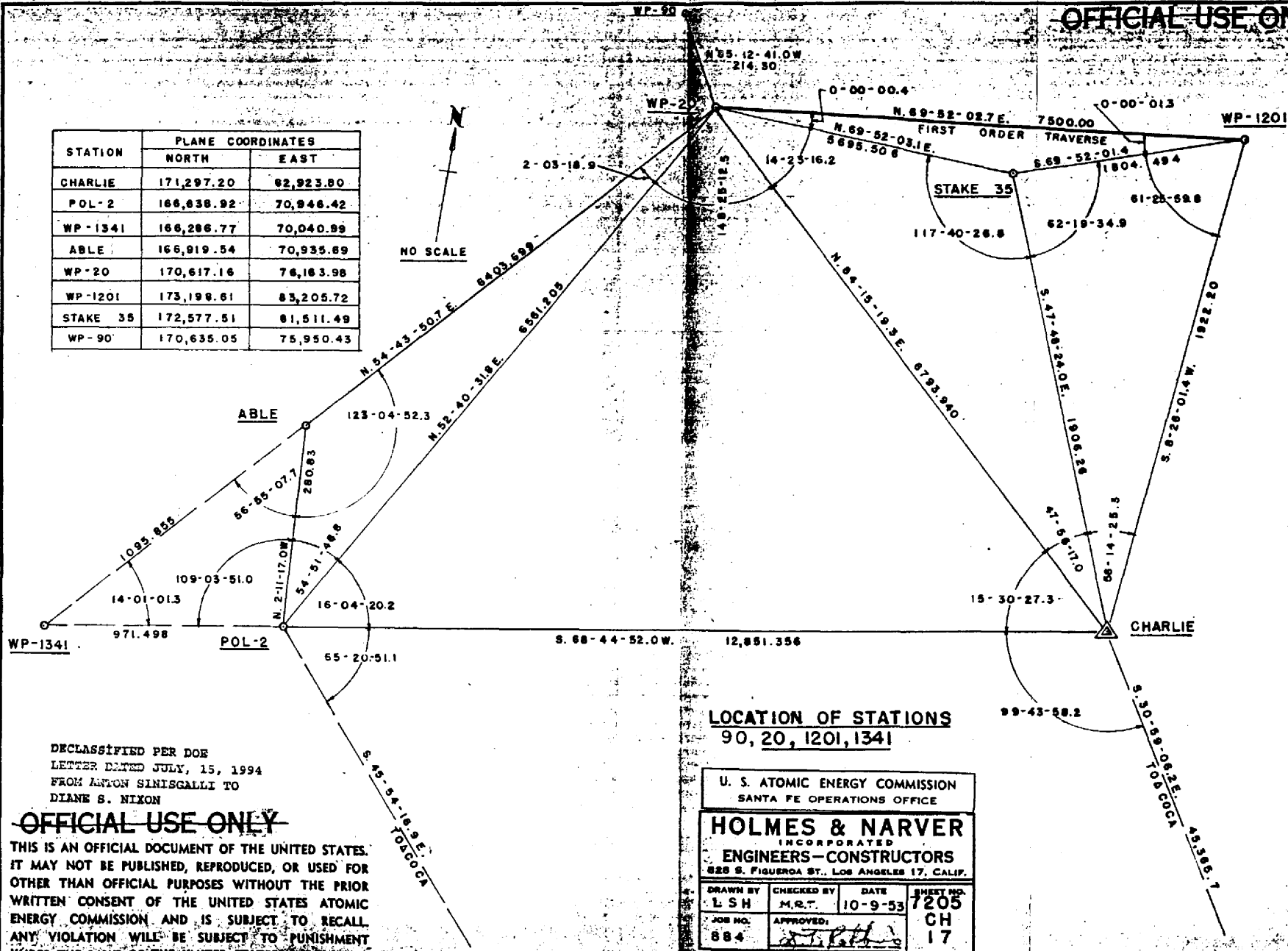
U. S. ATOMIC ENERGY COMMISSION			
SANTA FE OPERATIONS OFFICE			
HOLMES & NARVER, INC.			
ENGINEERS—CONSTRUCTORS			
828 S. FIGUEROA ST., LOS ANGELES 17, CALIF.			
DRAWN BY	CHECKED BY	DATE	SHEET NO.
L. S. H.	M. R. T.	10-26-53	7210
JOB NO.	APPROVED:		TA
884	<i>[Signature]</i>		17

OFFICIAL USE ONLY

23

OFFICIAL USE ONLY

STATION	PLANE COORDINATES	
	NORTH	EAST
CHARLIE	171,297.20	82,923.80
POL-2	166,838.92	70,946.42
WP-1341	166,286.77	70,040.99
ABLE	166,919.54	70,935.89
WP-20	170,617.16	76,163.98
WP-1201	173,198.61	83,205.72
STAKE 35	172,577.51	81,511.49
WP-90	170,635.05	75,950.43



Reproduced from the holdings of the National Archivist,
 Pacific Southwest Region.

LOCATION OF STATIONS
 90, 20, 1201, 1341

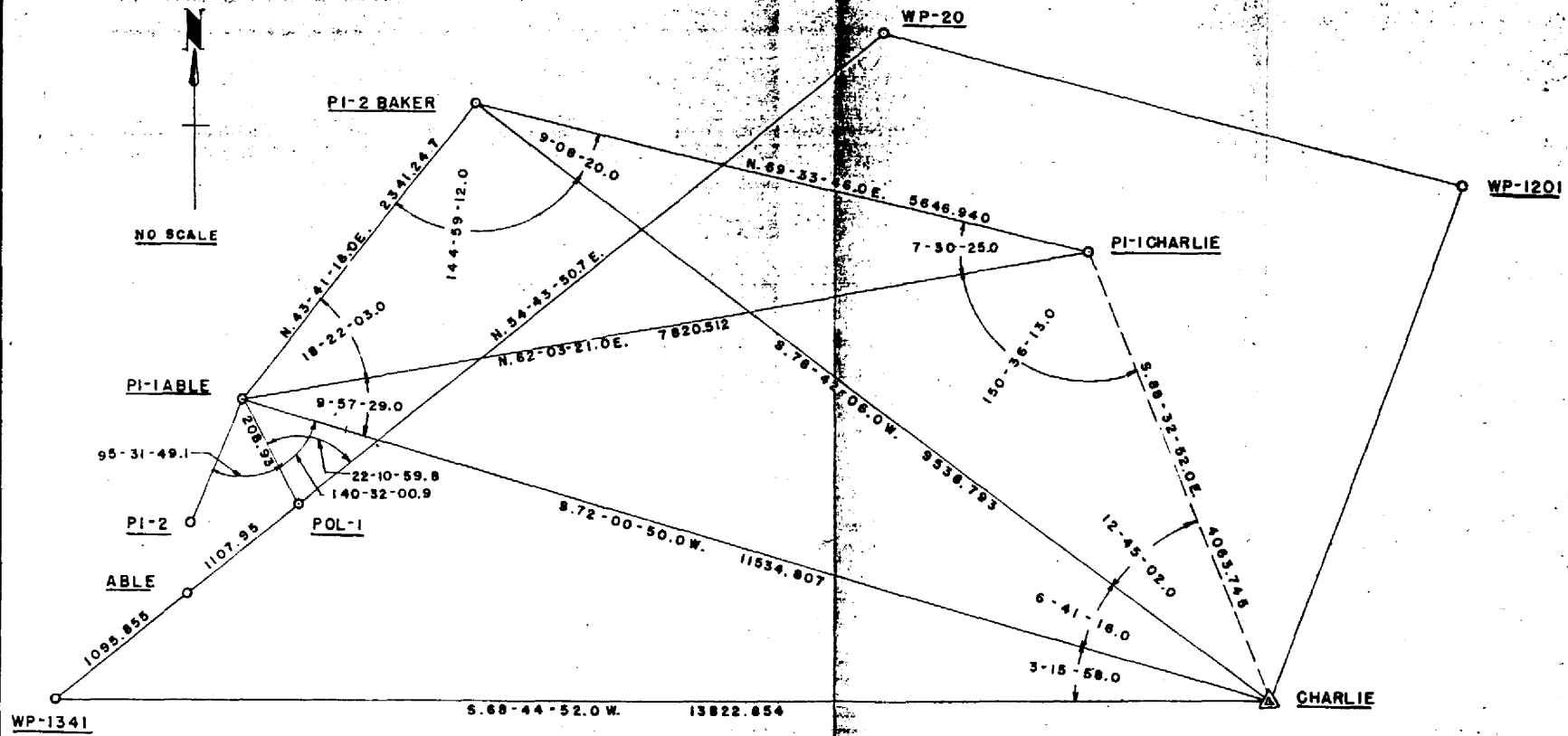
U. S. ATOMIC ENERGY COMMISSION SANTA FE OPERATIONS OFFICE			
HOLMES & NARVER INCORPORATED ENGINEERS-CONSTRUCTORS 828 S. FIGUEROA ST., LOS ANGELES 17, CALIF.			
DRAWN BY L S H	CHECKED BY M. R. T.	DATE 10-9-53	SHEET NO. 7205
JOB NO. 884	APPROVED: <i>[Signature]</i>	CH 17	

DECLASSIFIED PER DOE
 LETTER DATED JULY, 15, 1994
 FROM ANTON SINISGALLI TO
 DIANE S. NIXON

OFFICIAL USE ONLY

THIS IS AN OFFICIAL DOCUMENT OF THE UNITED STATES.
 IT MAY NOT BE PUBLISHED, REPRODUCED, OR USED FOR
 OTHER THAN OFFICIAL PURPOSES WITHOUT THE PRIOR
 WRITTEN CONSENT OF THE UNITED STATES ATOMIC
 ENERGY COMMISSION AND IS SUBJECT TO RECALL.
 ANY VIOLATION WILL BE SUBJECT TO PUNISHMENT
 UNDER THE LAWS OF THE UNITED STATES.

OFFICIAL USE ONLY



Reproduced from the Holdings of the National Archives
 Pacific Southwest Region

STATION	PLANE COORDINATES	
	NORTH	EAST
Δ CHARLIE	171,297.20	82,923.80
PI-1 CHARLIE	171,400.19	78,861.36
PI-2 BAKER	169,428.38	73,569.87
PI-1 ABLE	167,735.41	71,952.68
POL-1	167,559.29	71,840.28
ABLE	166,919.54	70,935.67

**ORIENTATION OF TRAVERSES
ABLE TO CHARLIE AREA**

DECLASSIFIED PER DOE
 LETTER DATED JULY, 15, 1984
 FROM LINTON SINIGALLI TO
 DIANE S. NIXON

U. S. ATOMIC ENERGY COMMISSION SANTA FE OPERATIONS OFFICE			
HOLMES & NARVER, INC. ENGINEERS-CONSTRUCTORS			
828 S. FIGUEROA ST., LOS ANGELES 17, CALIF.			
DRAWN BY L.S.H.	CHECKED BY M.R.T.	DATE 10-9-53	SHEET NO. 7208
JOB NO. 884	APPROVED <i>[Signature]</i>	-AB- 17	

THIS IS AN OFFICIAL DOCUMENT OF THE UNITED STATES.
 IT MAY NOT BE PUBLISHED, REPRODUCED, OR USED FOR
 OTHER THAN OFFICIAL PURPOSES WITHOUT THE PRIOR
 WRITTEN CONSENT OF THE UNITED STATES ATOMIC
 ENERGY COMMISSION AND IS SUBJECT TO RECALL.
 ANY VIOLATION WILL BE SUBJECT TO PUNISHMENT
 UNDER THE LAWS OF THE UNITED STATES.

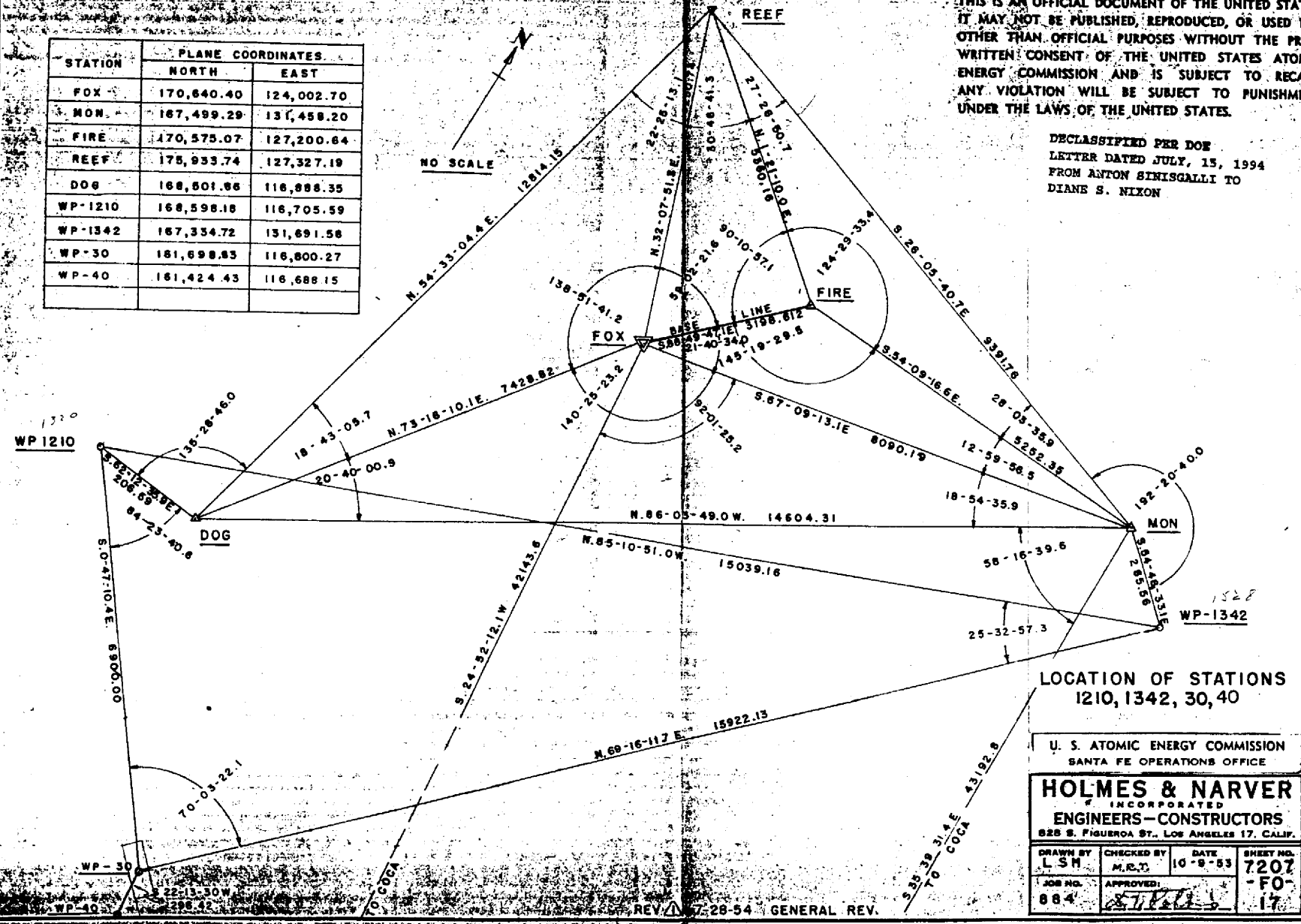
OFFICIAL USE ONLY

OFFICIAL USE ONLY

THIS IS AN OFFICIAL DOCUMENT OF THE UNITED STATES. IT MAY NOT BE PUBLISHED, REPRODUCED, OR USED FOR OTHER THAN OFFICIAL PURPOSES WITHOUT THE PRIOR WRITTEN CONSENT OF THE UNITED STATES ATOMIC ENERGY COMMISSION AND IS SUBJECT TO RECALL. ANY VIOLATION WILL BE SUBJECT TO PUNISHMENT UNDER THE LAWS OF THE UNITED STATES.

DECLASSIFIED PER DOE LETTER DATED JULY, 15, 1994 FROM ANTON SIMISGALLI TO DIANE S. NIXON

STATION	PLANE COORDINATES	
	NORTH	EAST
FOX	170,640.40	124,002.70
MON	167,499.29	131,458.20
FIRE	170,575.07	127,200.64
REEF	175,933.74	127,327.19
DOG	168,501.66	116,888.35
WP-1210	168,598.18	116,705.59
WP-1342	167,334.72	131,691.58
WP-30	181,698.63	116,800.27
WP-40	161,424.43	116,688.15



LOCATION OF STATIONS
1210, 1342, 30, 40

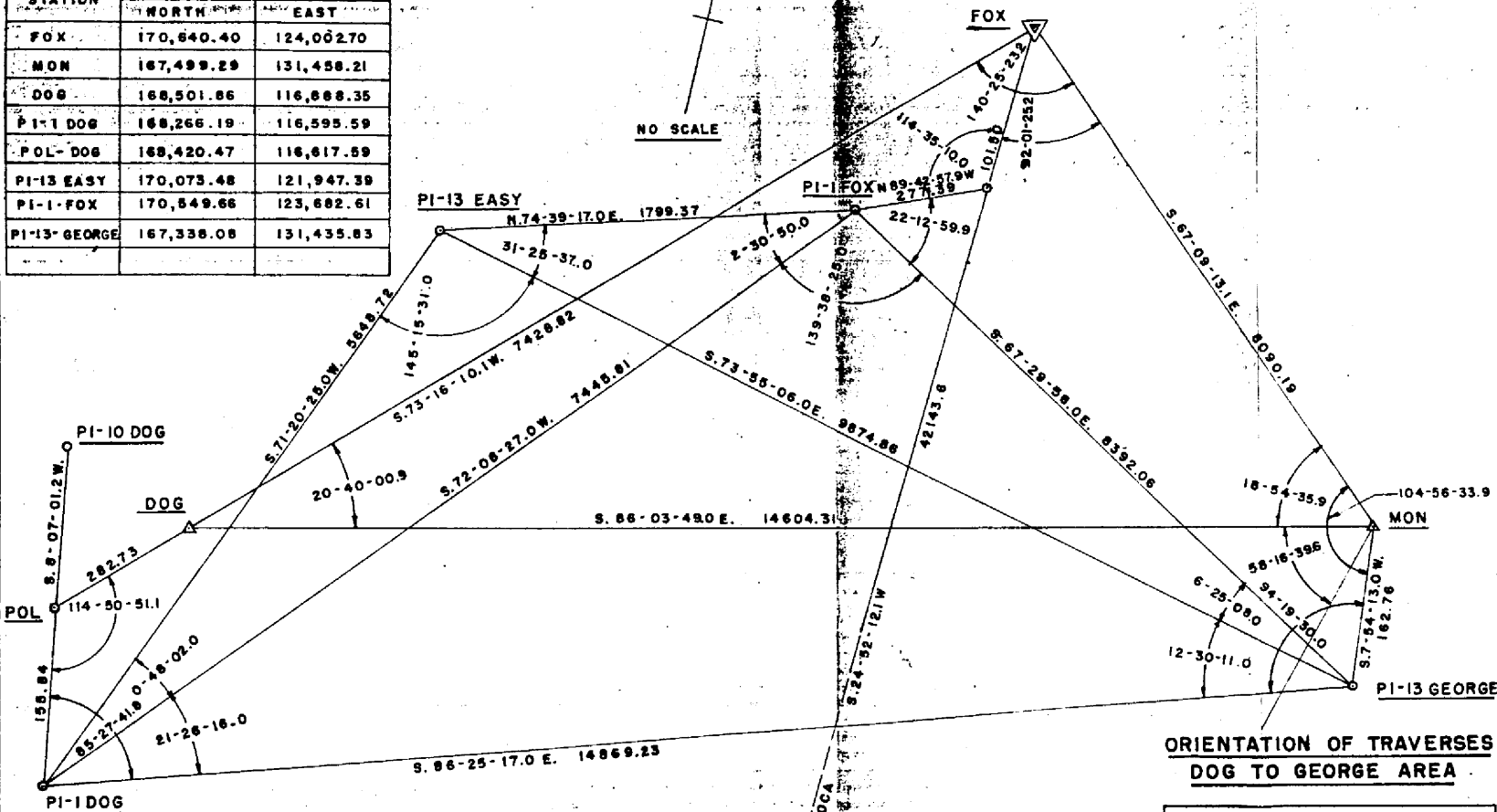
U. S. ATOMIC ENERGY COMMISSION SANTA FE OPERATIONS OFFICE			
HOLMES & NARVER INCORPORATED ENGINEERS-CONSTRUCTORS 825 S. FIGUEROA ST., LOS ANGELES 17, CALIF.			
DRAWN BY L S H	CHECKED BY M. R. T.	DATE 10-8-53	SHEET NO. 7207
JOB NO. 884	APPROVED <i>[Signature]</i>		FO 17

REV. 7-28-54 GENERAL REV.

40

U.S. Atomic Energy Commission
 Pacific Southwest Region
 Santa Fe Operations Office

STATION	PLANE COORDINATES	
	NORTH	EAST
FOX	170,640.40	124,002.70
MON	167,499.29	131,458.21
DOG	168,501.86	116,688.35
PI-1 DOG	168,266.19	116,595.59
POL-DOG	169,420.47	116,617.89
PI-13 EASY	170,075.48	121,947.39
PI-1-FOX	170,549.66	123,682.61
PI-13-GEORGE	167,338.08	131,435.83



**ORIENTATION OF TRAVERSES
DOG TO GEORGE AREA**

U. S. ATOMIC ENERGY COMMISSION
SANTA FE OPERATIONS OFFICE

HOLMES & NARVER
INCORPORATED
ENGINEERS-CONSTRUCTORS
828 S. FIGUEROA ST., LOS ANGELES 17, CALIF.

DRAWN BY L S H	CHECKED BY M R T	DATE 10-9-53	SHEET NO. 7206
JOB NO. 884	APPROVED: <i>[Signature]</i>		-00-17

S. 35-39-31.5 E.
TO A COCA

DECLASSIFIED PER DOE
LETTER DATED JULY, 15, 1994
FROM ANTON SINISGALLI TO
DIANE S. NIXON

THIS IS AN OFFICIAL DOCUMENT OF THE UNITED STATES.
IT MAY NOT BE PUBLISHED, REPRODUCED, OR USED FOR
OTHER THAN OFFICIAL PURPOSES WITHOUT THE PRIOR
WRITTEN CONSENT OF THE UNITED STATES ATOMIC
ENERGY COMMISSION AND IS SUBJECT TO RECALL.
ANY VIOLATION WILL BE SUBJECT TO PUNISHMENT
UNDER THE LAWS OF THE UNITED STATES.

TRAVERSE & AREA COMPUTATION

COMPUTED BY L.S.H. DATE 2-9-66
 CHECKED BY H.A. DATE 2-9-66

JOB NO. 942 LOCATION BIKINI ATOLL M.I.
 REFERENCES

STATION	COURSES		FUNCTIONS			LATITUDE		DEPARTURE		CO-ORDINATES		D. M. D.	DOUBLE AREA	
	BEARING	DISTANCE	COSINE	SINE	TANGENT	NORTH	SOUTH	EAST	WEST	NORTH (Y)	EAST (X)		+ AREA	- AREA
YAKE										116,536.8	70,016.8			
BARRE	S74-14-33.69E	60.62281	97491097	22649223	22262112		132,472.6	17,011.6		103,279.6	137,028.4			
YAKE										116,536.8	70,016.8			
GAGA-2	N66-16-36.3E	29.69118	60219204	91638040		16,929.01		36240.97		132,475.8	106,257.8			
UNCLE										99,856.1	99,188.1			
GAGA-2	N12-12-43.4E	33.376111	92230984	21101471		32,619.39		7049.66		132,475.8	106,257.8			
BARRE										103,279.6	137,028.4			
EPGA-2	N36-21-43.2W	31.830128	81483787	69648892		29,196.22		20,770.61		132,475.8	106,257.8			
N. MAN										148,398.0	167,092.4			
EPGA-2	S71-19-59.0W	62.883762	26319986	94781399			15,922.16	60,834.62		132,475.8	106,257.8			
YAKE										116,536.8	70,016.8			
EMVCK	N12-06-19.2E	56.788724	97228244	22461920		16,311.27		12,869.42		171,848.1	82,886.2			
DACHSY	S74-33-08.4E	34.200948	02493653	92148332			3227.93	33,847.38		168,620.1	116,733.6			
GAGA-2	S16-09-48.0W	37.431847	96047223	27837461			36,144.34	10475.22		132,475.8	106,257.8			
EMVCK										171,848.1	82,886.2			
EPGA-2	S30-41-36.8E	61.781519	81929449	51044621			39,372.27	23,371.66		132,475.83	106,257.76			
N. MAN										148,398.0	167,092.4			
GORRIS	N61-50-42.2W	40.139653	47186229	88167729		18,940.01		25,390.22		167,338.0	131,702.2			
DACHSY	N81-06-16.6W	11.022424	08627222	99636212		1282.06		14,968.62		168,620.1	116,733.6			
GORRIS										167,338.0	131,702.2			
EPGA-2	S36-07-26.8W	43.160039	20774187	68962632			36262.17	25,444.41		132,475.8	106,257.8			

HOLMES & NARVER, INC. - ENGINEERS-CONSTRUCTORS

TRAVERSE & AREA COMPUTATION

COMPUTED BY L.S.H. DATE 7-6-56
 CHECKED BY _____ DATE _____

JOB NO. 942 LOCATION BIKINI ATOLL M.I.
 REFERENCES _____

STATION	COURSES		FUNCTIONS			LATITUDE		DEPARTURE		CO-ORDINATES		D. M. D.	DOUBLE AREA	
	BEARING	DISTANCE	COSINE	SINE	TANGENT	NORTH	SOUTH	EAST	WEST	NORTH (Y)	EAST (X)		+ AREA	- AREA
<u>1953 COORDINATES</u>														
A FIRE														
NP-1210	579-19-57.11													
	10-40-02.29	10679.614	98271806	18510870	18236404		1976.89		10496.05	170.57607	127.20044			
										168.59218	116.70659			
A FIRE														
NP-1342	354-11-18.55													
	35-48-47.5	5637.907	58512183	21094540	72163046		3240.35		4490.94	170.57607	127.20044			
										167.33472	131.69152			
NP-1210														
NP-1342	121-10-51.05	15039.16												
<u>1955 COORDINATES</u>														
DACHSY														
FIRE	N79-26-18.4E	10647.91	825775	98300512		1964.719		10466.951		168.6201	116.72316			
GOBBS-2	S54-16-59.5E	5644.52	58377958	81191234			3236.776	4501.664		170.57422	127.20211			
										167.33824	131.70221			
DACHSY														
NP-1210	S62-38-36.6N	36.89	60677677	79487229			22.584		29.322	168.6201	116.72316			
FIRE	N79-19-57.4E	10622.86	18510731	98271851		1977.105		10496.277		170.57422	127.20056			
GOBBS														
NP-1342	S70-34-16.7N	10.995	33245057	94312002			3.656		10.570	168.6201	116.72316			
FIRE	N64-11-23.9N	5638.24	58509921	81094143		3240.422		4491.299		167.33434	131.69183			
										170.57476	127.20053			

Reproduced from the holdings of the National Archives
 Pacific Southwest Region