

*in house Facsimile*

402664

112  
1131

*TR-4199*

*H-8*

*F-23, B-186*

*R*

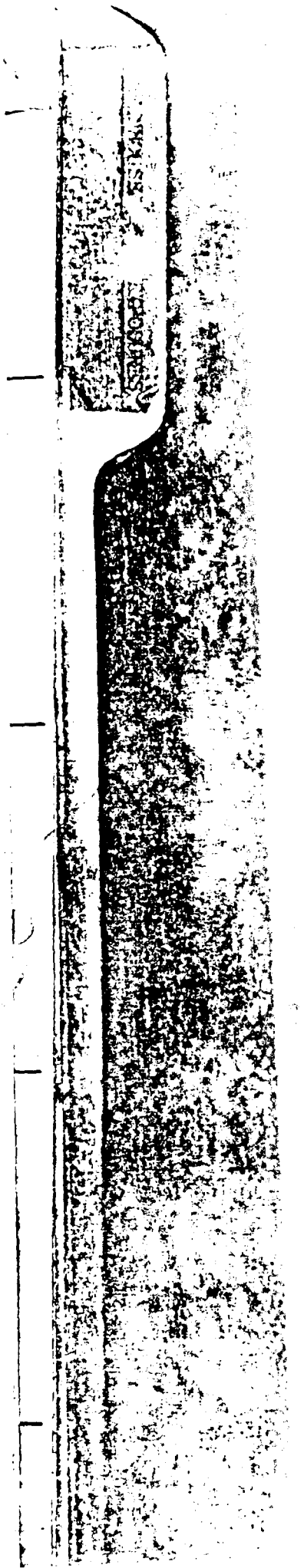
VERIFIED UNCLASSIFIED

*Am. Redman*

SEP 27 1979

**THIS FOLDER**  
 contains  
**Classified**  
**Documents**

Documents must not be left unattended or unauthorized personnel may have access to them. When not in use, they must be stored in an approved file or safe. You are responsible for these Documents at all times while they are loaned to you.



PHOTOGRAPHIC MATERIAL REMOVED

Copy of H-7 records, results GREENHOUSE EXPOSURES recorded in individual records.

Name:

records.  
Milli-rountgens  
Total Exposure

7  
175  
1,085  
7  
7  
70  
70  
180  
175  
70  
7  
180  
7  
275  
70  
220  
160  
3,417  
1,561  
2,371  
3,392  
147  
112  
70  
2,436  
469  
810

Records  
1,085  
70  
1,085  
1,085

Classification changed to  
by authority of the U.S. Atomic Energy Commission  
by *[Signature]*  
(Date of action, including the change, and date)

PHOTOGRAPHIC MATERIAL REMOVED

~~PHOTOGRAPHIC MATERIAL REMOVED~~

Name:

PRIVACY ACT MATERIAL REMOVED

Total Exposure

3,632

56

224

408

1,655

756

1,255

2,657

1,769

298

1,133

286

63

1,022

5,370

1,554

2,923

3,990

1,554

2,688

2,688

3,990

2,688

3,990

2,688

1,554

1,554

PRIVACY ACT MATERIAL REMOVED

~~CONFIDENTIAL~~

Greenhouse Exposures

COPY  
-3-

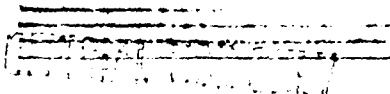
Name:

Total Exposure

PRIVACY ACT MATERIAL REMOVED

3,990  
3,990  
1,554  
1,554  
3,990  
3,990  
3,990  
3,990  
1,491  
3,990  
3,990  
4,140  
3,640  
4,065  
2,993  
697  
1,540  
3,990  
3,794  
3,990  
3,990  
4,779  
3,374  
1,085  
1,470  
2,905  
1,554

PRIVACY ACT MATERIAL REMOVED





Greenhouse Exposures

COPY  
-4-

Name:

PRIVACY ACT MATERIAL REMOVED

Total Exposure

3,990

3,338

3,990

1,526

3,388

3,388

3,990

4,710

3,990

1,554

3,990

3,990

3,990

4,070

3,150

3,388

3,990

3,990

3,990

2,870

112

77

4,263

77

760

420

~~CONFIDENTIAL~~

PRIVACY ACT MATERIAL REMOVED

Greenhouse Exposures

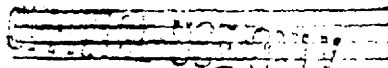
COPY

-5-

Name:

Total Exposure

PRIVACY ACT MATERIAL REMOVED 4,944  
5,310  
3,069  
2,487  
3,700  
6,420  
2,474  
6,056  
8,205  
1,220  
434  
2,215  
434  
1,022  
1,559  
168  
1,022  
704  
861  
2,235  
123  
1,040  
112  
98  
4,966  
8,463  
4,569



PRIVACY ACT MATERIAL REMOVED

<u>Name</u>	<u>Total Exposure</u>
PRIVACY ACT MATERIAL REMOVED	9,210
	7,280
	4,644
	2,841
	3,990
	6,700
	3,395
	1,040
	9,830
	6,570
	7,064
	8,955
	3,854
	1,554
	1,745
	1,085
	1,639
	1,484
	1,404
	900
	640
	5,313
	6,365
	307
	5,274
	405

~~CONFIDENTIAL ONLY~~

PRIVACY ACT MATERIAL REMOVED

Greenhouse Exposures

40FY  
-7-

Name:

PRIVACY ACT MATERIAL REMOVED

Total Exposures

5,407

102

5,083

367

3,749

4,344

3,639

7,775

330

702

5,798

407

92

235

3,794

645

5,334

112

2,674

8,230

625

3,668

2,436

2,710

~~CONFIDENTIAL~~

PRIVACY ACT MATERIAL REMOVED

Greenhouse Exposures

0071  
-8-

Page

PRIVACY ACT MATERIAL REMOVED

Total Exposures

132  
 2,674  
 2,440  
 112  
 1,554  
 2,520  
 289  
 2,954  
 2,660  
 1,554  
 1,554  
 1,554  
 7  
 2,660  
 2,574  
 3,388  
 2,489  
 4,594  
 1,324  
 4,352  
 2,423  
 1,554  
 162  
 2,273  
 2,394

PRIVACY ACT MATERIAL REMOVED

PRIVACY ACT MATERIAL REMOVED

<u>Name</u>	<u>PRIVACY ACT MATERIAL REMOVED</u>	<u>Total Exposures</u>
		3,104
		4,861
		2,567
		1,620
		2,472
		5,286
		3,844
		5,071
		1,554
		1,270
		1,554
		1,854
		1,732
		2,544
		1,148
		7
		84
		1,736
		1,547
		602
		602
		147
		3,721
		3,396
		1,736
		1,554

~~PRIVACY ACT MATERIAL REMOVED~~

PRIVACY ACT MATERIAL REMOVED

Greenhouse Exposures

COPY  
-10-

PRIVACY ACT MATERIAL REMOVED

Name

Total Exposures

1,148

434

728

10,070

2,150

8,540

3,468

7,706

3,574

5.35

1,924

4,599

8,425

3,990

840

3,990

5,650

2,567

4,355

522

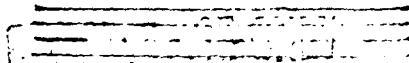
6,140

1,647

1,435

1,211

4,134



PRIVACY ACT MATERIAL REMOVED

Name:

Total Exposure

2,240

512

5,515

1,323

2,506

1,769

~~CONFIDENTIAL~~  
CONFIDENTIAL



194/56

~~CONFIDENTIAL~~

"GREENHOUSE" EXPOSURES

PRIVACY ACT MATERIAL REMOVED

<u>FB</u>	<u>Exord</u>	<u>70% Exord</u>	<u>Total</u>
6.08	5.70	3.99	10.07
5.84	5.70	3.99	9.83
5.22	5.70	3.99	9.21
4.97	5.70	3.99	8.96
4.55	5.70	3.99	8.54
5.47	4.28	3.00	8.47
4.44	5.70	3.99	8.43
4.24	5.70	3.99	8.23
4.22	5.70	3.99	8.21
3.79	5.70	3.99	7.78
4.50	4.58	3.21	7.71
3.29	5.70	3.99	7.28
5.71	2.22	1.55	7.26
5.51	2.22	1.55	7.06
3.75	4.50	3.15	6.90
2.90	5.70	3.99	6.89
5.15	2.22	1.55	6.70
2.58	5.70	3.99	6.57
2.43	5.70	3.99	6.42
2.38	5.70	3.99	6.37
2.15	5.70	3.99	6.14
2.26	5.42	3.79	6.05
1.81	5.70	3.99	5.80
1.66	5.70	3.99	5.65

PRIVACY ACT MATERIAL REMOVED

~~CONFIDENTIAL~~

~~CONFIDENTIAL~~

CAUTION

Department of Justice  
Federal Bureau of Investigation  
Washington, D.C. 20535

PRIVACY ACT MATERIAL REMOVED

	<u>FB</u>	<u>Excd</u>	<u>70% bkcd</u>	<u>Total</u>
	1.53	5.70	3.99	5.52
	2.73	3.82	2.67	5.40
	1.54	5.42	3.79	5.33
	1.93	4.84	3.39	5.32
	1.32	5.70	3.99	5.31
	2.08	4.58	3.21	5.29
	2.60	3.82	2.67	5.27
	1.70	4.84	3.39	5.08
	1.87	4.58	3.21	5.07
	4.09	1.28	.88	4.97
	2.27	3.82	2.67	4.94
	1.66	4.58	3.21	4.87
	1.41	4.82	3.37	4.78
	.72	5.70	3.99	4.71
	.85	5.42	3.79	4.64
	3.89	1.02	.71	4.60
	2.20	3.42	2.39	4.59
	3.02	2.22	1.55	4.57
	.37	5.70	3.99	4.36
	.67	5.26	3.68	4.35
	1.67	3.82	2.67	4.34
	.88	4.84	3.39	4.27
	.15	5.70	3.99	4.14
	.34	5.42	3.79	4.13
	.08	5.70	3.99	4.07
		5.70	3.99	3.99

PRIVACY ACT MATERIAL REMOVED

~~CONFIDENTIAL~~  
INTERNAL USE ONLY

CAUTION  
~~CONFIDENTIAL~~  
INTERNAL USE ONLY



PRIVACY ACT MATERIAL REMOVED

<u>FB</u>	<u>Fixed</u>	<u>70% Fixed</u>	<u>Total</u>
	5.70	3.99	3.99
	5.70	3.99	3.99
.06	5.42	3.79	3.85
2.29	2.22	1.55	3.84
	5.42	3.79	3.79
	5.42	3.79	3.79
1.08	3.82	2.67	3.75
2.19	2.22	1.55	3.74
.52	4.58	3.21	3.73
2.15	2.22	1.55	3.70
.28	4.84	3.39	3.67
	5.20	3.65	3.65
.24	4.84	3.39	3.63
2.86	1.02	.71	3.57
1.91	2.22	1.55	3.46
.05	4.81	3.36	3.41
.19	4.58	3.21	3.40
	4.85	3.40	3.40
	4.84	3.39	3.39
	4.84	3.39	3.39
	4.84	3.39	3.39
	4.84	3.39	3.39
	4.84	3.39	3.39
	4.82	3.37	3.37
	4.50	3.15	3.15
1.55	2.22	1.55	3.10
.40	3.82	2.67	3.07

PRIVACY ACT MATERIAL REMOVED

This document contains information affecting the National Defense of the United States within the meaning of the Espionage Laws, Title 18, United States Code, Sections 793 and 794, and the transmission or revelation of its contents in any manner to an unauthorized person is prohibited by law.

**CONFIDENTIAL**

Greenhouse" Exposures (Continued)

PRIVACY ACT MATERIAL REMOVED	<u>FB</u>	<u>Board</u>	<u>70% Board</u>	<u>Total</u>
		4.28	3.00	3.00
		4.22	2.95	2.95
.24		3.84	2.69	2.93
		4.15	2.91	2.91
.21		3.80	2.66	2.87
1.46		1.98	1.39	2.85
.05		3.80	2.66	2.71
		3.84	2.69	2.69
		3.84	2.69	2.69
		3.84	2.69	2.69
		3.84	2.69	2.69
		3.82	2.67	2.67
		3.82	2.67	2.67
		3.48	2.66	2.66
		3.48	2.66	2.66
.06		3.71	2.60	2.66
1.02		2.21	1.55	2.57
1.02		2.21	1.55	2.57
.11		3.52	2.46	2.57
.99		2.22	1.55	2.54
		3.60	2.52	2.52
		3.58	2.51	2.51
.31		3.12	2.18	2.49
.93		2.22	1.55	2.48
.92		2.22	1.55	2.47
.92		2.22	1.55	2.47
		3.43	2.44	2.44

**CAUTION**

the

PRIVACY ACT MATERIAL REMOVED

PRIVACY ACT MATERIAL REMOVED	FB	Exed	70% Exed	Total
		3.48	2.44	2.44
		3.48	2.44	2.44
		3.47	2.43	2.43
	.23	3.14	2.20	2.43
		3.42	2.39	2.39
	.07	3.29	2.30	2.37
	.08	3.14	2.20	2.28
		3.20	2.24	2.24
	.74	2.14	1.50	2.24
	1.88	.49	.34	2.22
	.82	1.90	1.33	2.15
	1.00	1.32	.92	1.92
	.42	1.90	1.33	1.75
	.22	2.22	1.55	1.77
	.30	2.22	1.55	1.85
		2.38	1.74	1.74
		2.38	1.74	1.74
	.19	2.21	1.55	1.74
	.15	2.10	1.47	1.62
	.37	1.82	1.27	1.64
	.88	1.10	.77	1.65
	.10	2.21	1.55	1.65
	.51	1.64	1.15	1.66
	.95	.87	.61	1.56
		2.22	1.55	1.55
PRIVACY ACT MATERIAL REMOVED		2.22	1.55	1.55
		2.22	1.55	1.55

This document contains information affecting the national defense of the United States within the meaning of the Espionage Laws, Title 18, United States Code, Sections 793 and 794, and the transmission or revelation of its contents in any manner to an unauthorized person is prohibited by law.

<u>FB</u>	<u>Excd</u>	<u>70% Excd</u>	<u>Total</u>
	2.22	1.55	1.55
PRIVACY ACT MATERIAL REMOVED	2.22	1.55	1.55
	2.22	1.55	1.55
	2.21	1.55	1.55
	2.22	1.55	1.55
	2.22	1.55	1.55
	2.22	1.55	1.55
	2.22	1.55	1.55
	2.22	1.55	1.55
	2.22	1.55	1.55
	2.22	1.55	1.55
	2.22	1.55	1.55
	2.22	1.55	1.55
	2.22	1.55	1.55
	2.20	1.51	1.51
	2.18	1.53	1.53
	2.13	1.49	1.49
.21	1.82	1.27	1.48
	2.10	1.47	1.47
	2.05	1.44	1.44
.13	1.82	1.27	1.40
1.21	.17	.12	1.33
	1.89	1.32	1.32
.43	1.20	.84	1.27
.87	.55		1.26

PRIVACY ACT MATERIAL REMOVED

<sup>39</sup> CAUTION

...ecting the  
...ents in  
...hibited.

PRIVACY ACT MATERIAL REMOVED	<u>FB</u>	<u>Exord</u>	<u>70% Exord</u>	<u>Total</u>
	.88	.49	.34	1.22
		1.73	1.21	1.21
		1.61	1.15	1.15
		1.64	1.15	1.15
	.23	1.29	.90	1.13
		1.60	1.12	1.12
		1.55	1.09	1.09
		1.55	1.09	1.09
		1.55	1.09	1.09
	.73	.44	.31	1.04
		1.49	1.04	1.04
		1.46	1.02	1.02
		1.46	1.02	1.02
		1.46	1.02	1.02
	.36	.87	.61	.97
	.90			.90
	.12	1.07	.75	.87
		1.20	.84	.84
		1.15	.81	.81
	.18	.90	.63	.81
		1.09	.76	.76
		1.08	.76	.76
		1.04	.73	.73
	.60	.15	.11	.71
	.20	.71	.50	.70
	.64			.64
	.52	.15	.11	.63

PRIVACY ACT MATERIAL REMOVED

**CONFIDENTIAL**  
 FEDERAL BUREAU OF INVESTIGATION  
 U.S. DEPARTMENT OF JUSTICE



PRIVACY ACT MATERIAL REMOVED

<u>FB</u>	<u>Hard</u>	<u>706 Hard</u>	<u>Total</u>
	.86	.60	.60
	.86	.60	.60
.10	.61	.43	.53
.18	.46	.33	.51
	.67	.47	.47
	.62	.43	.43
	.62	.43	.43
	.62	.43	.43
	.60	.42	.42
.30	.15	.11	.41
.40	.01	.01	.41
.24	.24	.17	.41
.36	.01	.01	.37
.23	.15	.11	.34
.30	.01	.01	.31
.24	.09	.06	.30
.16	.18	.13	.29
.10	.29	.18	.28
.13	.15	.11	.24
	.32	.22	.22
.04	.29	.18	.22
.07	.16	.11	.18
.08	.14	.10	.18
	.29	.18	.18
.08	.14	.10	.18
	.24	.17	.17

PRIVACY ACT MATERIAL REMOVED

~~OFFICIAL USE ONLY~~

This document contains information...

CAUTION

~~CONFIDENTIAL~~

...the...  
...the...  
...the...

PRIVACY ACT MATERIAL REMOVED

<u>FD</u>	<u>Card</u>	<u>702 Card</u>	<u>Total</u>
.07	.14	.10	.17
.05	.16	.11	.16
	.21	.15	.15
	.21	.15	.15
.15			.15
	.17	.12	.12
	.18	.12	.12
	.16	.11	.11
	.16	.11	.11
	.16	.11	.11
	.16	.11	.11
.07	.06	.04	.11
.07	.04	.03	.10
	.14	.10	.10
.05	.06	.04	.09
	.12	.08	.03
	.11	.08	.08
	.11	.08	.08
	.10	.07	.07
	.10	.07	.07
	.10	.07	.07
	.10	.07	.07
	.10	.07	.07
	.08	.06	.06
PRIVACY ACT MATERIAL REMOVED	.09	.06	.06
	.01	.01	.01

PRIVACY ACT MATERIAL REMOVED

~~CONFIDENTIAL~~  
~~CONFIDENTIAL~~  
~~CONFIDENTIAL~~

This document is CONFIDENTIAL  
 CONFIDENTIAL  
 CONFIDENTIAL

Greenhouse Exposures (Continued)

PRIVACY ACT MATERIAL REMOVED	FE	Filed	725 Filed	Total
		.01	.01	.01
		.01	.01	.01
		.01	.01	.01
		.01	.01	.01
		.01	.01	.01
		.01	.01	.01
		.01	.01	.01
				None
				None
				none
				None
				None
				None
				None
				None
				None

PRIVACY ACT MATERIAL REMOVED

CAUTION

This document contains information that is exempt from release under the Freedom of Information Act, 5 U.S.C. 552, and the Privacy Act, 5 U.S.C. 552a. It is intended for the use of the recipient only and should not be disseminated to other personnel. If you are not an intended recipient, you should not disseminate, distribute or copy this document. If you have received this document in error, please notify the person whose name is typed at the bottom of this page. This document is exempt from release under the Freedom of Information Act, 5 U.S.C. 552, and the Privacy Act, 5 U.S.C. 552a.

[Redacted]

[Redacted]

*AmR* NOV - 5 1980



DEPARTMENT OF DEFENSE  
 D FORCES SPECIAL WEAPONS PROJECT  
 P. O. BOX 2610  
 WASHINGTON, D. C.

ADDRESS REPLY TO:  
 THE CHIEF, ARMED FORCES  
 SPECIAL WEAPONS PROJECT

25 June 1951

UNCLASSIFIED

Classification changed to \_\_\_\_\_  
 by authority of the U. S. Atomic Energy Commission.

For *R. Keoh* 12-1-58  
 (Person authorizing change in classification) (Date)

By *Bertha Grant* 12-2-58  
 (Signature of person making the change, and date)

Dr. Thomas N. White  
 P. O. Box 1663  
 Los Alamos, New Mexico

Dear Tom:

I am inclosing a copy of the report of external radiation received by personnel on Parry Island as a result of fallout after Shot Item. This material will be contained in the Item Shot report compiled by General Cooney.

Similar data is available for the post-Dog Shot in General Cooney's official report of Dog Shot addressed to CTG 3.1. This report should be on file with 3.1 at Los Alamos. I do not have an additional copy but have extracted the pertinent data which is hereby included:

Extract of Annex A to Dog Shot of CTU 3.1.5:

"Decay curves indicated a possible component with a 7.7 hour half-life, followed by a  $1/T^{1.2}$  law. Assuming a  $1/T^{1.2}$  decay and no loss from leaching the maximum dosage expected can be calculated for future times.

Integrated dose to D / 30 days	2210 mr
D / 60 days	2705 mr

Film badges were given to a group of monitors in Task Unit 3.1.5 with instructions to wear these at all times except when on missions to other islands. These films were developed on D / 3 days and 10 hours.

Parry - mean 890 mr - range 1,400 to 560  
 (maximum expected 1,190 mr)

Japtan - mean 1,040 mr - range 1,600 to 825  
 (maximum expected 1310 mr)

The maximum values for Japtan were estimated from survey meter readings which were about 10% greater than those on Parry Island. No comparable data is available from Eniwetok Island but survey meter readings made early in the fallout showed intensities about two-thirds of those on Parry Island.



It is evident that some reduction in the integrated dose was obtained by remaining inside except for essential outdoor activities."

Again let me compliment you on your fine work during Operation GREENHOUSE, and the exceptionally fine document entitled "Greenhouse Fallout".

Sincerely,



G. M. McDonnell  
Major, MC  
Medical Branch

Incls  
GMM/mlj

~~CONFIDENTIAL~~

SUBJECT: External Radiation From Fall-Out Following Shot Item

TO: Commander, Task Unit 3.1.5

1. At approximately 1 1/3 hours and 23 minutes gamma ray recorder at RadSafe building, Parry Island showed a sharp rise followed by a drop to nearly the original reading. This "spike" is interpreted as the result of the passage of an active cloud from which little material fell out. Several other "spikes" of activity appeared during the next few minutes and were followed by a steady rise in activity due to fall-out until about 1 1/4 hours 45 minutes. Fallout started again at 1 3/8 hours and continued until 1 13/16 hours 45 minutes. From 1 16 hours the activity decayed according to a  $T^{-1.2}$  law.
2. A continuous record of gamma ray intensities have been maintained. The attached curve shows the record connected to  $\mu\text{r/hr}$  at an outside location. Starting at 1 12 hours integrated doses out of doors have been determined using pocket ion chambers and photographic film badges. These have been placed at locations representative of conditions on Parry Island.
3. The integrated dose out of doors has been determined by numerical integration of the intensity curve in the early phases and from direct dose measurements in the later phases. The cumulative dose curve is attached.
4. An incomplete but reasonably representative survey of Eniwetok Island indicates that the situation there is almost identical with that on Parry. No data are available from Japten.
5. Assuming that decay continues according to a  $T^{-1.2}$  law it is possible to predict total doses for future times. For

1 15 days total expected dose is 7,570  $\mu\text{r}$   
1 30 days total expected dose is 9,520  $\mu\text{r}$

~~CONFIDENTIAL~~  
Atomic Energy Act 1946

~~CONFIDENTIAL~~

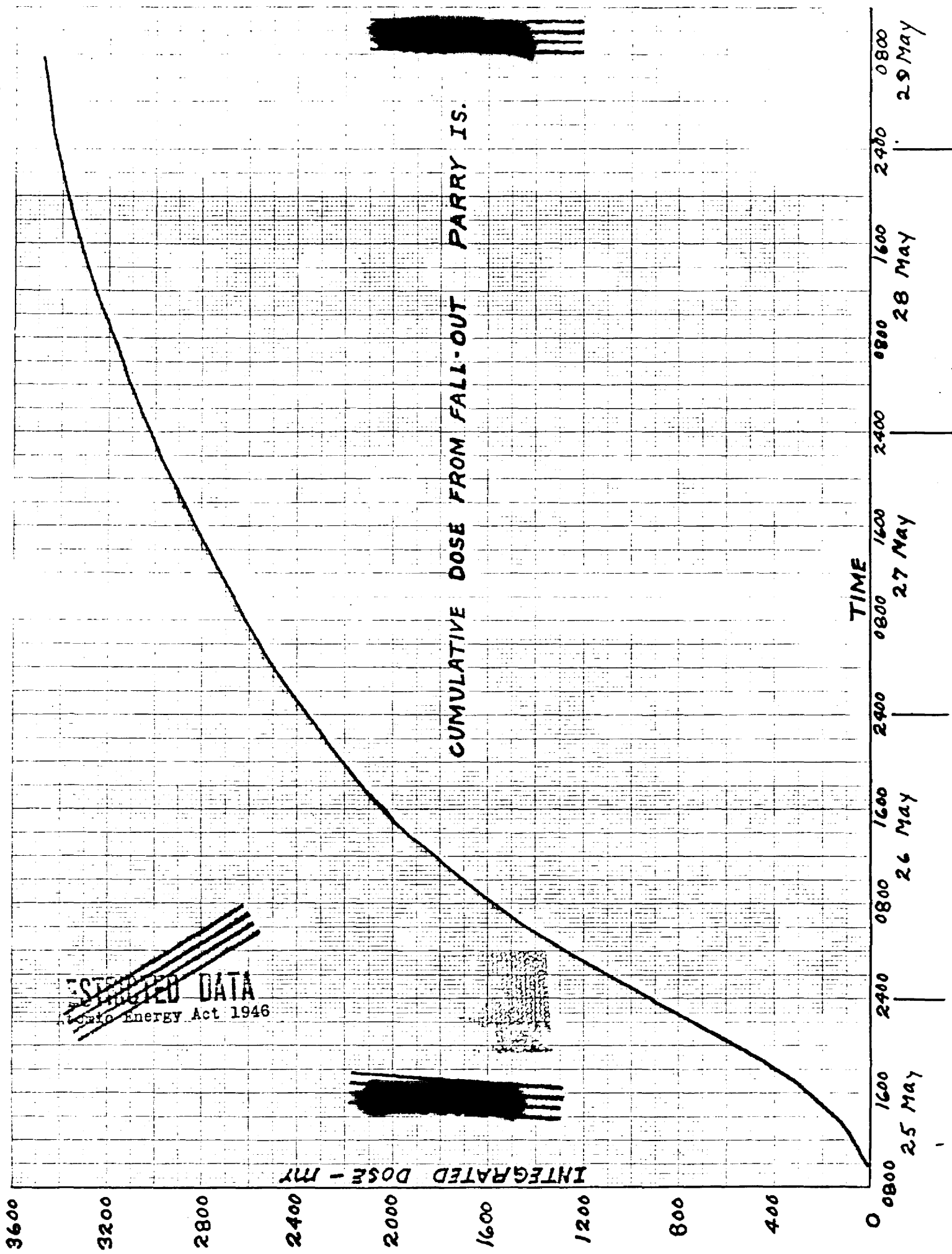
Encl #1

[REDACTED]

CUMULATIVE DOSE FROM FALL-OUT PARRY IS.

~~ESTIMATED DATA~~  
Atomic Energy Act 1946

[REDACTED]



INTEGRATED DOSE - MR

TIME

3600  
3200  
2800  
2400  
2000  
1600  
1200  
800  
400  
0

0800 25 MAY  
1600 25 MAY  
2400 25 MAY  
0800 26 MAY  
1600 26 MAY  
2400 26 MAY  
0800 27 MAY  
1600 27 MAY  
2400 27 MAY  
0800 28 MAY  
1600 28 MAY  
2400 28 MAY  
0800 29 MAY

MT  
1400

# CUMULATIVE DOSE - PARRY

FIG 4

1200

1000

800

600

400

200

0600

2400

2400

2400

2400

2400

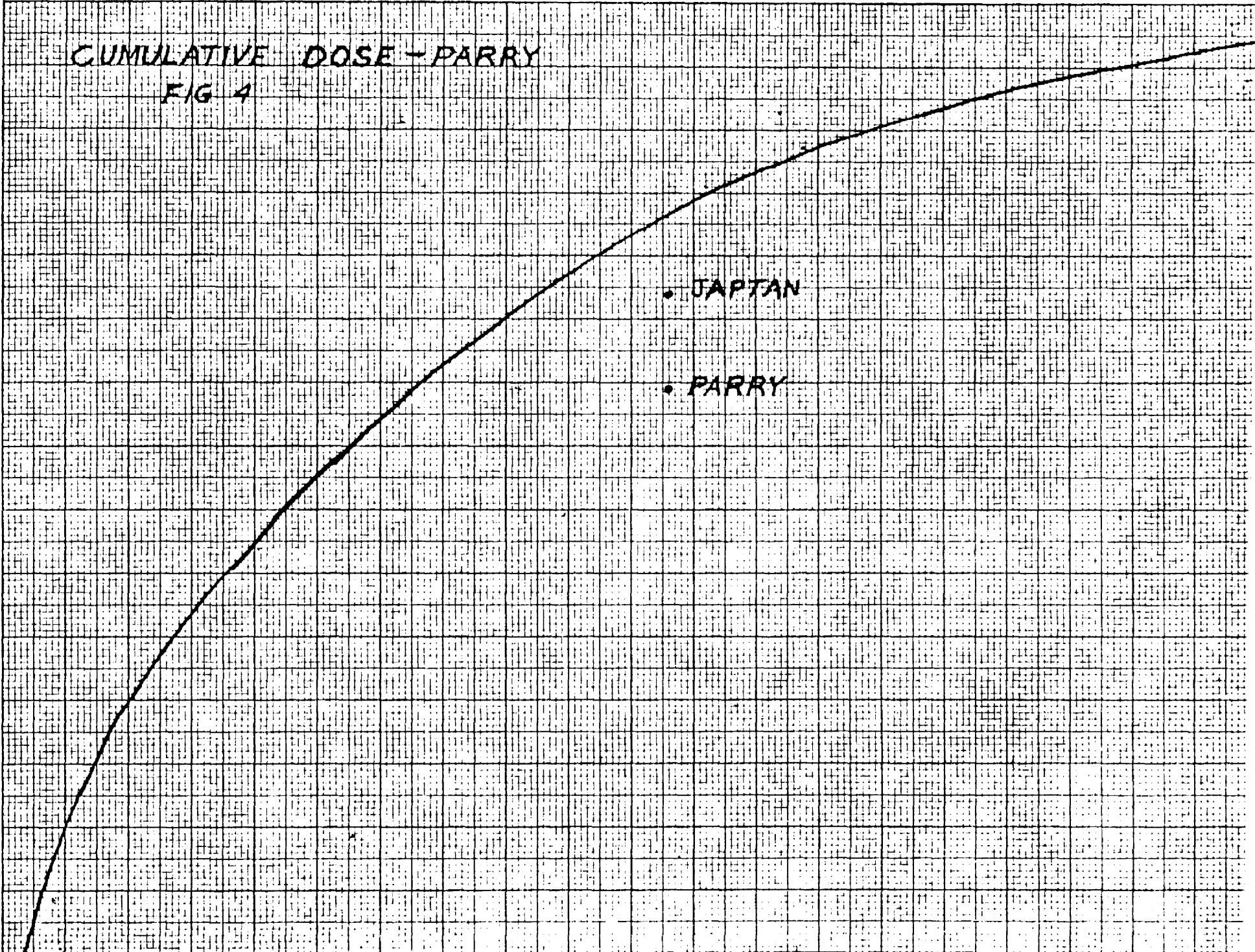
2400

2400

2400

• JAPTAN

• PARRY





SUBJECT: External Radiation Doses to 28 May 1951

TO: Commander, Task Unit 3.1.5

1. An analysis of all radiation exposures as shown by photographic film badges has been made as of 28 May 1951. The exposure data presented represent only that obtained in various missions connected with the test program.

2. Film badge data from 3,395 individuals shows an average exposure of 510 mr. Excluding 919 individuals showing exposures of 100 mr or less the average is 710 mr.

3. The distribution of the doses received is shown in the attached curve.

4. Data from Task Unit 3.1.5 was not complete at the time of this report and could not be analyzed.

Sheet # 2

PRIVACY ACT MATERIAL REMOVED

Yr	Mo	Day	Name	Rank	Branch	Count	Location
9-1		1	JTF S	Brig Gen	A	1	
9-2		2	Kirtland AFB	Lt Col	AF	1	
9-3		3	WVAF	Captain	N	1	
9-4		4	AMTB DC	Major	A	1	
9-5		5	LASL	Major	A	1	
9-6		6	PT of Tex	Lt	N	2	
9-7		7	Houston	Capt	A	2	
9-8		8	LASL	Capt	A	2	
9-9		9	Keeler AFB	1st Lt	AF	2	
9-10		10	A 1100 US	Capt	AF	1	
9-11		11	Dr. ...	Lt Col	A	1	
9-12		12	Army Med	Lt Col	A	1	
9-13		13	ACC	Capt	AF	2	307 Bomb Wing MacDill AFB FLA
9-14		14	ACC	Capt	A	2	
9-15		15	CERLAB	Lt Col	N	1	
9-16		16	USMC	Major	USMC	1	
9-17		17	1165 Pilot	Capt	AF	2	307 Bomb Wing MacDill AFB FLA
9-18		18	NRDI	Lt Col	N	1	
9-19		19	Sp. ...	Capt	USMC	2	
9-20		20	PTC, WASH DC	Lt	N	2	307 Bomb Wing MacDill AFB FLA
9-21		21	San Diego	Lt	N	2	
9-22		22	AFSC	Lt Col	N	1	
9-23		23	Army Med	Capt	AF	2	SWC, Kirtland AFB N.M.
9-24		24	ACC	Capt	A	1	
9-25		25	M. ...	Capt	A	2	
9-26		26	M. ...	Capt	A	1	Pt San Houston
9-27		27	McClellan AFB	Capt	AF	2	
9-28		28	"	1st Lt	AF	2	
9-29		29	"	1st Lt	AF	2	
9-30		30	"	1st Lt	AF	2	
9-31		31	T.I. Calif	Lt	N	2	
9-32		32	WVAF	Capt	N	1	
9-33		33	R/S San Fran	DOC	N	3	
9-34		34	R/S San Fran	DOC	N	3	
9-35		35	Abolished	Lt Col	A	1	
9-36		36	PTC	Capt	USPHE	1	
9-37		37	Bethesda	Civ	N	1	
9-38		38	U. of Iowa	Civ	N	1	
9-39		39	Eniwetok	1st Lt	A	2	
9-40		40	ETC	ETC	N	3	
9-41		41	Wash DC	Capt	A	2	
9-42		42	1st Sgt	M/Sgt	A	3	
9-43		43	1st Sgt	M/Sgt	A	3	
9-44		44	1st Sgt	M/Sgt	AF	3	
9-45		45	1st Sgt	M/Sgt	N	3	
9-46		46	1st Sgt	M/Sgt	AF	3	Fort Bliss TX
9-47		47	1st Sgt	M/Sgt	AF	3	
9-48		48	1st Sgt	M/Sgt	AF	3	
9-49		49	1st Sgt	M/Sgt	AF	3	Big Co. 11th Airborne Div Camp Campbell, Ky
9-50		50	1st Sgt	M/Sgt	N	3	
9-51		51	1st Sgt	M/Sgt	N	3	
9-52		52	1st Sgt	M/Sgt	N	3	
9-53		53	1st Sgt	M/Sgt	N	3	
9-54		54	1st Sgt	M/Sgt	N	3	
9-55		55	1st Sgt	M/Sgt	N	3	
9-56		56	1st Sgt	M/Sgt	N	3	
9-57		57	1st Sgt	M/Sgt	N	3	
9-58		58	1st Sgt	M/Sgt	N	3	
9-59		59	1st Sgt	M/Sgt	N	3	
9-60		60	1st Sgt	M/Sgt	N	3	
9-61		61	1st Sgt	M/Sgt	N	3	
9-62		62	1st Sgt	M/Sgt	N	3	
9-63		63	1st Sgt	M/Sgt	N	3	
9-64		64	1st Sgt	M/Sgt	N	3	
9-65		65	1st Sgt	M/Sgt	N	3	
9-66		66	1st Sgt	M/Sgt	N	3	
9-67		67	1st Sgt	M/Sgt	N	3	
9-68		68	1st Sgt	M/Sgt	N	3	
9-69		69	1st Sgt	M/Sgt	N	3	
9-70		70	1st Sgt	M/Sgt	N	3	
9-71		71	1st Sgt	M/Sgt	N	3	
9-72		72	1st Sgt	M/Sgt	N	3	
9-73		73	1st Sgt	M/Sgt	N	3	
9-74		74	1st Sgt	M/Sgt	N	3	
9-75		75	1st Sgt	M/Sgt	N	3	
9-76		76	1st Sgt	M/Sgt	N	3	
9-77		77	1st Sgt	M/Sgt	N	3	
9-78		78	1st Lt	AF	N	2	Lockland AFB San Antonio TX
9-79		79	1st Lt	AF	N	1	San Antonio TX

VERIFIED UNCLASSIFIED  
 SEP 27 1979

PRIVACY ACT MATERIAL REMOVED

U.o.f.c.	Drunkhouse Ranger	Total
0	6.42	6.42
0	8.21	8.29
0	8.45	9.52*
<.01	9.21	12.79*
.01	7.28	8.46
.01	6.57	6.58
.01	7.06	7.86
<.01	8.96	8.96
.00	6.45	6.45
	8.77	8.77
X	8.65	8.65

L FTG UTU  
 Chesapeake Bay, Norfolk, Va  
 OE 3712 BMTS  
 Lackland AFB, San Antonio, Tex

PRIVACY ACT MATERIAL REMOVED

*Greenhouse memo*

PRIVACY ACT MATERIAL REMOVED

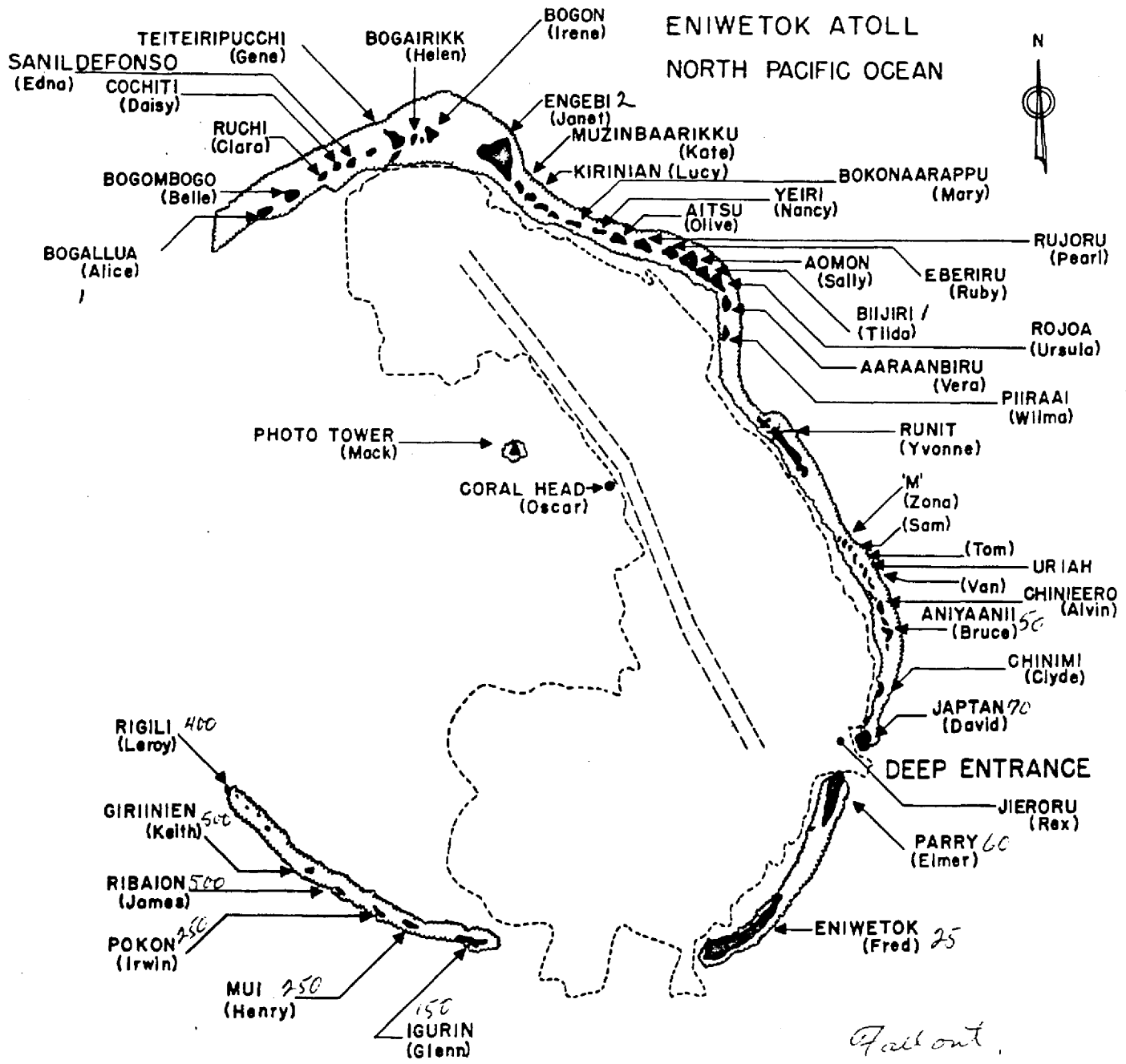
USA	□
USN	□□
USA	□□□
USAF	□□□□
USN	□□□□
USA	□□□□
USA	□□□□
USN	□□□□
USA	□□□□
USN	□□□□
USA	□□□□ □
USA	□□□□ □
USMC	□□□□ □
USN	□□□□ □
USAF	□□□□ □
USAF	□□□□ □
USAF	□□□□ □
USA	□□□□ □
USN	□□□□ □
USA	□□□□ □
USA	□□□□ □
USAF	□□□□ □
USN	Not □□□
USA	Not □□□
USN	Not □□□
USMC	Not □□□
USAF	Not □□□
USAF	Not □□□
USAF	Not □□□
USN	Not □□□
USPHS	Not □□□

USA

7

- copy 2
- copy 6
- copy 6
- copy 4

ED

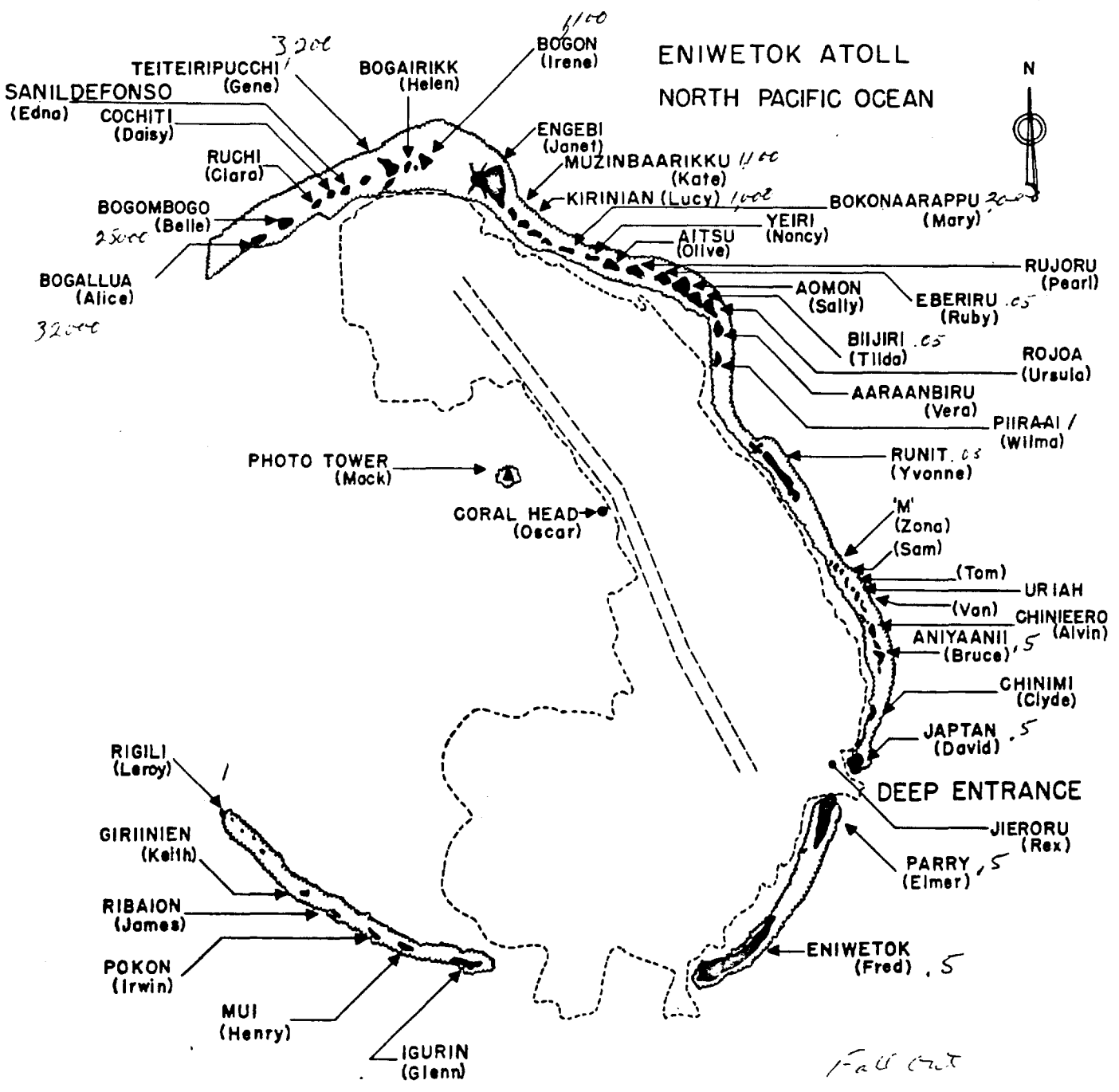


Fail out.

H + 750

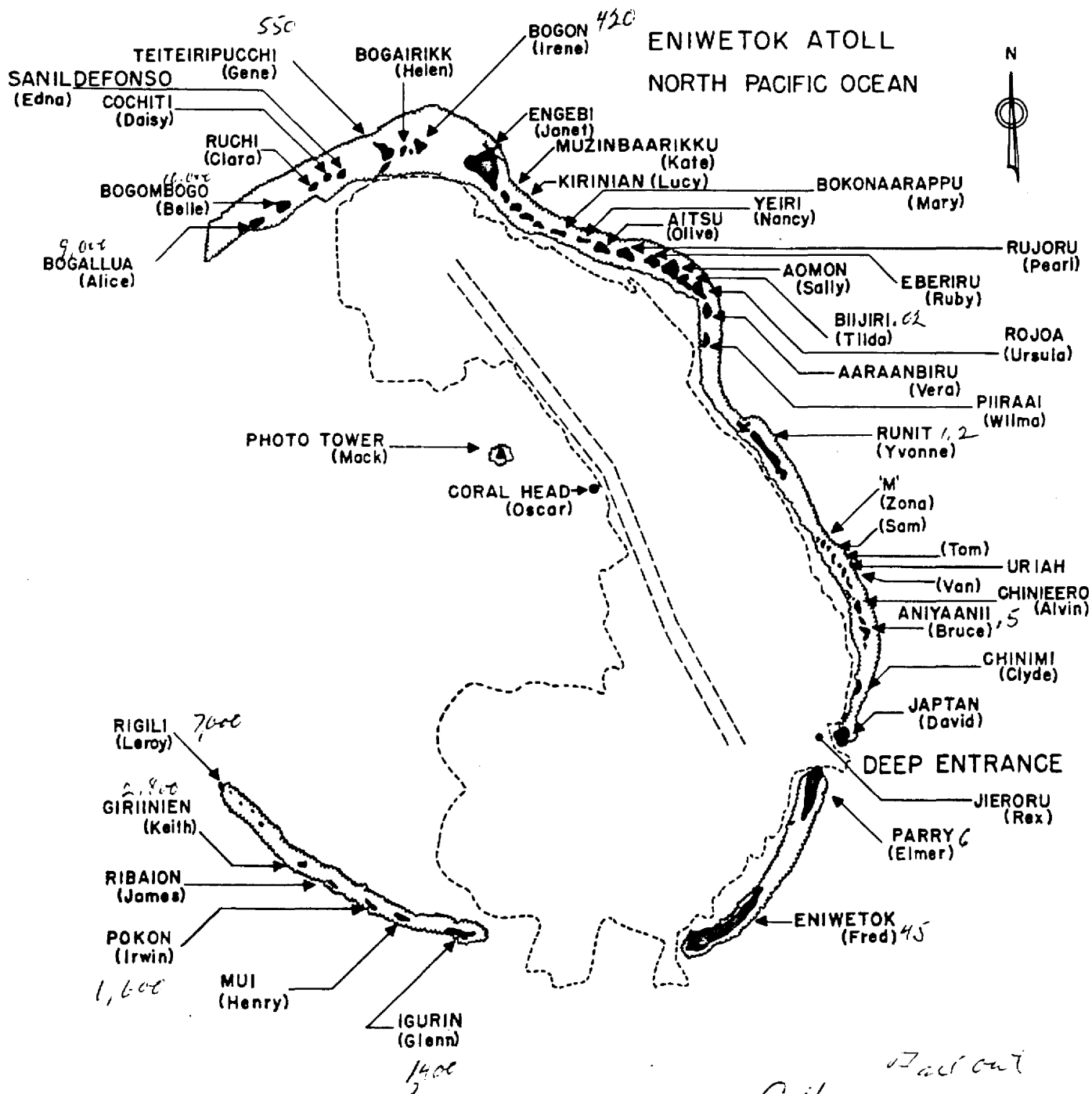
G. H. Day,  
4/8/51

~~OFFICIAL USE ONLY~~



Fall out  
GH  
F 4/21/51

~~OFFICIAL USE ONLY~~



GH  
Jan 5/25/51  
1000

J - 9023

6 November 1951

Armed Forces Special Weapons Project  
Washington, D. C.

Attention: Technical Library

Gentlemen:

In accordance with letter dated 28 September 1951, from Col. George F. Schlatter, Division of Military Application, to Dr. A. C. Graves, Los Alamos Scientific Laboratory, we are forwarding to you under separate cover the two boxes of cards bearing radiological exposure data from GREENHOUSE.

It is our understanding that you are prepared to accept these data for permanent retention.

Very truly yours,

ORIGINAL SIGNED BY LEO G. CHELINS

Leo G. Chelins  
Rad-Safety Group

LOC:jds

cc: Col. G. F. Schlatter  
J-Division  
Mail & Records  
Rad-Safe File ←



12300

920

~~FOR OFFICIAL USE ONLY~~  
UNITED STATES  
ATOMIC ENERGY COMMISSION  
WASHINGTON 25, D. C.

IN REPLY REFER TO:

MATA:RLS

September 28, 1951

Dr. Alvin C. Graves  
Los Alamos Scientific Laboratory  
Los Alamos, New Mexico

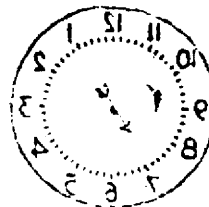
Dear Dr. Graves:

Reference is made to your letter of September 17, 1951 in which you indicated that you have no desire to retain the radiological exposure data from GREENHOUSE on a permanent basis. We have been informed by the Armed Forces Special Weapons Project that they will accept the data for permanent retention at any time you wish to make transmittal. They specified, however, that all the data should be shipped at the same time and to the attention of the Technical Library.

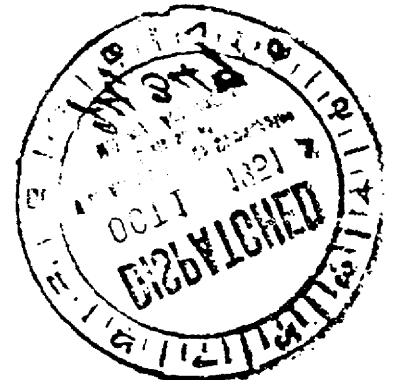
Sincerely yours,

George F. Schlatter  
Colonel, USAF  
Division of Military Application

... 12 3 1951



LOS ALAMOS SCI LAB  
1-DIVISION  
RECEIVED



~~FOR OFFICIAL USE ONLY~~

Telecon Bob Patten, P-1, to J. Snumway

9/25/51

Reference memo prepared by Rad Safe re radiation dosages:  
No individuals in the Alpha Measurements Unit for B-J (P-1) have received a dosage greater than that specified in the ref. letter. None have received any radiation of any consequence in their regular work. (We would have record of their exposures in Monday)

Only two members of Unit were at Greenhouse: \_\_\_\_\_ and \_\_\_\_\_

At Ranger: The above two men, plus \_\_\_\_\_

None of the other members of the Unit have participated in any of the test operations.

name *Bumhouse*

	Org.	Org. Ldr	Proj.	Proj Ldr	Roster dit
T.O. 3.1.2 ✓		<i>Washed and ...</i>			
1. Bum #1 ✓		No Com			
2. Bum #1 ✓		No Com			
3. Bum #1 ✓		No Com			
4. Bum #1 ✓		No Com			
5. Bum #1 ✓		No Com			
6. Bum #1 ✓		No Com			
7. Bum #1 ✓		No Com			
8. Bum #1 ✓		No Com			
		<i>Army Chemical Center</i>			
		<i>6.9 Not Going</i>			

PRIVACY ACT MATERIAL REMOVED

1. FTG UTU					
2. Chesapeake Bay					
3. Norfolk Va					
4. (1) ✓					<i>Red Safe</i>
5. 3.1.5 ✓		No Com			
6. (1) ✓		<i>Talbot, Maryland</i>			
7. 3.1.5		No Com			
8. " 3712 BMTS					
9. " Lackland AFB					
10. " San Antonio, Texas					<i>Red Safe</i>
11. " ✓	No Com.				<i>USAF Sch of Avn Med, Randolph AFB</i>
12. " ✓	No Com				<i>Near Bu Med &amp; Surg. D.C.</i>
13. 3.1.6	No Com				<i>747 Acft. 800 Sq 9, NAAS Cecil Field</i>
14. 3.1.6	No C.				<i>Documentation Pathology by Lo Gardner</i>

PRIVACY ACT MATERIAL REMOVED



Name	Greenhouse	Proj. Org.	Org. Ldr.	Proj.	Proj. Ldr.	Roster Date
	D-5	U of C.		Hq. 10.6	Ogle	7 Oct
	D-5	U of C.	No Commitment			
	D-5	U of C.		10.10	Zadina	27 Oct 30 Nov
	1.1	NRL ✓	No Com			
	1.1	NRL ✓	No Com			
	1.5.1	U of C.		Hq. 10.0	Ogle	7 Oct 3 Dec
	1.1.5.1	U of C.		10.8	Clyde Cowan	Dry Run 3 days to start
	1.5.1	U of C.		"	"	"
	1.5.1	Departed				
	1.5.1	U of C.	Not Committed			
	5.1	U of C.		10.8	Same as Biggles	
	1.5.1	U of C.		10.8	Same as Biggles	
	1.5.1	U of C.		10.8	Same as Biggles	
	1.5.3	NRL ✓	No Com			
	1.5.3	NRL ✓	No Com			
	1.5.3	NRL ✓	No Com			
	1.5.3	NRL ✓	No Com			
	1.7	U of C.	No Commitment			
	1.7	U of C.	No Commitment			
	1.7	U of C.		10.4	Spence	(11 Oct - 4 Nov)
	1.7	Not Going				
	3.1.2	Not Going				
	✓	Naval Med. Inst.	No Com			
	"	Naval Med. Res. Inst.	No Com			

TO TASK GROUP 5.1

UC  
Name

68

Film Badge

PRIVACY ACT MATERIAL REMOVED

Fall-out

Totals

~~Register~~

Name

F. B. Residence

~~Bleed~~

70% ~~Bleed~~

Totals

1.60	4/1 to 4/27	1.82	1.27	2.87
.27	4/2 to 4/29	1.90	1.33	1.60
—	2/13 to 5/27	4.84	3.39	3.39
—	1/22 to 5/31	5.70	3.99	3.99
—	2/27 to 5/27	4.84	3.39	3.39
—	3/9 to 5/23	2.22	1.55	1.55
—	3/9 to 5/14	2.22	1.55	1.55
—	2/23 to 5/29	5.70	3.99	3.99
—	3/6 to 5/27	4.84	3.39	3.39
—	1/12 to 1/26 3/2 to 5/29	5.70	3.99	3.99
—	3/25 to 6/11	5.70	3.99	3.99
1.32	1/9 to 2/3 3/4 to 5/29	5.70	3.99	5.31 <del>4.99</del>
.62	2/17 to 6/4	5.70	3.99	4.61
2.06	2/12 to 5/31	5.70	3.99	6.05
—	1/30 to 5/5	2.10	1.47	1.47
—	2/12 to 6/4	5.70	3.99	3.99
.86	2/17 to 6/4	5.70	3.99	4.85
.17	2/12 to 5/31	5.70	3.99	4.16
—	2/27 to 6/4	5.70	3.99	3.99
0	2/27 to 6/4	5.70	3.99	3.99
.82	2/17 to 6/4	5.70	3.99	4.81
—	2/12 to 5/31	5.70	3.99	3.99
—	2/17 to 6/6	5.70	3.99	3.99
—	2/12 to 5/31	5.70	3.99	3.99

PRIVACY ACT MATERIAL REMOVED

<u>Name</u>	<u>Film - base</u>	PRIVACY ACT MATERIAL REMOVED	<u>Fall-out</u>	<u>Total</u>
Name	F. B	Readiness	70% Bkgd	Total
2.63	2/17 to 2/20 3/31 to 5/31	5.70	3.99	6.62
.69	2/17 to 5/31	5.70	3.99	4.68
.23	2/12 to 5/22	2.22	1.55	1.78
0	2/12 to 5/28	3.20	2.24	2.24
1.14	3/22 to 6/4	5.70	3.99	5.13
.55	2/17 to 4/29	1.90	1.33	1.88
.49	2/17 to 5/28	3.20	2.24	2.73
1.33	1/29 to 5/1	1.98	1.39	2.72
1.71	2/17 to 6/4	5.70	3.99	5.70
.82	1/29 to 5/28	3.20	2.24	3.05
.15	3/22 to 4/30	1.94	1.36	1.51
1.76	2/17 to 5/28	3.20	2.24	4.00
.98	2/12 to 6/4	5.70	3.99	4.97
—	2/12 to 6/4	5.70	3.99	3.99
.72	2/17 to 6/4	5.70	3.99	4.71
—	2/28 to 6/4	5.70	3.99	3.99
.13	2/17 to 5/22	2.22	1.55	1.68
.28	2/17 to 5/28	3.20	2.24	2.52
—	3/29 to 5/10	2.20	1.54	1.54
0	2/12 to 5/10	2.20	1.54	1.54
.08	1/30 to 4/30	1.94	1.36	1.44
.31	2/17 to 5/31	5.70	3.99	4.30
1.09	2/12 to 5/31	5.70	3.99	5.08
.80	2/17 to 6/4	5.70	3.99	4.7

<u>Name</u>	<u>Film-badge</u>	PRIVACY ACT MATERIAL REMOVED	<u>Full-out</u>	<u>Total</u>	
Name	F. B.	Residence	Badge	70% Badge	Total
1.64		2/17 to 6/4	5.70	3.99	5.63
.56		2/12 to 5/31	5.70	3.99	4.55
—		3/3 to 5/17	2.22	1.55	1.55
.36		3/4 to 6/6	5.70	3.99	4.35
5.15		2/28 to 5/24	2.22	1.55	6.70
.52		1/30 to 5/12	2.22	1.55	2.07
—		3/31 to 5/27	4.82	3.37	3.37
.71		2/5 to 5/22	2.22	1.55	2.26
.15		3/11 to 5/22	2.22	1.55	1.70
1.32		3/5 to 5/30	5.70	3.99	5.31
0		1/30 to 4/18	1.46	1.02	1.02
2.66		3/15 to 4/14	1.29	.90	3.56
.62		3/1 to 5/16	2.22	1.55	2.17
—		2/24 to 5/8	2.17	1.52	1.52
—		2/14 to 6/4	5.70	3.99	3.99
1.80		3/6 to 5/14	2.22	1.55	3.35
.44		1/30 to 5/13	2.22	1.55	1.99
2.77		2/14 to 5/13	2.22	1.55	4.32
.27		3/1 to 5/14	2.22	1.55	1.82
—		3/7 to 5/30	5.70	3.99	3.99
2.21		3/11 to 5/19	2.22	1.55	3.76
.88		2/13 to 5/14	2.22	1.55	2.43
1.17		3/1 to 5/17	2.22	1.55	2.77
.08		2/24 to 5/17	2.22	1.55	1.1

PRIVACY ACT MATERIAL REMOVED

<u>Name</u>	<u>Film-badge</u>	<u>Residence</u>	<u>Badge</u>	<u>Fall-out</u>	<u>Total</u>
Name	F. B.	Residence	Badge	70% <del>Badge</del>	Total
	2.38	4/24 to 5/13	.54	.38	2.76
	0	3/1 to 5/19	2.22	1.55	1.55
	.79	3/11 to 5/24	2.22	1.55	2.34
	.37	3/12 to 5/26	3.82	2.67	3.04
	1.32	3/31 to 5/12	2.22	1.55	2.87
	.84	3/1 to 5/17	2.22	1.55	2.39
	1.25	3/5 to 5/30	5.70	3.99	5.24
	2.54	3/1 to 5/29	5.70	3.99	6.53
	.22	1/30 to 5/8	2.17	1.52	1.74
	—	3/14 to 5/30	5.70	3.99	3.99
	—	4/6 to 4/14	1.29	.90	.90
	—	1/6 to 4/18	1.46	1.02	1.02
	.98	2/23 to 5/14	2.22	1.55	2.53
	.66	2/24 to 5/21	2.22	1.55	2.21
	—	3/11 to 5/29	5.70	3.99	3.99
	1.10	3/12 to 5/30	5.70	3.99	5.09
	2.40	2/13 to 5/18	2.22	1.55	<del>3.95</del> 3.95
	4.88	3/12 to 5/30	5.70	3.99	8.87
	—	3/5 to 5/8	2.17	1.52	1.52
	.27	3/6 to 5/24	2.22	1.55	1.82
	.46	2/24 to 5/14	2.22	1.55	2.01
	2.18	3/7 to 5/29	5.70	3.99	6.17
	2.45	2/24 to 5/29	5.70	3.99	6.44
	1.00	2/14 to 5/14	2.22	1.55	2.55

PRIVACY ACT MATERIAL REMOVED



<u>Name</u>	<u>Film-logs</u>	PRIVACY ACT MATERIAL REMOVED	<u>Fall-out</u>	<u>Total</u>
Name	F.B. Residence	<del>Bkgd</del>	70% <del>Bkgd</del>	Total
1.62	3/12 to 5/30	5.70	3.99	5.61
1.16	2/20 to 5/16	2.22	1.55	2.71
1.82	3/17 to 5/29	5.70	<del>3.99</del>	5.81
<del>.52</del>	3/11 to 5/29	5.70	3.99	4.51
.80	3/11 to 5/21	2.22	1.55	2.35
1.17	2/24 to 5/18	2.22	1.55	2.72
1.01	3/5 to 5/30	5.70	3.99	5.00
.83	3/1 to 5/22	2.22	1.55	2.38
—	2/25 to 5/6	2.13	1.49	1.49
—	3/1 to 5/23	2.22	1.55	1.55
.45	3/19 to 5/22	2.22	1.55	2.00
.78	2/14 to 5/15	2.22	1.55	2.33
.09	1/30 to 4/28	1.86	1.30	1.39
—	2/5 to 5/16	2.22	1.55	1.55
—	2/14 to 5/5	2.10	1.47	1.47
—	2/5 to 5/5	2.10	1.47	1.47
.94	3/15 to 5/15	2.22	1.55	2.49
—	1/6 to 4/23	1.63	1.14	1.14
.86	3/9 to 5/24	2.22	1.55	2.41
.05	3/9 to 5/7	2.15	1.51	1.56
.23	3/9 to 5/24	2.22	1.55	1.78
0	3/9 to 4/27	1.82	1.27	1.27
—	3/9 to 5/8	2.17	1.52	1.52
0	3/9 to 5/7	2.15	1.51	1.5

<u>Name</u>	<u>Film - badge</u>	<u>Residence</u>	<u>Badge</u>	<u>Fall-out</u>	<u>Total</u>
Name	F.B.	Residence	Badge	70% Badge	Total
1.53	3/9 to 5/10	2.20	1.54	3.07	
.21	2/1 to 4/26	1.78	1.25	1.46	
—	3/9 to 5/19	2.22	1.55	1.55	
1.44	3/9 to 5/10	2.20	1.54	2.98	
—	3/9 to 5/7	2.15	1.51	1.51	
2.64	2/2 to 4/27	1.82	1.27	3.91	
2.81	3/9 to 5/7	2.15	1.51	4.32	
0	3/9 to 5/19	2.22	1.55	1.55	
.24	3/9 to 5/13	2.22	1.55	1.79	
.42	3/9 to 5/4	2.08	1.46	1.88	
.12	3/9 to 5/4	2.08	1.46	1.58	
.23	3/9 to 5/24	2.22	1.55	1.78	
—	3/9 to 5/17	2.22	1.55	1.55	
.38	3/9 to 5/17	2.22	1.55	1.93	
.33	3/9 to 5/24	2.22	1.55	1.88	
.22	3/9 to 5/17	2.22	1.55	1.77	
.05	3/9 to 5/17	2.22	1.55	1.60	
.48	2/1 to 5/17	2.22	1.55	2.03	
3.09	3/9 to 5/24	2.22	1.55	4.64	
2.78	3/9 to 5/24	2.22	1.55	4.33	
0	2/1 to 5/17	2.22	1.55	1.55	
—	3/9 to 4/26	1.78	1.25	1.25	
—	3/8 to 4/26	1.78	1.25	1.25	
—	3/8 to 4/26	1.78	1.25	1.25	

<u>Name</u>	<u>Film badge</u>	PRIVACY ACT MATERIAL REMOVED	<u>Fall-out</u>	<u>Total</u>	
<u>Name</u>	F.B.	Residence	<del>Beal</del>	70% <del>Beal</del>	Total
	.30	3/8 to 4/26	1.78	1.25	1.55
	—	3/16 to 4/12	1.08	.76	.76
	0	3/9 to 4/21	1.55	1.09	1.09
	.21	3/9 to 4/27	1.82	1.27	1.48
	2.19	3/4 to 5/25	2.22	1.55	3.74
	1.86	2/10 to 5/20	2.22	1.55	3.41
	.24	3/10 to 5/13	2.22	1.55	1.79
	2.19	2/26 to 5/20	2.22	1.55	3.74
	.67	4/5 to 5/28	5.42	3.79	4.46
	—	4/13 to 4/23	.44	.31	.31
	.13	4/3 to 5/27	4.84	3.39	3.52
	1.30	3/20 to 5/13	2.22	1.55	2.85
	2.18	1/15 to 6/7	5.70	3.99	6.17
	—	3/19 to 5/29	5.70	3.99	3.99
	—	4/19 to 5/2	.73	.51	.51
	2.00	3/12 to 5/13	2.22	1.55	3.55
	1.80	3/14 to 5/29	5.70	3.99	5.79
	5.19	1/31 to 5/29	5.70	3.99	9.18
	.09	3/23 to 5/27	4.84	3.39	3.48
	1.83	2/14 to 5/21	2.22	1.55	3.38
	.74	3/12 to 5/22	2.22	1.55	2.29
	1.82	3/9 to 5/13	2.22	1.55	3.37
	.17	4/19 to 6/2	4.21	2.95	3.12
	1.38	4/13 to 5/11	2.22	1.55	2.9

<u>Name</u>	<u>Film-badge</u>	<u>Fall-out</u>	<u>Total</u>
<u>Name</u>	F. B. Residence <del>1329d</del>	70% <del>1329d</del>	Total
—	3/14 to 5/29	5.70	3.99
1.22	10/19 to 5/14	2.22	1.55
.22	3/14 to 5/29	5.70	3.99
.29	3/12 to 5/13	2.22	1.55
4.17	2/14 to 5/28	5.42	3.79
.28	3/1 to 5/19	2.22	1.55
.38	3/1 to 6/5	5.70	3.99
2.32	3/1 to 5/29	5.70	3.99
.36	3/1 to 5/29	5.70	3.99
1.04	3/1 to 5/29	5.70	3.99
.07	3/1 to 6/5	5.70	3.99
.52	3/1 to 6/5	5.70	3.99
—	3/1 to 5/19	2.22	1.55
—	3/1 to 6/5	5.70	3.99
.17	3/1 to 5/19	2.22	1.55
.45	3/1 to 5/19	2.22	1.55
1.06	3/1 to 5/29	5.70	3.99
1.05	3/1 to 5/29	5.70	3.99
1.12	3/1 to 5/29	5.70	3.99
2.37	3/1 to 5/29	5.70	3.99
3.95	3/1 to 5/29	5.70	3.99
.96	3/1 to 5/29	5.70	3.99
—	3/1 to 5/29	5.70	3.99

Name

Film badge

PRIVACY ACT MATERIAL REMOVED

Fall-out

Total

Name

F. B.

Residence

~~Bkgd~~

70% ~~Bkgd~~

Total

.36	3/1 to 6/5	5.70	3.99	4.35
4.06	3/1 to 5/29	5.70	3.99	8.05
—	3/1 to 5/29	5.70	3.99	3.99
4.43	3/1 to 5/29	5.70	3.99	8.42
2.72	3/1 to 5/29	5.70	3.99	6.71
.26	3/1 to 5/29	5.70	3.99	4.25
1.74	3/1 to 5/29	5.70	3.99	5.73
.05	3/1 to 5/29	5.70	3.99	4.04
.53	3/1 to 6/6	5.70	3.99	4.52
.09	3/1 to 5/29	5.70	3.99	4.08
—	3/1 to 5/29	5.70	3.99	3.99
<del>.66</del>	<del>3/1 to 5/29</del>			
<del>1.39</del>	<del>2/1 to 3/19</del>			
<del>1.40</del>	<del>3/1 to 5/29</del>			
<del>1.77</del>	<del>3/12 to 5/13</del>			
<del>—</del>	<del>3/1 to 5/29</del>			
<del>1.24</del>	<del>3/1 to 5/29</del>			
<del>.03</del>	<del>2/1 to 4/28</del>			
<del>.25</del>	<del>3/1 to 5/29</del>			
<del>.52</del>	<del>3/1 to 5/29</del>			
<del>.77</del>	<del>3/1 to 6/5</del>			
<del>.75</del>	<del>3/1 to 6/5</del>			
<del>1.93</del>				

PRIVACY ACT MATERIAL REMOVED

<u>Name</u>	<u>Film badge</u>	PRIVACY ACT MATERIAL REMOVED	<u>Fall-out</u>	<u>Total</u>
Name	F. B.	Residence	Peak	70% <del>Peak</del> total
—		3/1 to 5/14	2.22	1.55
.19		3/13 to 5/12	2.22	1.55
.71		3/13 to 5/6	2.13	1.49
.98		3/4 to 5/6	2.13	1.49
2.03		4/12 to 5/29	4.70	3.29
.10		1/22 to 5/2	2.01	1.41
.37		1/22 to 5/2	2.01	1.41
0		12/3 to 5/2	2.01	1.41
—		2/12 to 5/3	2.05	1.44
0		1/22 to 5/2	2.01	1.41
.23		1/22 to 5/3	2.05	1.44
.12		12/3 to 5/2	2.01	1.41
0		2/12 to 5/3	2.05	1.44
—		1/22 to 4/29	1.90	1.33
.16		12/3 to 5/2	2.01	1.41
.25		1/22 to 5/3	2.05	1.44
.05		12/3 to 4/29	1.90	1.33
.99		2/28 to 5/19	2.22	1.55
1.17		3/13 to 5/14	2.22	1.55
.40		3/13 to 5/14	2.22	1.55
1.02		3/13 to 5/14	2.22	1.55
2.41		3/13 to 5/14	2.22	1.55
.65		3/13 to 5/14	2.22	1.55

<u>Name</u>	<u>Film badge</u>	<u>Residence</u>	<u>Badged</u>	<u>Fall-out</u>	<u>Total</u>
<u>Name</u>	<u>F. B.</u>	<u>Residence</u>	<u>Badged</u>	<u>70% Badged</u>	<u>Total</u>
.38	3/13 to 5/14	2.20	1.55	1.93	
-	3/13 to 5/14	2.20	1.55	1.55	
1.63	3/13 to 5/14	2.20	1.55	3.18	
1.52	3/13 to 5/14	2.20	1.55	3.07	
1.34	3/13 to 5/14	2.20	1.55	2.84	
.46	3/13 to 4/26	1.78	1.25	1.71	
.189	3/13 to 4/26	1.78	1.25	2.14	
1.11	3/26 to 5/16	2.22	1.55	2.66	
1.51	4/2 to 4/25	1.73	1.21	2.72	
.74	3/12 to 4/27	<del>1.82</del>	1.27	2.01	
3.20	3/9 to 5/16	2.22	1.55	3.75	
1.94	2/27 to 5/13	2.22	1.55	3.49	
5.64	2/27 to 5/29	5.70	3.99	9.63	
3.35	3/12 to 5/16	2.22	1.55	4.90	
.56	3/9 to 5/13	2.22	1.55	2.11	
.37	3/2 to 5/31	5.70	3.99	4.36	
4.78	2/27 to 5/31	5.70	3.99	8.77	
1.01	3/9 to 5/13	2.22	1.55	2.56	
.06	3/9 to 5/29	5.70	3.99	4.05	
3.81	2/27 to 5/16	2.22	1.55	5.36	
2.71	3/9 to 5/6	2.13	1.49	4.20	
3.27	2/27 to 5/13	2.22	1.55	<del>4.82</del>	
1.48	3/9 to 5/13	2.22	1.55	3.03	

PRIVACY ACT MATERIAL REMOVED

<u>Name</u>	<u>Film badge</u>		<u>Fall-out</u>	<u>Total</u>	
<u>Name</u>	<u>F. B.</u>	<u>Residence</u>	<u>Wkly</u>	<u>70% Wkly</u>	<u>Total</u>
.38	3/9 to 5/29	5.70	3.99	4.37	
3.04	2/27 to 5/13	2.22	1.55	4.59	
3.80	3/9 to 6/2	5.70	3.99	7.79	
.52	3/9 to 5/29	5.70	3.99	4.51	
3.24	3/12 to 5/27	5.70	3.99	7.23	
.18	3/2 to 5/27	5.70	3.99	4.17	
.36	4/7 to 5/27	5.70	3.99	4.35	

PRIVACY ACT MATERIAL REMOVED



ACT MATERIAL REMOVED

K. DO V-17

Name	Film badge (r)	Fallout (r)	Total (r)
	.56	.95	1.51
	.75	1.09	1.84
	1.03	1.55	2.58
	.49	1.06	1.55
	.32	1.30	1.62
	.35	1.53	1.88
<i>No travel performed</i>			
	.73	1.15	1.88
	.61	1.21	1.82
	.51	.43	.94
	.93	1.55	2.48
	.32	1.55	1.87
	.30	1.25	1.55
	1.18	1.55	2.73
	.54	.64	1.18
	1.47	1.55	3.02
	—	.41	.41
<i>No travel performed</i>			
	.30	1.55	1.85
	0	.38	.38
	1.24	1.55	2.79
	.51	—	.51
	—	1.53	1.53
	.34	1.33	1.67
	.72	.95	1.67
	.69	1.55	2.24
	.28	.38	.66
	.26	1.30	1.56
	—	1.53	1.53
	.71	1.55	2.26
	1.00	1.55	2.55
	1.32	1.55	2.87
	.52	.43	.95
	.70	1.55	2.25
	1.12	1.33	2.45

PRIVATE ACT MATERIAL REMOVED

PRIVACY ACT MATERIAL REMOVED

<i>Name</i>	<i>Film Badge (r)</i>	<i>Fall-out (r)</i>	<i>Total (r)</i>
	1.40	3.99	5.39
	1.77	1.55	3.32
	—	3.99	3.99
	1.24	3.99	5.23
	.03	1.30	1.33
	.25	3.99	4.24
	.52	3.99	4.51
	.77	3.99	4.76
	.75	3.99	4.74
	1.93	1.36	3.29
	.31	3.99	4.30
	.11	3.99	4.10
	—	3.99	3.99
	1.48	3.99	5.47
	.37	.61	.98
	.46	3.99	4.45
	—	1.55	1.55

PRIVACY ACT MATERIAL REMOVED

PRIVACY

Name	F.B.	Residence	Bkgd	70% Bkgd	Total
—		3/11 to 5/29	5.70	3.99	3.99
C. 1.10		3/12 to 5/30	5.70	3.99	5.09
2.40		2/13 to 5/18	2.22	1.55	3.95
4.88		3/12 to 5/30	5.70	3.99	8.87
—		3/5 to 5/8	2.17	1.52	1.52
.27		3/6 to 5/24	2.22	1.55	1.82
.46		2/24 to 5/14	2.22	1.55	2.01
2.18		3/7 to 5/29	5.70	3.99	6.17
2.45		2/24 to 5/29	5.70	3.99	6.44
1.00		2/14 to 5/14	2.22	1.55	2.55
1.62		3/12 to 5/30	5.70	3.99	5.61
1.16		2/20 to 5/16	2.22	1.55	2.71
1.82		3/17 to 5/29	5.70	3.99	5.81
.52		3/11 to 5/29	5.70	3.99	4.51
.80		3/11 to 5/21	2.22	1.55	2.35
.17		2/24 to 5/18	2.22	1.55	2.72
.01		3/5 to 5/30	5.70	3.99	5.00
83		3/1 to 5/22	2.22	1.55	2.38
—		2/25 to 5/6	2.13	1.49	1.49
—		3/1 to 5/23	2.22	1.55	1.55
45		3/19 to 5/22	2.22	1.55	2.00
.78		2/14 to 5/15	2.22	1.55	2.33
<hr/>					
—		1/20 to 4/28	1.86	1.30	1.39
—		2/12 to 5/31	5.70	3.99	3.99
2.63		2/17 to 2/20 2/21 to 5/31	5.70	3.99	6.62
.23		2/12 to 5/22	2.22	1.55	1.78
—		2/5 to 5/16	2.22	1.55	1.55
1.09		2/12 to 5/31	5.70	3.99	5.08
.56		2/12 to 5/31	5.70	3.99	4.55

PRIVACY ACT MATERIAL REMOVED

NRL

Name	F. B.	Residence	Bkagd	100% Bkagd	Total
	.52	1/30 to 5/12	2.21	1.55	2.07
	—	3/31 to 5/27	4.82	3.37	3.37
	.71	2/5 to 5/22	2.22	1.55	2.26
	.15	3/11 to 5/22	2.22	1.55	1.70
	.32	3/5 to 5/30	5.70	3.99	5.31
	0	1/30 to 4/18	1.46	1.02	1.02
	—	2/23 to 5/8	2.17	1.52	1.52
	2.66	3/15 to 4/14	1.27	.90	3.56
	.62	3/1 to 5/16	2.22	1.55	2.17
	—	2/24 to 5/8	2.17	1.52	1.52
	—	2/14 to 6/4	5.70	3.99	3.99
	1.80	3/6 to 5/14	2.22	1.55	3.35
	.44	1/30 to 5/13	2.22	1.55	1.99
	2.77	2/14 to 5/13	2.22	1.55	4.32
	.27	3/1 to 5/14	2.22	1.55	1.82
	—	3/7 to 5/30	5.70	3.99	3.99
	2.21	3/11 to 5/19	2.22	1.55	3.76
	.88	2/13 to 5/14	2.22	1.55	2.43
	1.17	3/1 to 5/17	2.22	1.55	2.72
	.08	2/24 to 5/17	2.22	1.55	1.63
	2.38	4/24 to 5/13	<del>2.22</del> <sup>.51</sup>	<del>1.55</del> <sup>.34</sup>	<del>3.99</del> <sup>2.74</sup>
	0	3/1 to 5/19	2.22	1.55	1.55
	.79	3/11 to 5/24	2.22	1.55	2.34
	.37	3/12 to 5/26	3.80	2.66	3.03
	1.32	3/21 to 5/12	2.22	1.55	3.87
	.84	3/1 to 5/17	2.22	1.55	2.39
	1.25	3/5 to 5/30	5.70	3.99	5.24
	2.54	3/1 to 5/29	5.70	3.99	6.53
	.22	1/30 to 5/8	2.17	1.52	1.74
	—	3/14 to 5/30	5.70	3.99	3.99
	—	4/6 to 4/14	.90	.63	.63
J. —	—	1/6 to 4/8	—	—	—
	.98	2/23 to 5/14	2.22	1.55	2.53
	.66	2/24 to 5/21	2.22	1.55	2.21

PRIVACY ACT MATERIAL REMOVED

Name	F.B.	Residence	Bkgd	70% Bkgd	Totals
		2/14 to 5/5	2.10	1.47	1.47
		2/5 to 5/5	2.10	1.47	1.47
		3/15 to 5/15	2.22	1.55	2.49
		1/6 to 4/23	1.64	1.15	1.15

6

PRIVACY ACT MATERIAL REMOVED

Name

	F. B.	Residence	Bkgd	70% Bkgd	Total
	.56	3/19 to 4/15	1.35	.95	1.51
	.75	3/12 to 4/21	1.55	1.09	1.84
	1.03	3/12 to 5/13	2.22	1.55	2.58
	.49	4/9 to 4/26	<del>1.51</del>	1.06	<del>1.51</del>
	.32	3/21 to 4/28	1.86	1.30	1.62
	.35	3/4 to 5/9	<del>2.19</del>	1.53	1.88
NTP					
	.73	3/4 to 4/23	1.64	1.15	1.88
	.61	3/26 to 4/25	1.73	1.21	1.82
	.51	3/4 to 4/10	.62	.43	.94
	.93	3/12 to 5/13	2.22	1.55	2.48
	.22	4/10 to 5/11	2.21	1.55	1.87
	.30	4/1 to 4/26	1.78	1.25	1.55
	1.18	2/14 to 5/16	2.22	1.55	2.73
	.54	4/14 to 5/16	.92	.64	1.18
	1.47	3/14 to 5/16	2.22	1.55	3.02
		4/23 to 5/14	.59	.41	.41
	.30	<sup>NTP</sup> 3/20 to 4/25	2.22	1.55	1.85
	.0	4/24 to 5/16	.54	.38	.38
	1.24	3/12 to 5/14	2.22	1.55	2.79
	.51	3/12 to 4/8	—	—	.51
	—	4/2 to 5/9	2.19	1.53	1.53
	.34	2/21 to 4/29	<del>1.90</del>	<del>1.33</del>	<del>1.67</del>
	.72	3/16 to 4/15	<del>1.35</del>	<del>1.55</del>	<del>1.67</del>
	.69	3/12 to 5/16	2.22	1.55	2.24
	.28	4/24 to 5/16	.54	.38	.66
	.26	3/21 to 4/28	1.86	1.30	1.56
	—	3/26 to 5/9	2.19	1.53	1.53
	.91	3/12 to 5/13	2.22	1.55	2.46
	1.00	4/4 to 5/16	2.22	1.55	2.55
	1.132	3/12 to 5/14	2.22	1.55	2.87
	.52	3/16 to 4/10	.62	.43	.95
	.70	3/4 to 5/14	2.22	1.55	2.25
	1.12	2/12 to 4/28	1.86	1.30	2.42

T U 3.1.5

4.02 on F.B. ~~no follow-up~~  
3.22 on F.A. Total 7.

Greenhouse Ranger 2  
F.B. F.A. Total

3.75 2.95 6.70 1.80 8.

6.08 3.99 10.05 — 10.05

4.55 3.99 8.54 — 8.54

4.63 3.36 7.99 — 7.99

3.74 3.36 7.10 — 7.10

2.89 3.99 6.88 — 6.88

5.32 3.99 9.31 — 9.31

2.03 3.99 6.02 — 6.02

2.88 3.99 6.87 — 6.87

5.64 3.99 9.63 — 9.63

4.50 3.21 7.71 — 7.71

7.57 1.55 9.12 — 9.12

4.78 3.99 8.77 — 8.77

5.91 3.99 9.90 — 9.90

6.50 3.99 10.49 — 10.49

3.75 3.99 7.74 — 7.74

4.66 3.99 8.65 — 8.65

5.50 1.55 7.05 — 7.05

4.11 3.99 8.10 — 8.10

1.7

Brunhouse Ranger

F.B. F.A. Total

2.38 3.99 6.37 — 6.

3.77 3.99 7.78 .19 7.

4.90 1.55 6.45 — 6.

4.24 3.99 8.23 — 8.2

T U 3.1.2

5.44 3.99 9.43 — 9.4

2.18 3.99 6.17 — 6.17

5.19 3.99 9.18 — 9.18

4.17 3.78 7.95 — 7.95

Bu Med Unit #1

2.32 3.99 6.31 — 6.31

2.37 3.99 6.36 — 6.36

3.95 3.99 7.94 — 7.94

4.06 3.99 8.05 — 8.05

4.43 3.99 8.42 — 8.42

2.72 3.99 6.71

6.9

2.22 3.99 6.21 — 6.21



TU 3.1.5 (cont.)

Greenhouse Ranger  
F.B. F.A. Intl

-	6.12	3.99	10.11	-	10.
?	3.80	3.99	7.79	-	7.
	4.49	3.99	8.48	-	8.
	4.44	3.99	8.43	0	8.

TU 3.1.6

g.	3.24	3.36	6.60	-	6.
	2.15	3.99	6.14	.45	6.

# EXPOSURES RECORDED ON GREENHOUSE MONITORS

E	FILM BADGE READING	DEPARTED AToll	EXPOSURE DUE TO BACKGROUND	BACKGROUND EXPOSURE X70%	TOTAL EXPOSURES
	2550	25 May	2350	1645	4195
	2700	13 May	2200	1540	4240
	3035	13 May	2200	1540	4575
	3043	13 May	2200	1540	4583
	3270	13 May	2200	1540	4810
	4660	4 June	5620	3940	8600
	4775	31 May	5620	3940	8715
	5448	7 June	5630	3940	9388
	7570	13 May	2200	1540	9110

\* FOR Monitors leaving on 1<sup>st</sup> June or later - a dosage of .400 mr was allowed for Item Shot fallout. This is a close approximation as shown from badges that were worn from 12 May to 4 June and then developed. Records show that heavy rains around 1 June - decreased the background considerably.

D-5

Shunhouse Range Tot

F.B. F.A. Total

1.43	3.99	6.42	—	6.4
2.26	3.78	6.04	—	6.0
4.22	3.99	8.21	.08	8.2

1.1

2.06	3.99	6.05	—	6.0
2.63	3.99	6.62	—	6.62

1.5.1

5.47	2.98	8.45	1.07	9.52
5.22	3.99	9.21	3.58	12.79
3.29	3.99	7.28	1.17	8.45
5.15	1.55	6.70	1.73	8.43
5.84	3.99	9.83	.31	10.14
2.58	3.99	6.57	—	6.5
5.51	1.55	7.06	.80	7.86
4.97	3.99	8.96	—	8.96

1.5.3

2.54	3.99	6.53	—	6.53
4.88	3.99	8.87	—	8.87
2.18	3.99	6.17	—	6.17
2.45	3.99	6.44	—	6.44

Name	F. B.	Residence	Bkqd	70% Bkqd	Total
	1.40	3/1 to 5/29	5.70	3.99	5.39
	1.77	3/12 to 5/13	2.22	1.55	3.3
	—	3/1 to 5/29	5.70	3.99	3.99
	1.24	3/1 to 5/29	5.70	3.99	5.23
	.03	3/1 to 4/28	1.86	1.30	1.33
	.25	3/1 to 5/29	5.70	3.99	4.24
	.52	3/1 to 5/29	5.70	<del>3.99</del> 3.99	4.51
	.77	3/1 to 6/5	5.70	3.99	4.76
	.75	3/1 to 6/5	5.70	3.99	4.74
	1.93	2/22 to 4/30	1.94	1.36	3.29
	.31	3/1 to 6/5	5.70	3.99	4.30
	.11	3/1 to 5/29	5.70	3.99	4.10
	—	3/1 to 6/5	5.70	3.99	3.99
	1.48	3/1 to 5/29	5.70	3.99	5.47
	.37	4/15 to 5/16	.87	.61	.98
	.46	3/1 to 6/6	5.70	3.99	4.45
	—	3/1 to 5/18	2.22	1.55	1.55

NRDC VERO

Name	Film charge (r)	Fall-out (r)	Total (r)
	.56	.95	1.51
	.75	1.09	1.84
	1.03	1.55	2.58
	.49	1.06	1.55
	.32	1.30	1.62
	.35	1.53	1.88
<i>No travel performed</i>			
	.73	1.15	1.88
	.61	1.21	1.82
	.51	.43	.94
	.93	1.55	2.48
	.32	1.55	1.87
	.20	1.25	1.55
	1.18	1.55	2.73
	.54	.64	1.18
	1.47	1.55	3.02
		.41	.41
<i>No travel performed</i>			
	.30	1.55	1.85
	0	.38	.38
	1.24	1.55	2.79
	.51		.51
		1.53	1.53
	.34	1.33	1.67
	.72	.95	1.67
	.69	1.55	2.24
	.28	.38	.66
	.26	1.30	1.56
		1.53	1.53
	.91	1.55	2.46
	1.00	1.55	2.55
	1.32	1.55	2.87
	.52	.43	.95
	.70	1.55	2.25
	1.12	1.30	2.42

Oregon

Name

V.J.P.

	F. B. Expense	Kind over seen	Backgd	70% Bgd	Total
	-	4/2 to 4/8	10	7	7
	80mv	4/15 to 4/19	140	98	178
	-	4/2 to 4/21	1550	1085	1085
	-	4/2 to 4/8	10	7	7
	-	4/2 to 4/8	10	7	7
	-	5/5 to 5/10	100	70	70
	-	5/5 to 5/10	100	70	70
	-	4/13 to 4/19	285	180	180
	80mv	4/15 to 4/19	135	95	175
	-	5/5 to 5/10	100	70	70
	-	4/2 to 4/8	10	7	7
	-	4/13 to 4/19	285	180	180
	-	4/2 to 4/8	10	7	7
	95mv	4/13 to 4/19	285	180	275
	-	5/5 to 5/10	100	70	70
	40mv	4/13 to 4/19	285	180	220
	65mv	4/15 to 4/19	135	95	160
	50	2/28 to 5/7	2190	1533	1583
		5/18 to 5/27	2620	1834	1834
	-	4/5 to 4/12	1080	756	756
		5/6 to 5/10	70	49	805
	68	4/21 to 5/27	<del>2290</del> 670	<del>2303</del> 467	<del>2371</del> 537
	-	2/25 to 5/27	<del>4840</del> 2220	<del>3392</del> 1554	<del>3392</del> 1554
	-	5/2 to 5/12	210	147	147
	-	5/3 to 5/10	160	112	112
	-	5/5 to 5/10	100	70	70
	-	5/20 to 5/27	3480	2436	2436
	0	4/21 to 5/23	670	<del>469</del>	<del>469</del>
	180	3/30 to 4/11	900	630	810
	240	2/25 to 5/27	<del>4840</del> 2220	<del>3392</del> 1554	<del>3632</del> 1774
	-	5/6 to 5/12	80	56	56
	-	3/23 to 4/9	320	224	224
	m. 240	5/1 to 5/18	240	168	408

kg-TG 3.1

Org.	Name	F. B.	Residence	Bkhd	70% Bkhd	Total Exposure
Hq-T62		510	3/1 to 4/23	1635	1145	1655
		6	4/2 to 4/12	1080	756	756
		870	4/15 to 4/29	550	385	1255
		60	4/5 to 5/28	3710	2597	2657
		215	1/9 to 3/22	—	—	—
			4/5 to 5/14	2220	1554	1769
			<del>5/4 to 5/18</del>			
		235	5/6 to 5/14	90	63	298
		230	4/2 to 4/14	1290	903	1133
		160	5/3 to 5/14	180	126	286
		—	5/6 to 5/14	90	63	63
		—	3/13 to 4/18	1460	1022	1022
		—	2/28 to 4/25	1730	1211	2941
		—	5/5 to 5/27	1740	<del>1268</del>	2429
		—	3/2 to 5/15	2220	1554	<del>1295</del>
		235	3/9 to 5/27	<del>3840</del> 3840	<del>2688</del> 2688	5376
		—	4/5 to 6/4	<del>5700</del> 5700	<del>3990</del> 3990	2923
		—	1/22 to 5/21	2220	1554	<del>1554</del>
		—	3/9 to 5/27	<del>3840</del> 3840	<del>2688</del> 2688	2923
		—	2/27 to 5/27	<del>3840</del> 3840	<del>2688</del> 2688	2688
		—	3/13 to 5/31	<del>5700</del> 5700	<del>3990</del> 3990	3990
		—	2/13 to 5/27	<del>3840</del> 3840	<del>2688</del> 2688	2688
		—	1/22 to 5/31	<del>5700</del> 5700	<del>3990</del> 3990	3990
		—	2/27 to 5/27	<del>3840</del> 3840	<del>2688</del> 2688	2688
		—	2/23 to 5/25	2220	1554	1554
		—	3/14 to 5/18	2220	1554	1554
		—	3/9 to 6/20	<del>5700</del> 5700	<del>3990</del> 3990	3990
		—	3/31 to 6/8	<del>5700</del> 5700	<del>3990</del> 3990	3990
		—	3/9 to 5/23	2220	1554	1554
		—	3/19 to 5/14	2220	1554	1554
		—	1/22 to 6/20	<del>5700</del> 5700	<del>3990</del> 3990	3990
		—	2/3 to 5/29	<del>5700</del> 5700	<del>3990</del> 3990	3990
		—	3/9 to 5/20	<del>5700</del> 5700	<del>3990</del> 3990	3990
		—	3/16 to 5/31	<del>5700</del> 5700	<del>3990</del> 3990	3990

D-1



Orig.

D-1

F.B.	Residence	Kkyl	710 Kkyl	Int'l Exp.
—	3/14 to 5/6	2130	1491	1491
—	3/9 to 5/31	<del>5700</del>	<del>3990</del> 1554	<del>3990</del> 1554
—	3/9 to 6/20	<del>5700</del>	<del>3990</del> 1554	<del>3990</del> 1554
160	3/13 to 5/31	<del>5700</del>	<del>3990</del> 1554	<del>4140</del> 1554

D-2

—	1/22 to 2/10	—	—	—
—	3/12 to 4/21	1550	1085	3640
—	5/3 to 6/8	<del>3650</del> 170	<del>2555</del> 119	<del>1204</del>
75	2/24 to 6/8	<del>5700</del> 220	<del>3990</del> 1554	<del>1429</del> 1554 + 2005
—	12/8 to 4/8	10	7	2993
—	4/17 to 6/2	<del>4265</del> 785	<del>2996</del> 550	<del>859</del>
200	2/10 to 4/8	10	7	—
—	4/17 to 5/9	700	490	697
0	1/8 to 2/10	—	—	—
—	4/2 to 5/10	2200	1540	1540
0	3/17 to 5/29	<del>5700</del> 2200	<del>3990</del> 1554	<del>3990</del> 1554

D-3

0	2/25 to 5/28	<del>5420</del> 2260	<del>3794</del> 1554	<del>3794</del> 1554
—	2/5 to 6/1	<del>5700</del> 2200	<del>3990</del> 1554	<del>3990</del> 1554
—	2/6 to 6/1	<del>5700</del> 4000	<del>3990</del> 1554	<del>3990</del> 1554
1405	2/23 to 5/27	<del>4920</del> 2200	<del>3374</del> 1554	<del>4779</del> 2954
—	3/3 to 5/27	<del>4920</del> 2200	<del>3374</del> 1554	<del>3374</del> 1554
—	4/5 to 4/21	1550	1085	1085
—	2/27 to 5/5	2100	1470	1470
—	5/21 to 6/6	<del>4150</del> 670	<del>2905</del> 464	<del>724</del> 464
—	2/17 to 5/25	2220	1554	1554
—	12/5 to 3/1	—	—	—
—	3/17 to 5/29	<del>5700</del> 2200	<del>3990</del> 1554	<del>3990</del> 1554
—	1/9 to 1/21	—	—	—
—	2/23 to 5/27	<del>4840</del> 2220	<del>3388</del> 1554	<del>3388</del> 1554
—	2/27 to 6/1	<del>5700</del> 2200	<del>3990</del> 1554	<del>3990</del> 1554
—	3/27 to 5/6	2180	1526	1526
—	2/13 to 5/27	<del>4540</del> 2200	<del>3388</del> 1554	<del>3388</del> 1554
—	1/22 to 5/27	<del>4840</del> 2200	<del>3388</del> 1554	<del>3388</del> 1554
—	1/12 to 1/26	<del>5700</del>	<del>3990</del>	<del>3990</del>
—	3/2 to 5/29	<del>2220</del>	<del>1554</del>	<del>1554</del>



Orig.  
D-4

F.B.	Revised	Bkpt	70% Bkpt	Total Est
720	12/9 to 6/6	5700 <del>2220</del>	3990 1554	2580 <del>2274</del>
—	12/9 to 6/6	5700 <del>2220</del>	3990 1554	3990 1554
0	12/24 to 5/24	2220	1554	1554
—	12/24 to 6/18	5700 <del>2220</del>	3990 1554	3990 1554
0	12/3 to 6/2	5700 <del>2220</del>	3990 1554	3990 1554
—	12/13 to 6/4	5700 <del>2220</del>	3990 1554	3990 1554
80	1/12 to 1/26	—	—	—
—	3/9 to 6/3	5700 <del>2220</del>	3990 1554	1624 1554
—	4/13 to 6/4	4500 <del>1020</del>	3150 714	714 31
—	10/15 to 2/4	—	—	—
—	2/27 to 5/27	4840 <del>2220</del>	3388 1554	3388 1554
0	3/21 to 5/31	5700 <del>2220</del>	3990 1554	3990 1554
0	12/3 to 5/29	5700 <del>2220</del>	3990 1554	3990 1554
<del>3/27 to 6/20</del>				
—	4/27 to 6/20	5700 <del>2220</del>	3990 1554	3990 1554

D-5

210	3/13 to 5/26	3880 <del>5700</del> 2220	2660 <del>3590</del> 1554	2870 1764 1554 420
—	5/3 to 5/12	160	112	112
—	5/5 to 5/12	110	77	77
875	3/13 to 5/27	4840 <del>2220</del>	3388 1554	4263 2429
—	5/5 to 5/12	110	77	77
—	4/2 to 4/12	1085	760	760
—	4/12 to 4/24	600	420	420

Hq-3.1.1

2270	3/13 to 5/26	3820 <del>2220</del>	2674 1554	4944 3824
1320	1/9 to 2/3	—	—	—
—	3/4 to 5/29	5700 <del>2220</del>	3990 1554	5310 2594
395	3/29 to 5/26	3820 <del>2220</del>	2674 1554	3069 1949
933	3/13 to 5/21	2220	1554	2487
2145	3/20 to 5/17	2220	1554	3700
2430	1/24 to 5/29	5700 <del>2220</del>	3990 1554	6420 3984
920	12/9 to ?	—	—	—
—	3/13 to 5/17	2220	1554	2474
2262	2/28 to 5/28	5420 <del>2220</del>	3794 1554	3816 6056
4215	3/29 to 5/29	5700 <del>2220</del>	3990 1554	5769 820

Org.  
Hg-3.1.1

Name

F.B.

Residence

Bkgd

70% Bkgd

Total Exp ✓

880	4/13 to 4/24	485	340	1220
—	4/2 to 4/10	620	434	434
1875	4/13 to 4/24	485	340	2215
—	4/2 to 4/10	620	434	434
—	4/2 to 4/18	1460	1022	1022
950	4/15 to 5/13	870	609	1559
—	5/1 to 5/13	240	168	168
—	4/2 to 4/18	1460	1022	1022
270	4/2 to 4/10	620	434	704
115	4/10 to 4/24	1065	746	861
360	4/15 to 5/14	870	609	969
740	4/24 to 5/26	<del>535</del> 2135	<del>375</del> 1495	<del>1115</del> 2235
—	5/3 to 5/12	175	123	123
730	4/12 to 4/23	435	305	1040
—	5/3 to 5/10	160	112	112
—	5/4 to 5/14	140	98	98
4090	4/2 to 4/14	1280	876	4966

1.5.1

5470	2/26 to 4/8	10 4265	7 2984	8463
	4/17 to 6/3	<del>385</del>	<del>550</del>	<del>6029</del>
3015	1/21 to 2/3	—	—	—
	3/1 to 5/16	2220	1554	4569
5220	2/26 to 3/8	—	—	—
	3/17 to 6/11	5700 <del>2220</del>	3990 1554	9210 <del>6794</del>
3290	3/10 to 5/29	5700 <del>2220</del>	3990 1554	4844 7280
850	2/26 to 5/28	5420 <del>2220</del>	3794 1554	2404 4644
1455	2/26 to 5/1	1980	1386	2841
—	2/5 to 6/2	5700 <del>2220</del>	3990 1554	+554 3990
5145	2/28 to 5/24	2220	1554	6700
—	3/6 to 3/20	—	—	—
—	2/3 to 4/13	1200	840	—
	5/2 to 5/29	3650 170	2555 119	959 3395
8. —	3/6 to 4/19	1485	1040	1040
5840	3/9 to 5/29	5700 <del>2220</del>	3990 1554	7394 9830

PRIVACY ACT MATERIAL REMOVED

Org.	Name	F.B. Number	Revised	70% Reval	Total Exp.	
1.5.1		2580	2/5 to 6/2	5700 <del>2220</del>	3990 1554	4134 6570
	v.	5510	2/28 to 5/24	2220	1554	7064
		4965	2/5 to 6/3	5700 <del>2220</del>	3990 1554	<del>6579</del> 8955
1.6		60	3/12 to 5/28	5420 <del>2220</del>	3794 1554	<del>3854</del> <del>2054</del> 1614
		—	3/25 to 5/18	2220	1554	1554
		415	3/18 to 4/29	1900	1330	1745
		0	3/9 to 4/21	1550	1085	1085
		365	3/9 to 4/27	1820	1274	1639
		210	3/9 to 4/27	1820	1274	1484
		130	3/4 to 4/27	1820	1274	1404
		900	5/22 to 5/25	—	—	900
	640	5/22 to 5/25	—	—	<del>640</del>	
	—	5/22 to 5/25	—	—	—	
	1925	3/12 to 5/27	4840 <del>2220</del>	3388 1554	5313 3479	
	2375	3/4 to 5/31	5700 <del>2220</del>	3990 1554	6365 3929	
	<del>1415</del>	<del>4/15 to 5/25</del>				
	300	4/5 to 4/8	10	7	307	
t.	2600	1/17 to 5/26	3820 <del>2220</del>	2674 1554	5274 <del>4154</del>	
2.	300	4/16 to 4/21	150	105	405	
	2733	4/1 to 5/26	3820 <del>2220</del>	2674 1554	5407 <del>4157</del>	
	70	5/6 to 5/9	45	32	102	
	1695	3/12 to 5/27	4840 <del>2220</del>	3388 1554	5083 3249	
	880	4/5 to ?				
		5/22 to 5/25	—	—	—	
	360	4/5 to 4/8	10	7	367	
e.	1075	3/12 to 5/26	3820 <del>2220</del>	2674 1554	3749 <del>2629</del>	
	1670	3/12 to 5/26	3820 <del>2220</del>	2674 1554	4344 <del>3224</del>	
	2185	3/4 to 5/25	2220	1554	3639	
	3785	3/4 to 5/31	5700 <del>2220</del>	3990 1554	5339 7775	
'w.	225	4/16 to 4/21	150	105	330	
	—	3/18 to 3/29	—	—	—	

Orig	Name	F. B.	Residence	Bkgh	70% Bkgh	Total Exp.
1.7		600	5/4 to 5/19	145	102	702
				<del>5700</del>	3990	5798
		1808	3/4 to 5/31	<del>2220</del>	<del>1554</del>	<del>3362</del>
		400	4/5 to 4/8	10	7	407
		50	5/6 to 5/9	60	42	92
		130	4/16 to 4/21	150	105	235
			3/12 to 5/28	<del>5420</del>	<del>3794</del>	<del>1554</del>
		<del>5705</del>	3/4 to 5/25	2220	1554	6.45
				<del>5420</del>	<del>3794</del>	<del>7259</del>
		1540	3/12 to 5/28	<del>2220</del>	<del>1554</del>	<del>3094</del>
				<del>5420</del>	<del>3794</del>	<del>5234</del>
		70	5/6 to 5/9	60	42	112
			3/12 to 5/26	<del>3820</del>	<del>2674</del>	<del>2674</del>
				<del>2220</del>	<del>1554</del>	<del>1554</del>
			3/18 to 3/29			
		4240	3/12 to 5/31	<del>5700</del>	<del>3990</del>	<del>5774</del>
				<del>2220</del>	<del>1554</del>	<del>5774</del>
		520	4/16 to 4/21	150	105	625
				<del>4840</del>	<del>3388</del>	<del>3668</del>
		280	3/17 to 5/27	<del>2220</del>	<del>1554</del>	<del>1834</del>
			5/17 to 6/30	3480	2436	2436
		50	4/29 to 5/29	<del>3800</del>	<del>2660</del>	<del>2710</del>
				<del>320</del>	<del>224</del>	<del>271</del>
			2/1 to 2/15			
		70	5/3 to 5/11	160	112	182
		0	3/17 to 5/26	<del>3820</del>	<del>2674</del>	<del>2674</del>
				<del>2220</del>	<del>1554</del>	<del>1554</del>
			5/17 to 6/30	3480	<del>2660</del>	<del>2660</del>
				<del>3440</del>	<del>2660</del>	<del>2660</del>
			5/3 to 5/11	160	112	112
		0	3/17 to 5/13	2220	1554	1554
			5/5 to 6/15	<del>3600</del>	<del>2520</del>	<del>2520</del>
				<del>120</del>	<del>84</del>	<del>84</del>
			2/5 to (?)			
			5/3 to 5/13	170	119	289
			4/13 to 5/28	<del>4220</del>	<del>2954</del>	<del>714</del>
				<del>7020</del>	<del>714</del>	<del>714</del>
			5/17 to 6/30	3480	2660	2660
			3/6 to 5/25	2220	1554	1554
			3/17 to 5/21	2220	1554	1554
			3/17 to 5/13	2220	1554	1554
			1/5 to 4/8	10	7	7
			5/17 to 6/5	3480	2660	2660
			4/29 to 5/28	<del>320</del>	<del>2464</del>	<del>334</del>
				<del>3520</del>	<del>224</del>	<del>2574</del>
			3/15 to 5/27	<del>4840</del>	<del>3388</del>	<del>2388</del>
				<del>2220</del>	<del>1554</del>	<del>1554</del>

✓

Org.  
1.10

Name

	F.B.	Residence	Bkqd	70% Bkqd	Total Exp.
	—	? to 5/26			
	305	3/17 to 5/26	<del>3120</del> 2220	2184 1554	2488 <del>1854</del>
	2200	5/18 to 5/29	3420	2394	4594 <del>2200</del>
	1205	5/3 to 5/16	170	119	1324
	670	3/17 to 5/28	5260	3682	4352
	225	3/25 to 5/26	3140	2198	2423
	—	12/28 to 5/21	2220	1554	1554
	50	5/3 to 5/11	160	112	162
	75	3/17 to 5/26	3140	2198	2273
	—	5/18 to 5/29	3420	2394	2394

3.1.2

	<del>5440</del>	<del>1/11 to 5/27</del>			
	1550	1/9 to 5/16	2220	1554	3104
	—	(?) to 5/11	<del>4580</del>	<del>3206</del>	<del>2206</del>
	1655	1/9 to 5/27	4580	3206	4861
	<del>2180</del>	<del>1/15 to 6/1</del>			
	1020	3/26 to 5/13	2210	1547	2567
	150	3/12 to 5/5	2100	1470	1620
	918	3/14 to 5/17	2220	1554	2472
	2080	3/12 to 5/27	4580	3206	5286
	2290	3/12 to 5/19	2220	1554	3844
	1865	3/12 to 5/27	4580	3206	5071

3.1.3

	0	2/13 to 5/14	2220	1554	1554
	430	3/23 to 4/13	1200	840	1270
	—	3/1 to 5/14	2220	1554	1554
	300	3/13 to 5/16	2220	1554	1854
	185	3/13 to 5/12	2210	1547	1732

Proj. 5

	990	2/28 to 5/19	2220	1554	2544 <del>1554</del>
--	-----	--------------	------	------	-------------------------

3.1.4

	<del>246</del>	<del>3/10 to 5/14</del>			
	—	3/31 to 4/23	1640	1148	1148
	—	3/10 to 4/8	10	7	7
	—	5/5 to 5/25	120	84	84

Org.	Name	F.B.	Residence	Bkgh	10% Bkgh	Total Exp.
3.1.4	—	5/5 to 5/27	2380	1736	1736	
	0	3/9 to 5/11	2210	1547	1547	
	*	4/15 to 5/11	860	602	602	
	0	4/15 to 5/11	860	602	602	
	—	5/2 to 5/14	210	147	<del>147</del>	
	515	3/10 to 5/27	4580	3206	3721	
	190	3/24 to 5/27	4580	3206	<del>3376</del>	
	-	5/5 to 5/27	2380	1736	1736	
	—	3/24 to 5/25	2220	1554	1554	
	—	4/7 to 4/23	1640	1148	1148	
	—	3/31 to 4/10	620	434	434	
	—	5/5 to 5/26	1040	728	728	

3.1.5

	3750	4/13 to —			
	6080	3/28 to 5/29	5700	3990	10070
	820	3/28 to 4/29	1900	1330	2150
	4550	3/12 to 5/29	5700	3990	8540
	1914	3/4 to 5/16	2220	1554	3468
	4500	1/9 to 5/27	4580	3206	7706
	2860	4/13 to 5/17	1020	714	3574
	2900	5/23 to 6/30	<del>5700</del> <sup>3.50</sup>	<del>3990</del> <sup>2.45</sup>	<del>6890</del> <sup>5.35</sup>
	3.1000	4/11 to 5/17	1320	924	1924
	3885	4/13 to 5/17	1020	714	4599
	4435	3/28 to 5/30	5700	3990	8425

3.1.6

	—	3/12 to 6/1	5700	3990	3990
	—	3/12 to 5/13	1200	840	840
	—	3/12 to 6/1	5700	3990	3990
	1660	3/14 to 6/4	5700	3990	5650
	1020	3/12 to 5/13	2210	1547	2567
	365	3/14 to 6/4	5700	3990	4355
	95	4/22 to 5/13	610	427	522
	2150	3/14 to 6/4	5700	3990	6140
	100	3/12 to 5/11	2210	1547	1647
	—	3/4 to 5/3	2050	1435	1435
	145	(?) to 5/10			

PRIVACY ACT MATERIAL REMOVED

ag	Name	F.B.	Residence	Bkgsd	70% Bkgsd	Total Es
		—	3/14 to 4/25	1730	1211	1211
		340	1/9 to 5/28	5420	3794	4134
		—	5/16 to 5/28	3200	2240	2240
		180	2/27 to 3/5	—	—	512
			4/16 to 4/28	460	332	<del>332</del>
		1525	12/17 to 6/30	5700	3990	5515
		—	10/28 to 3/25	—	—	—
		—	1/9 to 2/15	—	—	—
		—	1/9 to 2/15	—	—	—
		—	5/26 to 6/15	1890	1323	1323
		—	1/9 to 4/5	—	—	—
		—	5/6 to (?)	3580	2506	2506
		215	1/9 to 3/22	—	—	—
			4/5 to 5/14	2220	1554	1769

PRIVACY ACT MATERIAL REMOVED

231