

~~CONFIDENTIAL~~

HEADQUARTERS
Joint Task Force Seven
ATC 437
San Francisco, California

9 July 1952

SUBJECT: Radiation Intensity Readings on Rongelap Atoll

TO: Director
Division of Biology and Medicine
U. S. Atomic Energy Commission
Washington 25, D. C.
ATTENTION: Dr. Gordon R. Dunning

Forwarded herewith are graphs of radiation intensity readings at Rongelap Atoll. These data supplement previous communications to you from this command.

FOR THE COMMANDER:

4 Incl
1-4. Graphs

Copy Furnished USA

BEST COPY AVAILABLE

16 374 DEFENSE NUCLEAR AGENCY

16 6141524 WNRC

Box 14

RAD. EXPOSURES RECEIVED ON
POPULATED ATOLLS AS A RESULT OF Op.
REDWING

CLASSIFICATION CANCELLED *

BY AUTHORITY OF DOE/OC

J. Diaz 9/4/90

ULTRA DNA SWISHER TD

DOE ES-50, 5-14-90

~~CONFIDENTIAL~~

WHEN SEPARATED FROM INCLOSURE THIS DOCUMENT IS UNCLASSIFIED

NO DOE CLASS. INFO COORDINATE

J. Diaz 12/12/89

~~CONFIDENTIAL~~

original
for file

RONGELAP ATOLL

(0.022 cur/hr)

Background (0.022 cur/hr)

5/12/58 thru 5/13/58

less background

5/12/58 thru 5/13/58

(All readings plotted less background 4/12/58 thru 5/13/58)

Total Dose Accumulated 193 cur (Dose not incl. BG)

3/6/58

1.3
1.2
1.1
1.0
.9
.8
.7
.6
.5
.4
.3
.2
.1
0.0
5/10/58

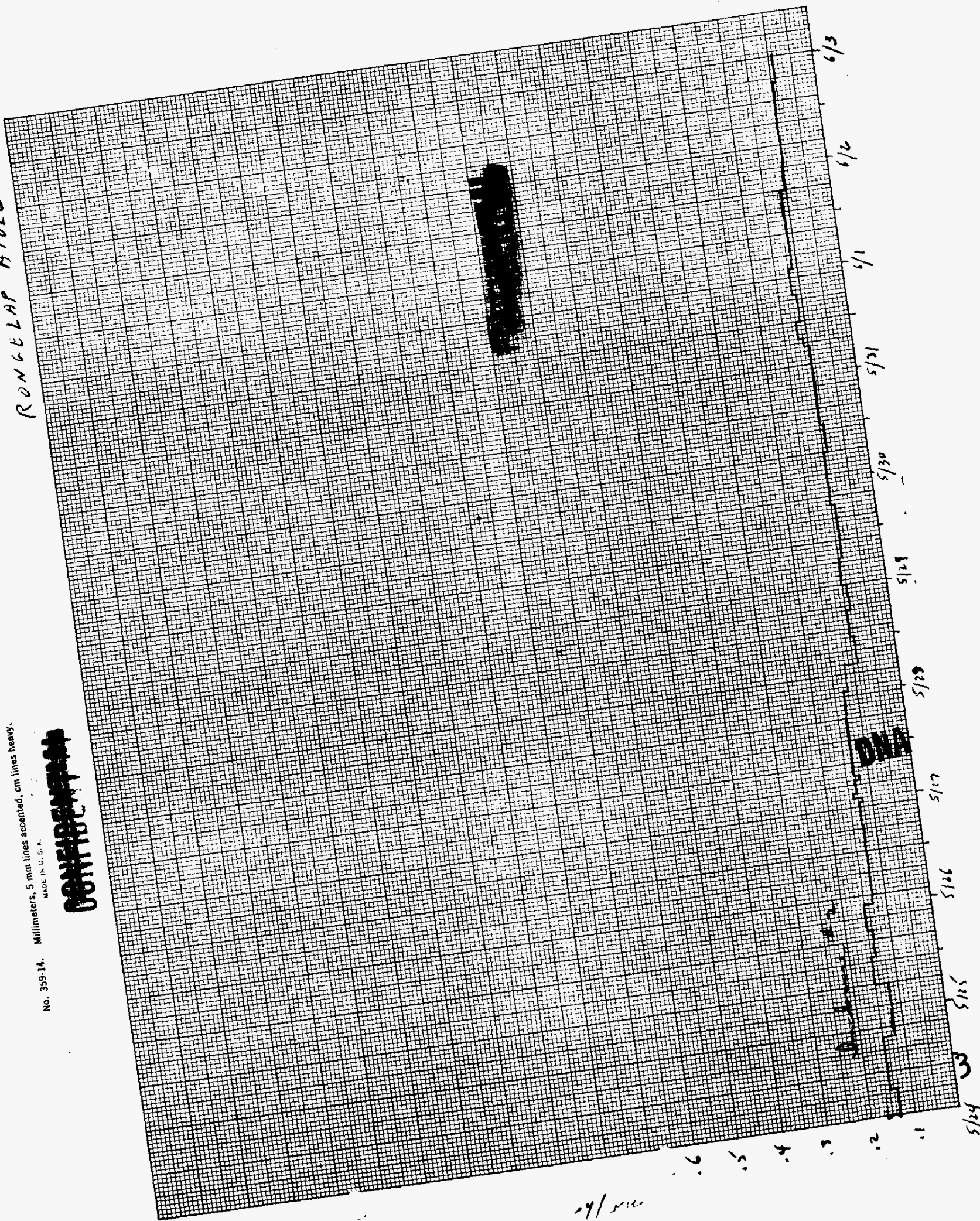


KEUFFEL & ESSER CO.

RONGELAP ATOLL

No. 359-14. Millimeters, 5 mm lines accented, cm lines heavy.
MADE IN U. S. A.

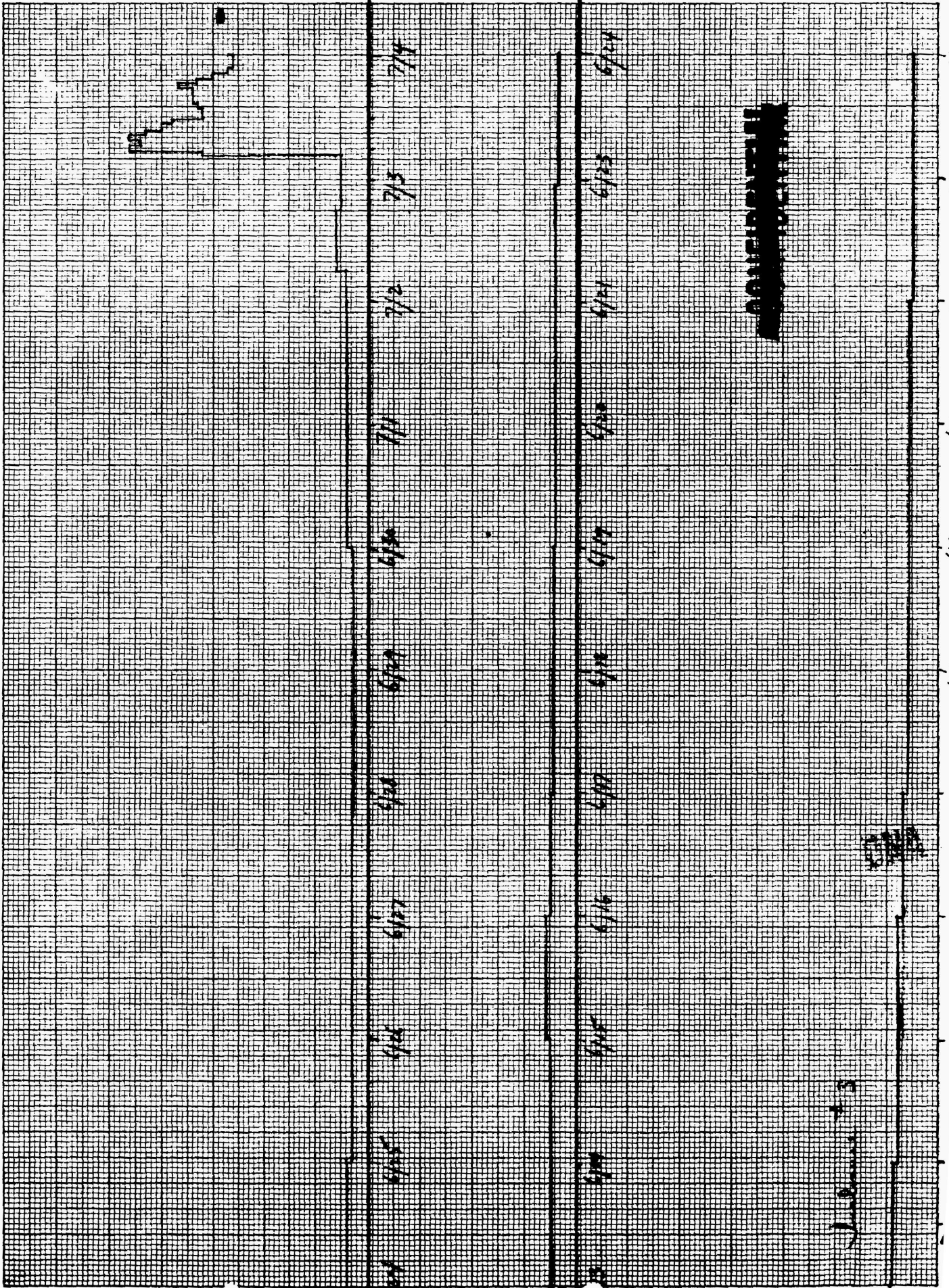
~~CONFIDENTIAL~~



29/210

~~CONFIDENTIAL~~

RONGELAP ATOLL



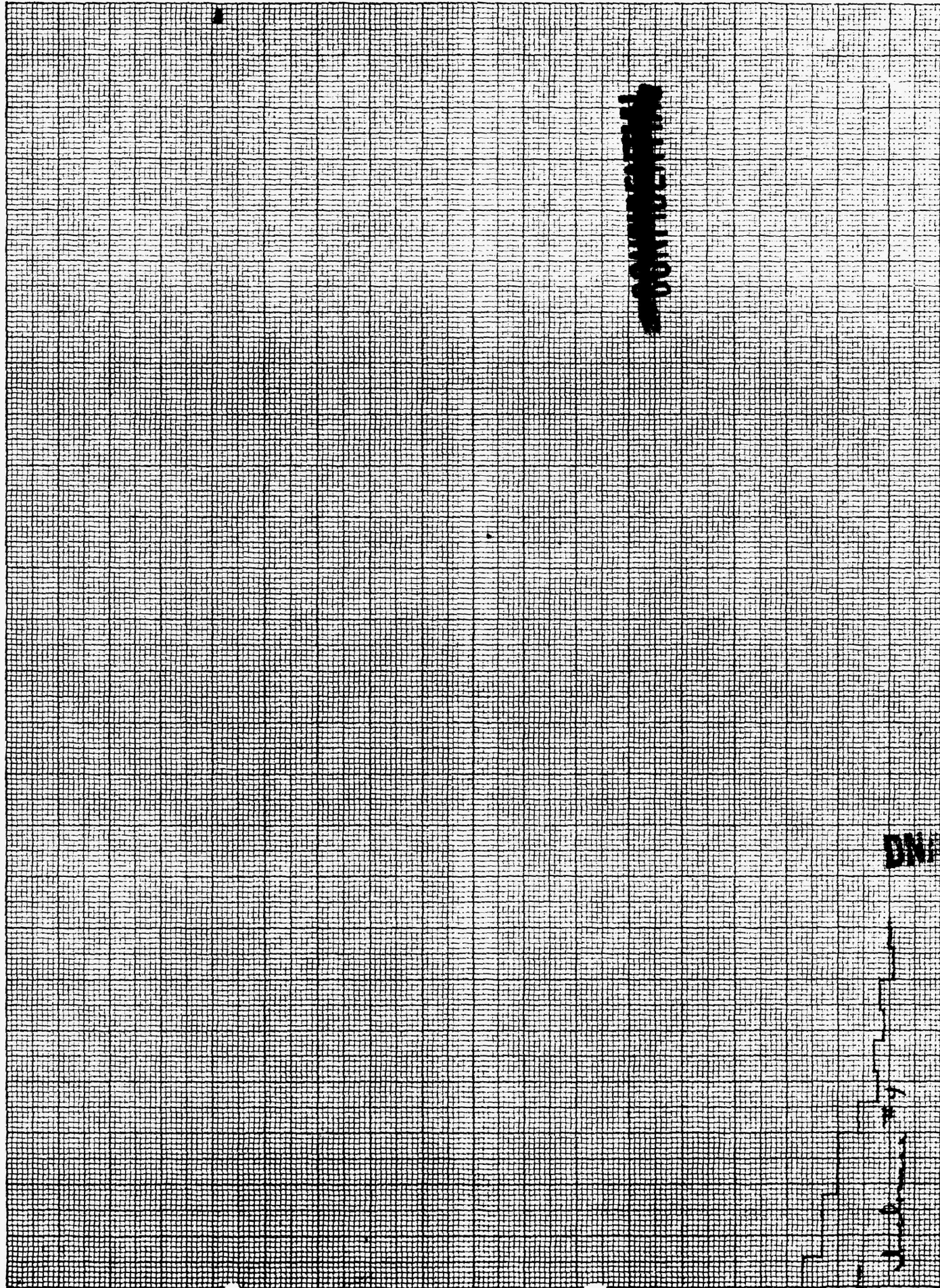
No. 359-14. Millimeters, 5 mm lines accented, cm lines heavy.

CONFIDENTIAL

MADE IN U.S.A.

KEUFFEL & ESSER CO.

RONGELAP ATOLL



CONFIDENTIAL

.4
.3
.2
.1
BC

7/4 5 7/5 7/6 7/7 7/8