

~~CONFIDENTIAL~~

HEADQUARTERS  
Joint Task Force Seven  
ATC 437  
San Francisco, California

9 July 1952

SUBJECT: Radiation Intensity Readings on Engelep Atoll

TO: Director  
Division of Biology and Medicine  
U. S. Atomic Energy Commission  
Washington 25, D. C.  
ATTENTION: Dr. Gordon W. Dunning

Forwarded herewith are graphs of radiation intensity readings at Engelep Atoll. These data supplement previous communications to you from this command.

FOR THE COMMANDER:

4 Incl  
1-4. Graphs

Copy Furnished USA

DISSEMINATION AVAILABLE

AG 374 DEFENSE NUCLEAR AGENCY

1. WNRG

6141524 Box 14

RAD. EXPOSURES RECEIVED ON POPULATED ATOLLS AS A RESULT OF Op. REDWING

*Handwritten:* RUSP file

CLASSIFICATION CANCELLED \*  
BY AUTHORITY OF DOE/OC  
*J. Diaz* 9/14/90  
ULTRA DNA SWISHER TD  
DOE ES-50, 5-14-90

~~CONFIDENTIAL~~

WHEN SEPARATED FROM INCLOSURE - THIS DOCUMENT IS UNCLASSIFIED

NO DOE CLASS. INFO COORDINATE  
*J. Diaz* 12/12/89

~~CONFIDENTIAL~~

original  
for file

RUNGELAP ATOLL

9/12/58 thru 5/12/59 Background (0.022 mR/hr)

(All readings plotted less background)

Total Dose Accumulated 4/12/58 thru

7/6/58 193 mR (Dose not incl. BG)

1.3

1.2

1.1

1.0

.9

.8

.7

.6

.5

.4

.3

.2

.1

0

5/20/58

5/11

5/10

5/17

5/18

5/19

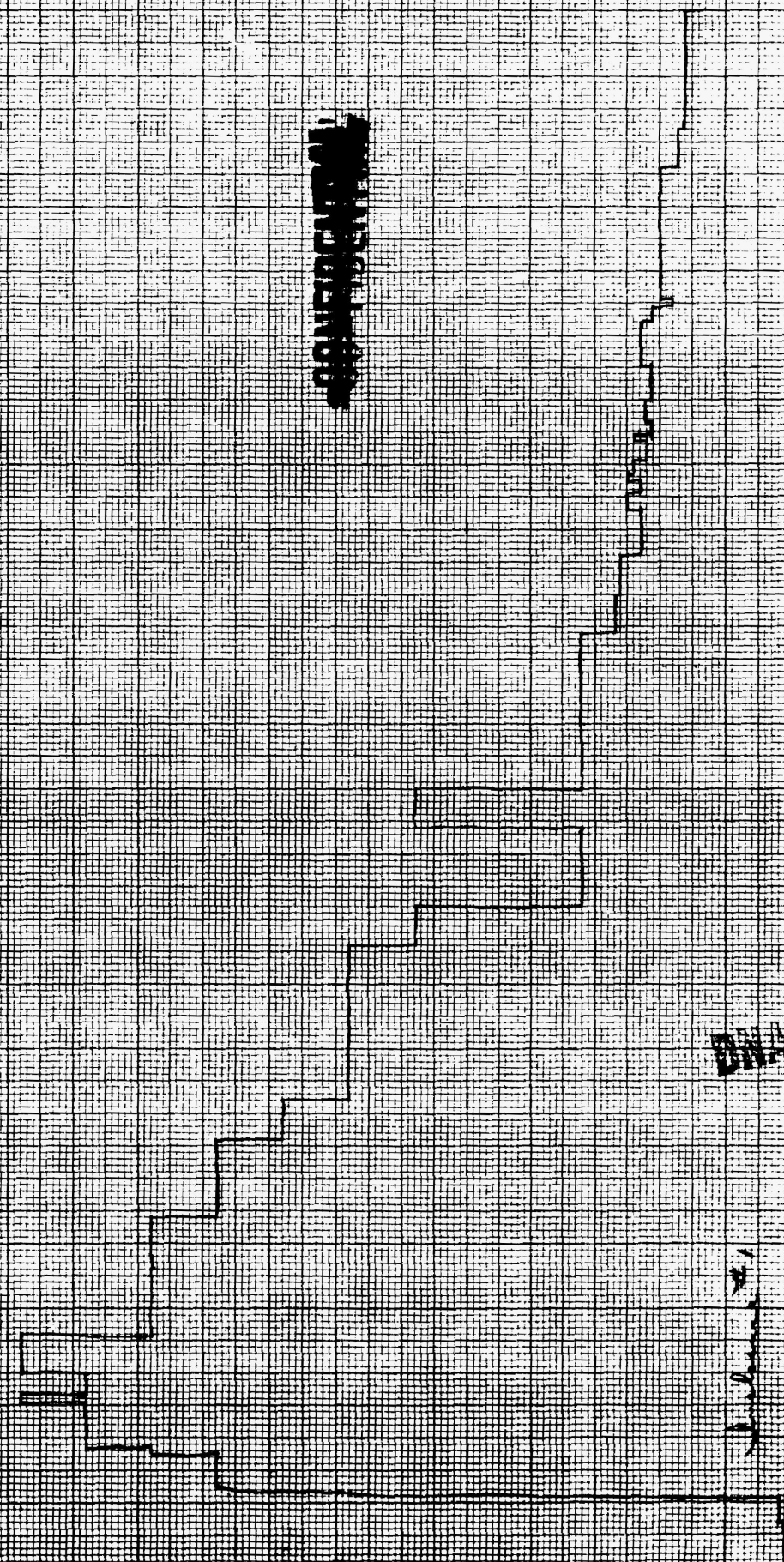
5/20

5/21

5/22

5/23

5/24



~~CONFIDENTIAL~~

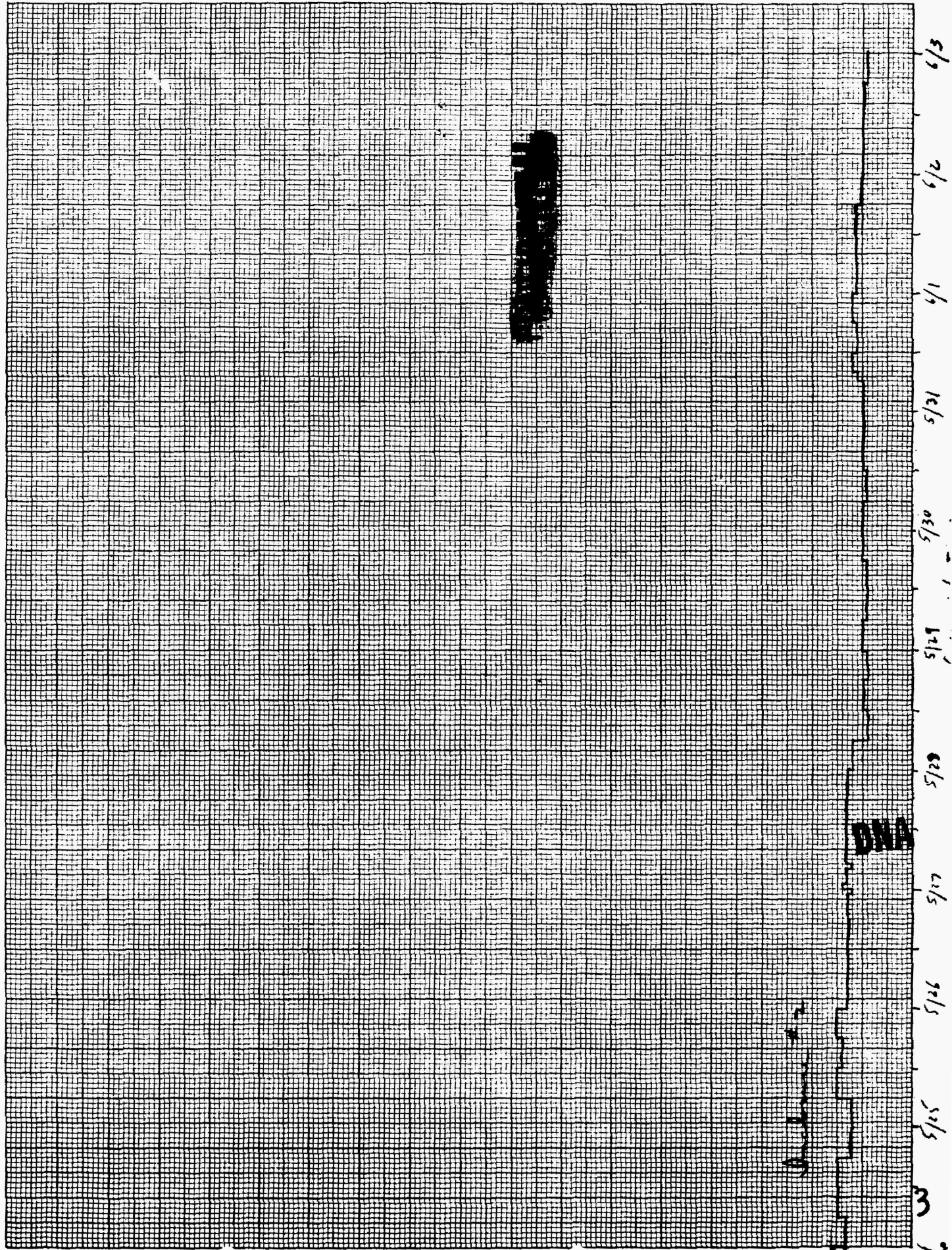
~~CONFIDENTIAL~~

No. 359-14. Millimeters, 5 mm lines accented, cm lines heavy.  
MADE IN U. S. A.

KEUFFEL & ESSER CO.

~~CONFIDENTIAL~~

RONGELAP ATOLL



29/200

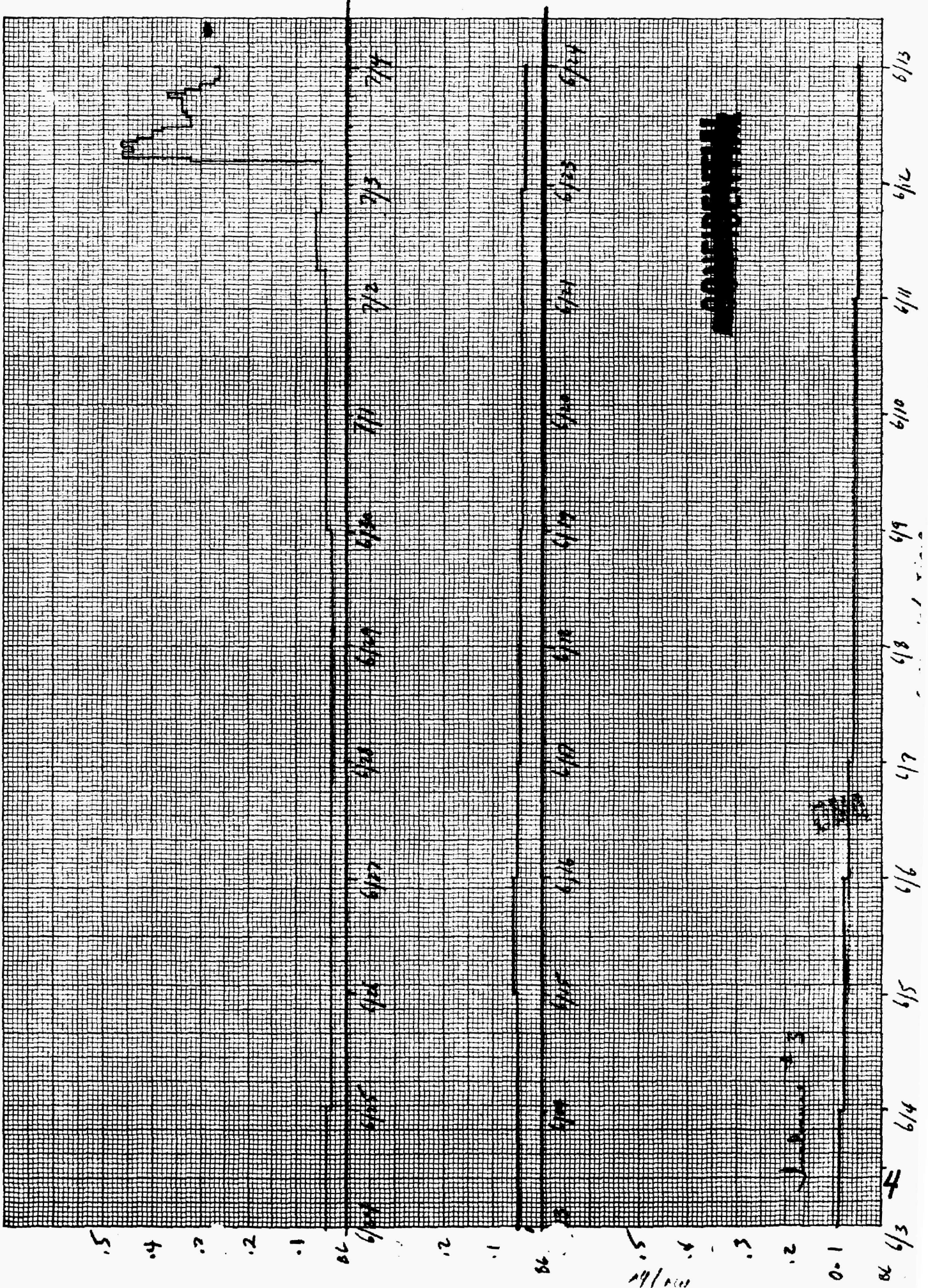
5/24  
5/25  
5/26  
5/27  
5/28  
5/29  
5/30  
5/31  
6/1  
6/2  
6/3

No. 359-14. Millimeters, 5 mm lines accented, cm lines heavy.

KEUFFEL & ESSER CO.

**CONFIDENTIAL**

RONGELAP ATOLL



KEUFFEL & ESSER CO.

RONGELAP ATOLL

No. 359-14. Millimeters, 5 mm lines accented, cm lines heavy.

**CONFIDENTIAL**

**CONFIDENTIAL**

**CONFIDENTIAL**

718

.4  
.3  
.2  
.1