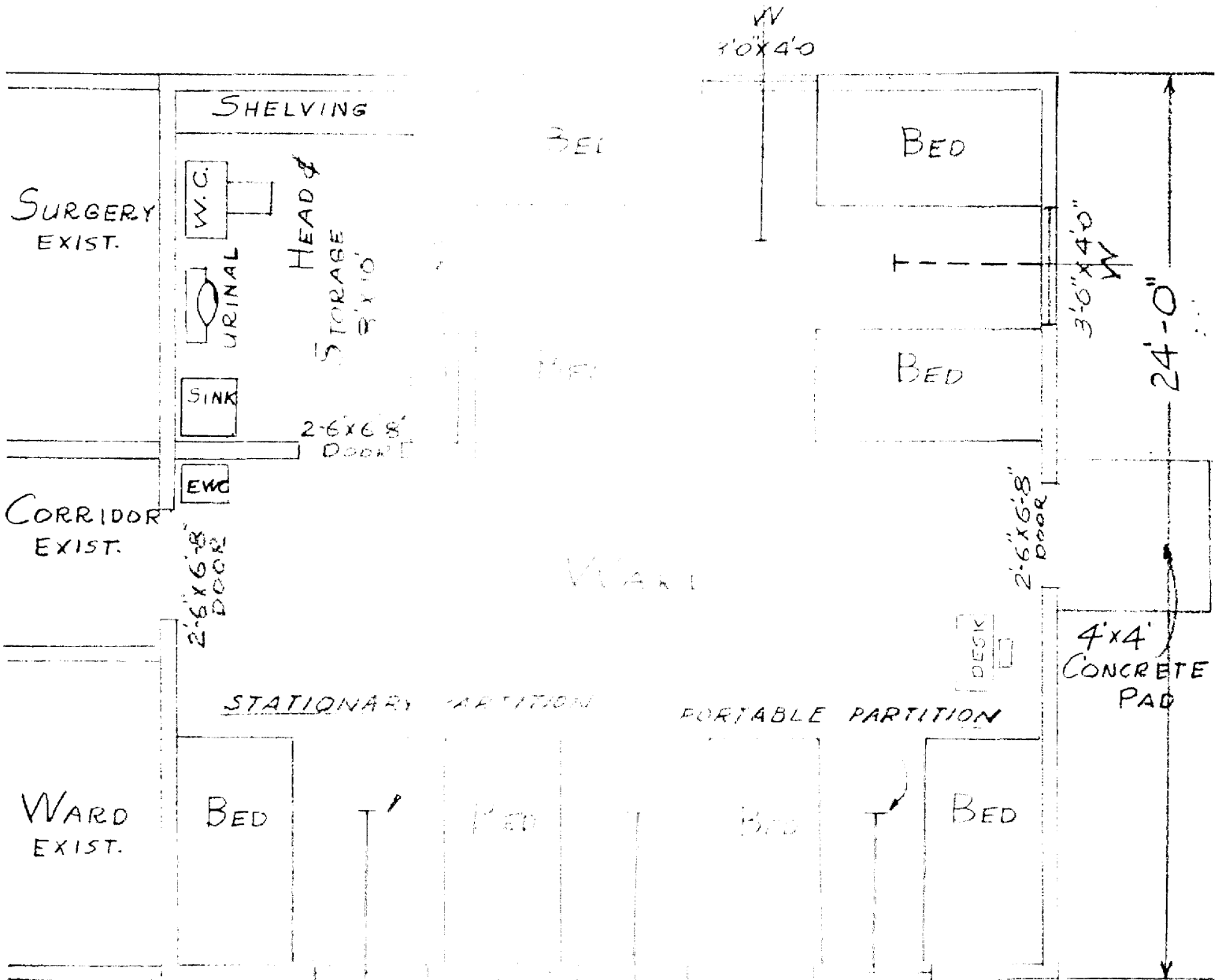


R



24'-0"

2'-6" x 6'-8" DOOR

2'-6" x 6'-8" DOOR

3'-6" x 4'-0" W

4'-0" x 4'-0" W

4'-0" x 4'-0" W

4'-0" x 4'-0" W

ADDITION TO INFIRMARY			JOB No.
BLD'G. No 24			SHEET
DRAWN BY JMC	DATE 3-20-53	APPROVAL	MISC-44
TIMES & NARVEN, ENGR			